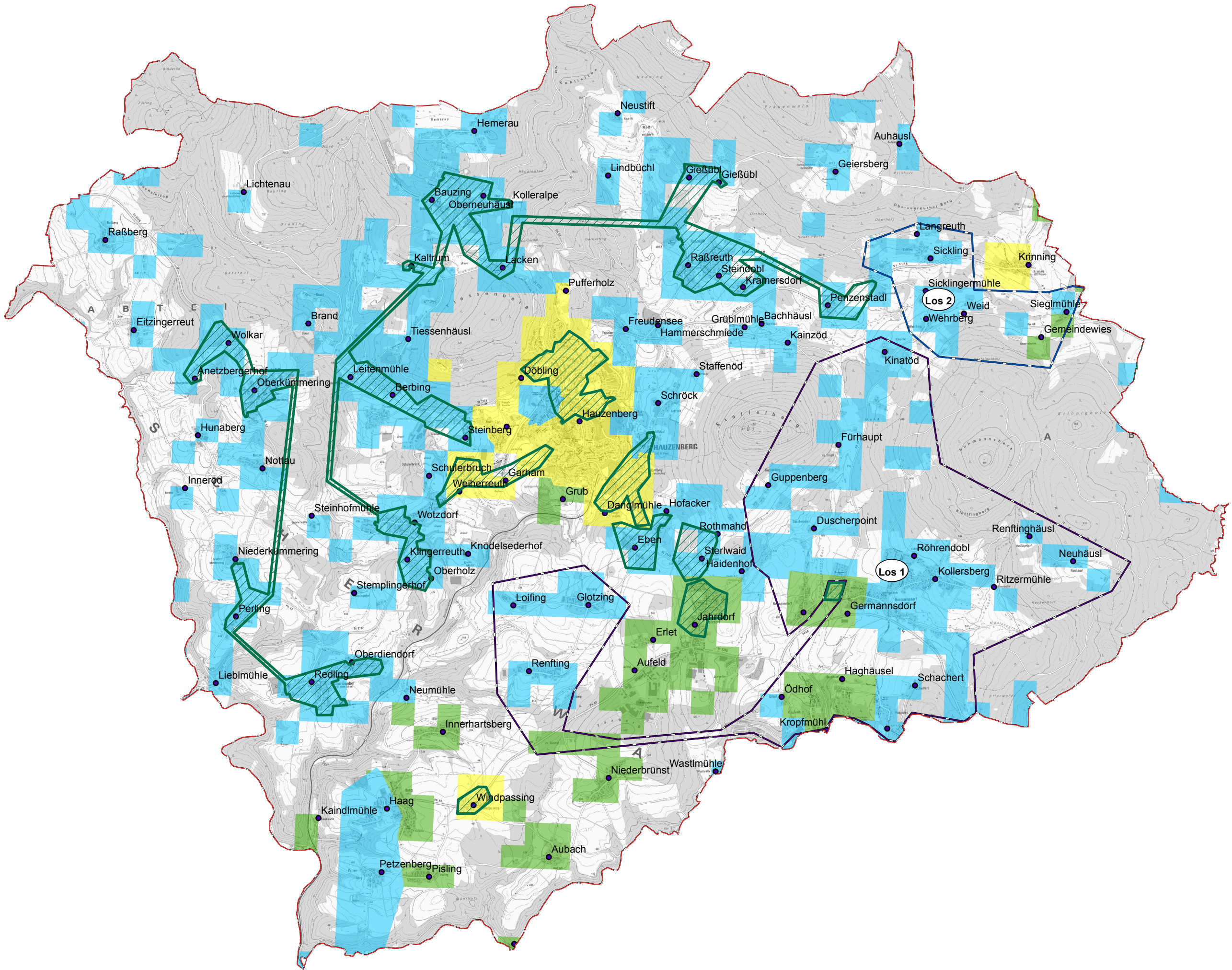










# Gemeinde Hauzenberg



## Legende

-  vorl. Erschließungsgebiet II  
Los 1
-  vorl. Erschließungsgebiet III  
Los 2
-  Ausbau gefördert oder  
eigenwirtschaftlich
-  Gemeindegrenze
-  Ortsteile

## Versorgung

-  ≤ 15 Mbit/s Down / 1 Mbit/s Up
-  16 Mbit/s Down / 1 Mbit/s Up
-  ≥ 30 Mbit/s Down / 2 Mbit/s Up



**LANDKREIS  
PASSAU**

**Koordinierungsstelle  
Landratsamt Passau  
Domplatz 11  
94032 Passau**