

GE
o
KS 15,00m
GRZ 0,80
KD

GE
o
H=18,00m
GRZ 0,80
SC od FD

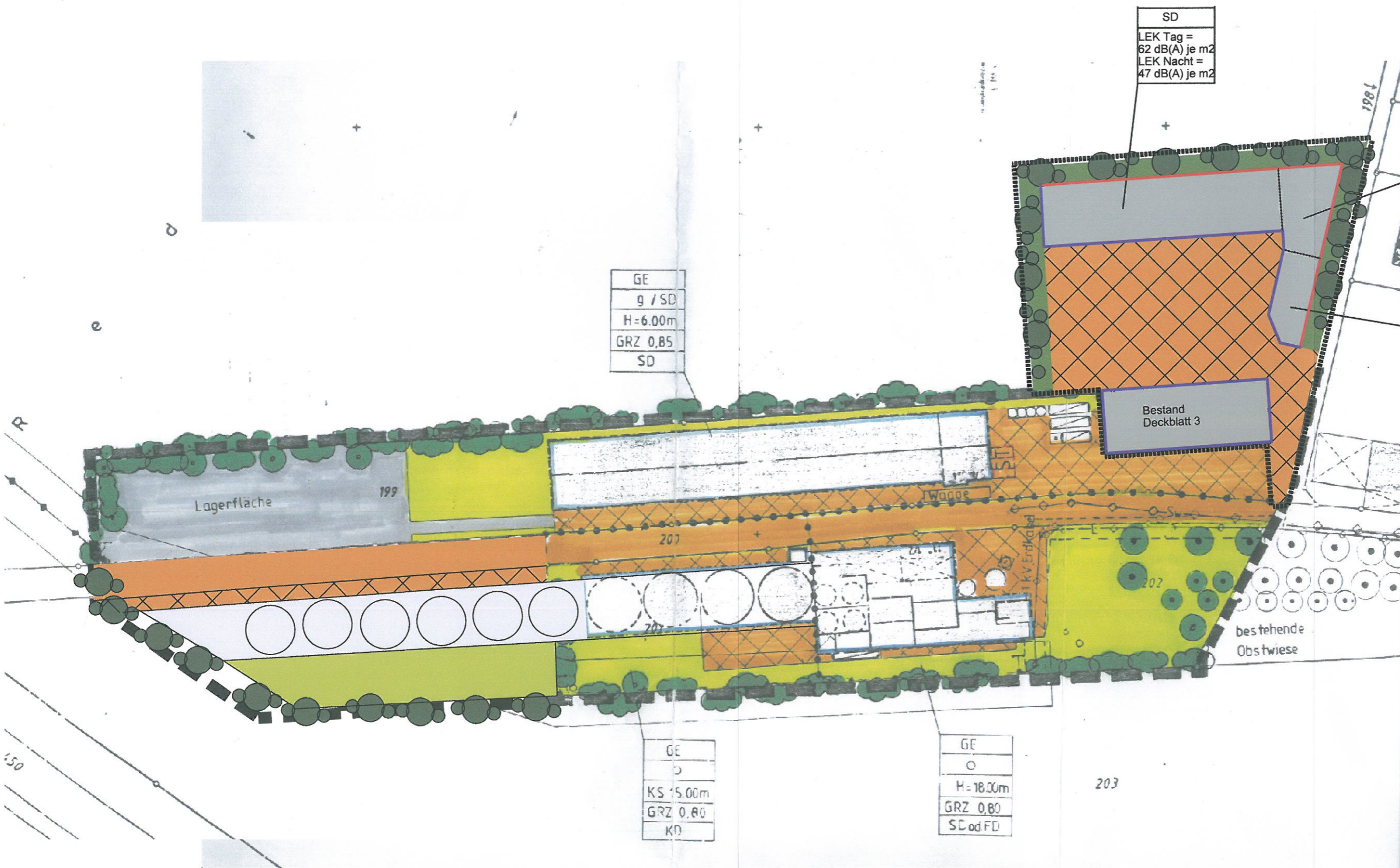
203

GE
g / SD
H=6,00m
GRZ 0,85
SD

SD
LEK Tag = 62 dB(A) je m2
LEK Nacht = 47 dB(A) je m2

WH = 5,0m
GRZ 0,85
SD
FH mind. 7,50 m max. 10,0 m
LEK Tag = 60 dB(A) je m2
LEK Nacht = 45 dB(A) je m2

eGE
o
WH westl. = 5,0m östl. <= 5,0 m
GRZ 0,85
PD
LEK Tag = 60 dB(A) je m2
LEK Nacht = 45 dB(A) je m2



GE
o
KS 15,00m
GRZ 0,80
KD

GE
o
H=18,00m
GRZ 0,80
SC od FD

203