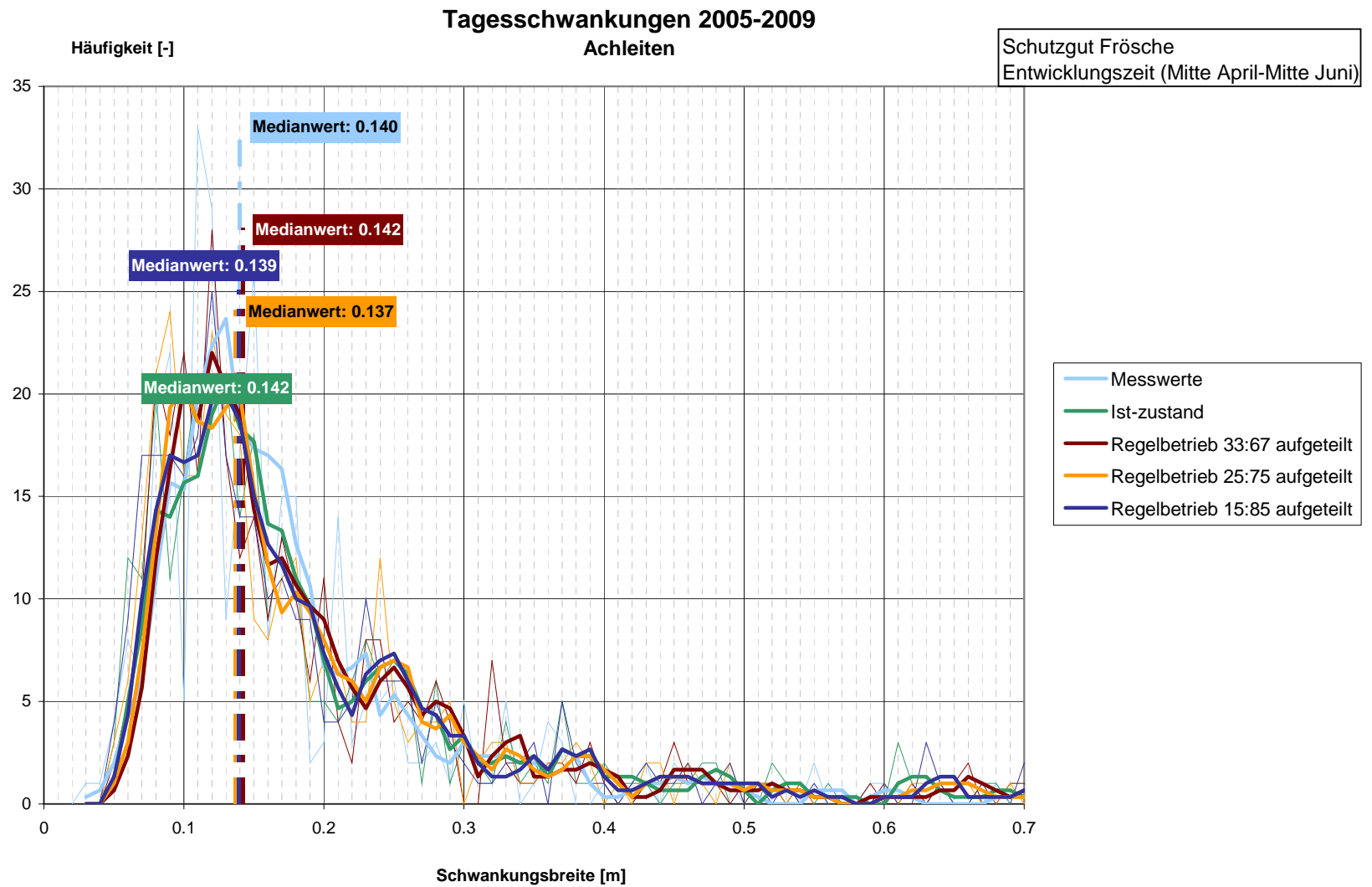
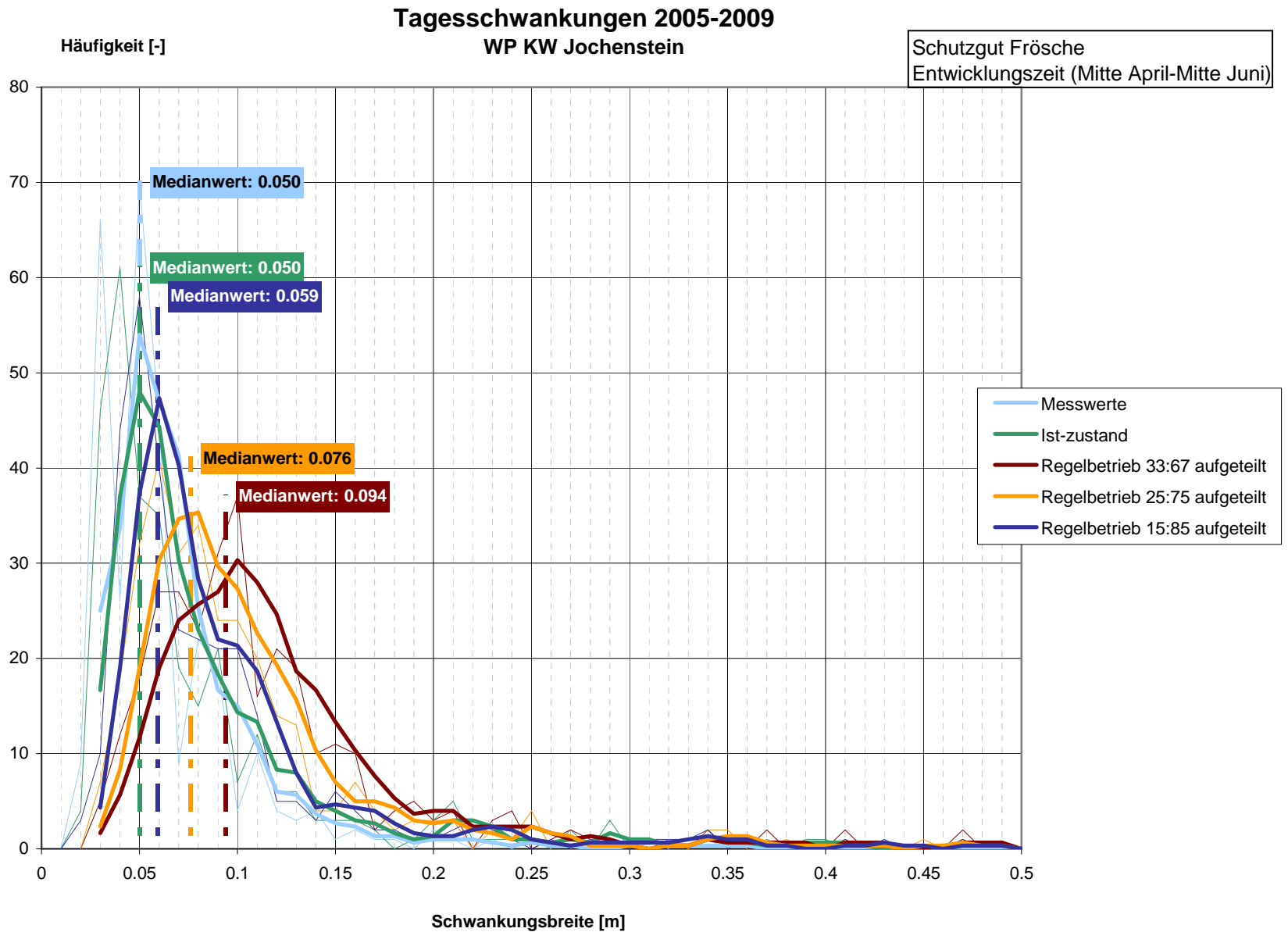


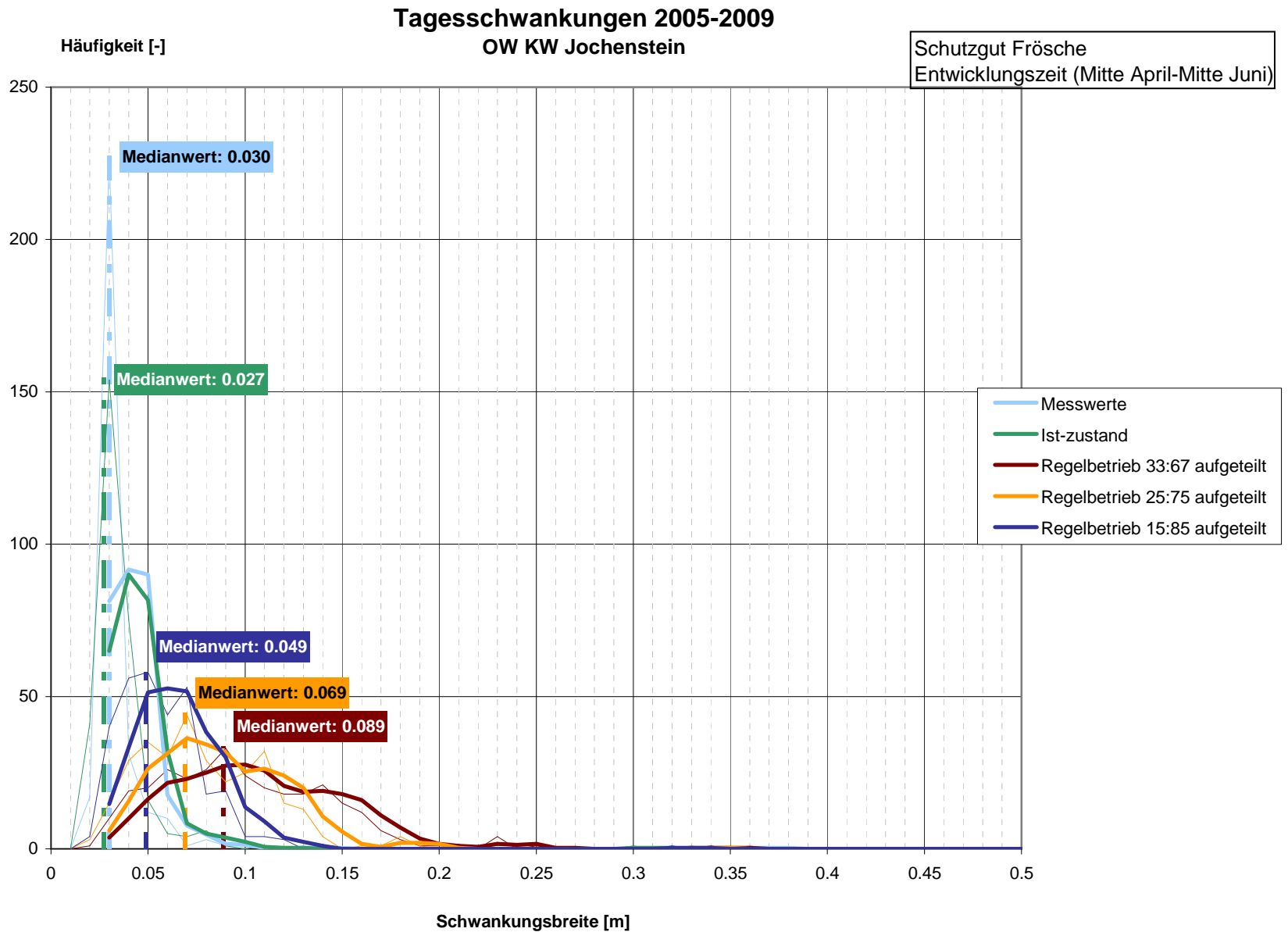
**DONAU-
KRAFTWERK
JOCHENSTEIN**
AKTIENGESELLSCHAFT

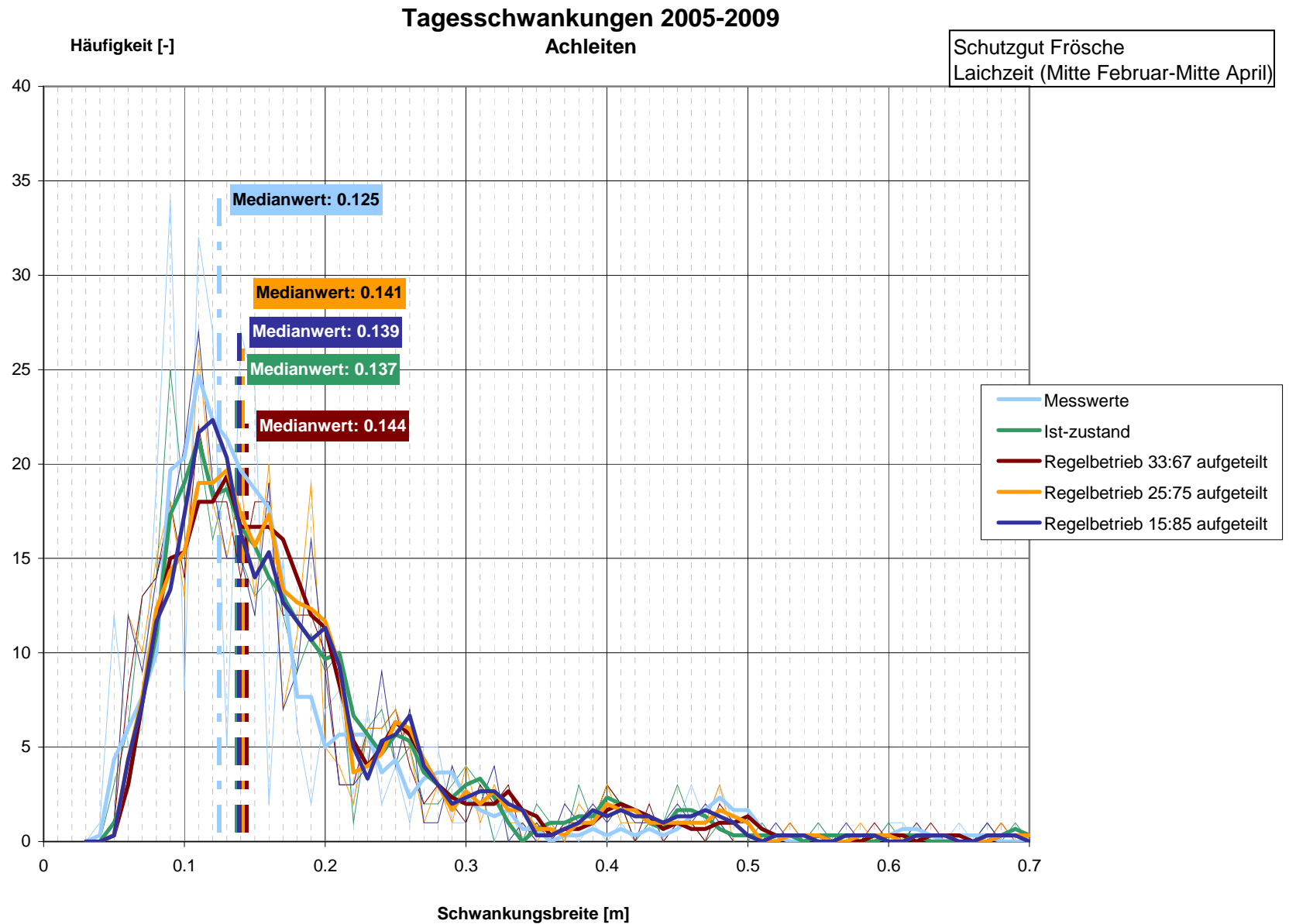
An abstract, artistic representation of liquid movement. The image features vibrant green and blue translucent waves flowing across a white background. Numerous small, clear bubbles are scattered throughout the lower portion of the composition, giving it a sense of motion and depth. The overall effect is clean, modern, and refreshing.

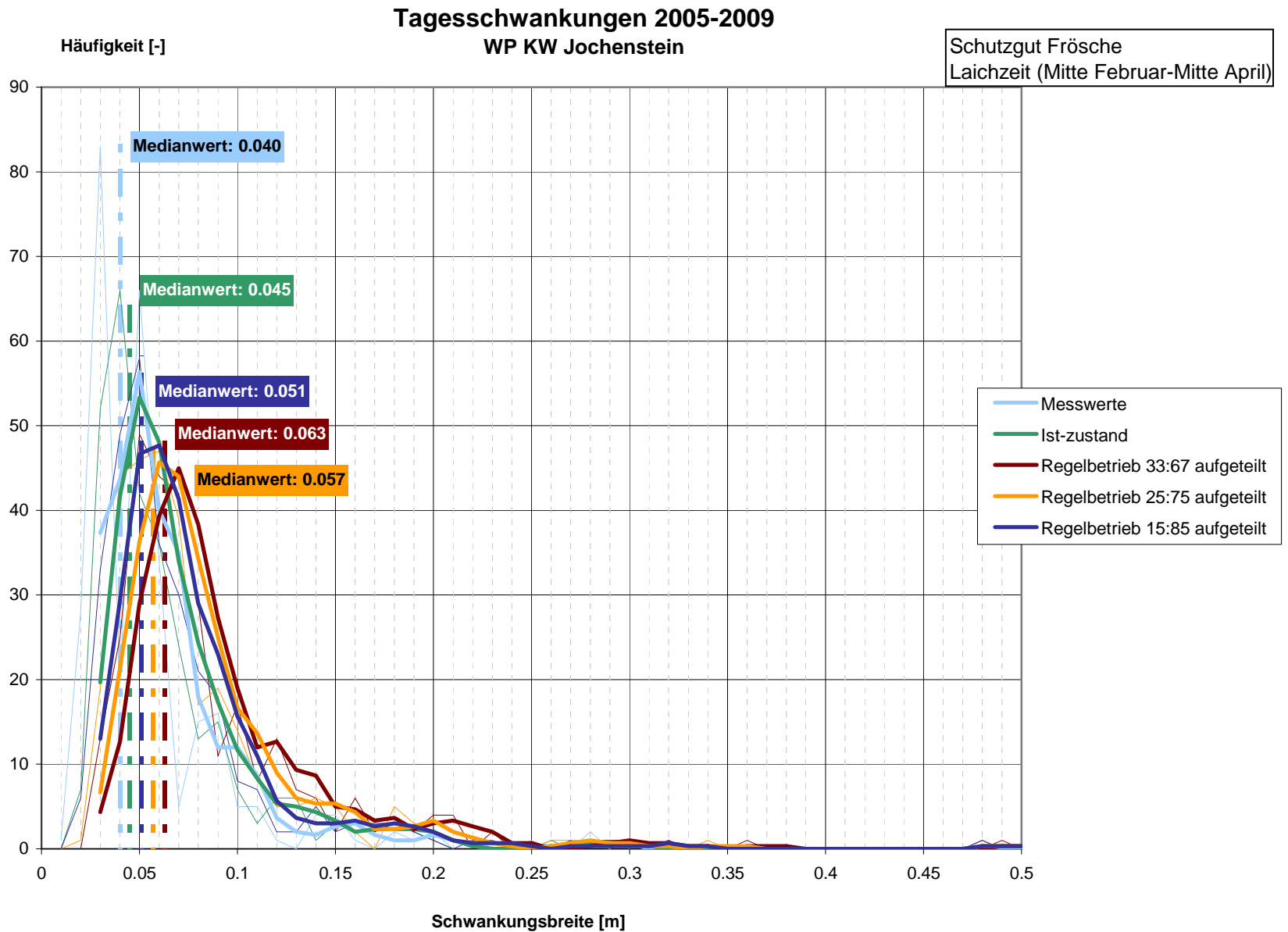
[illegible]

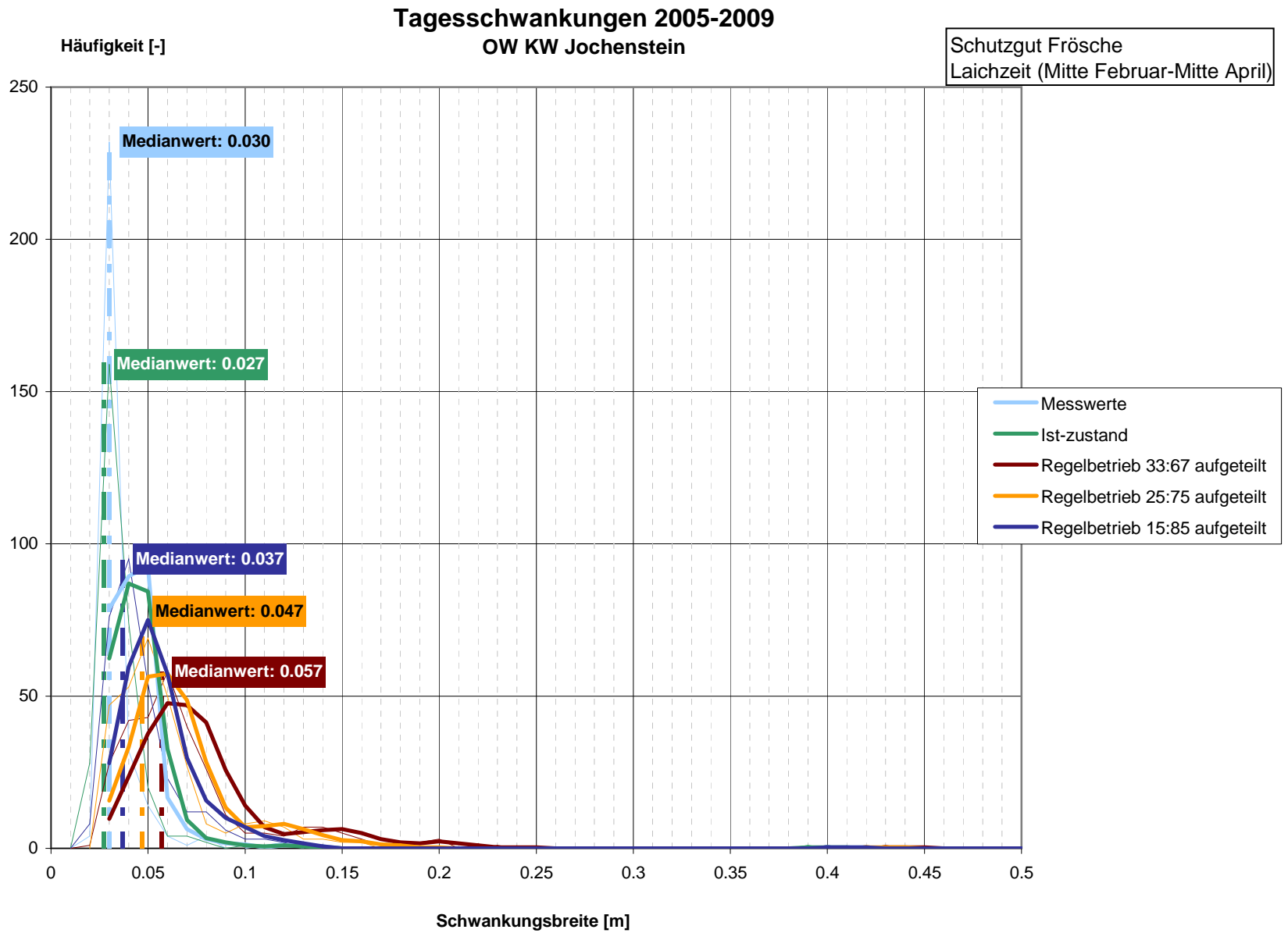


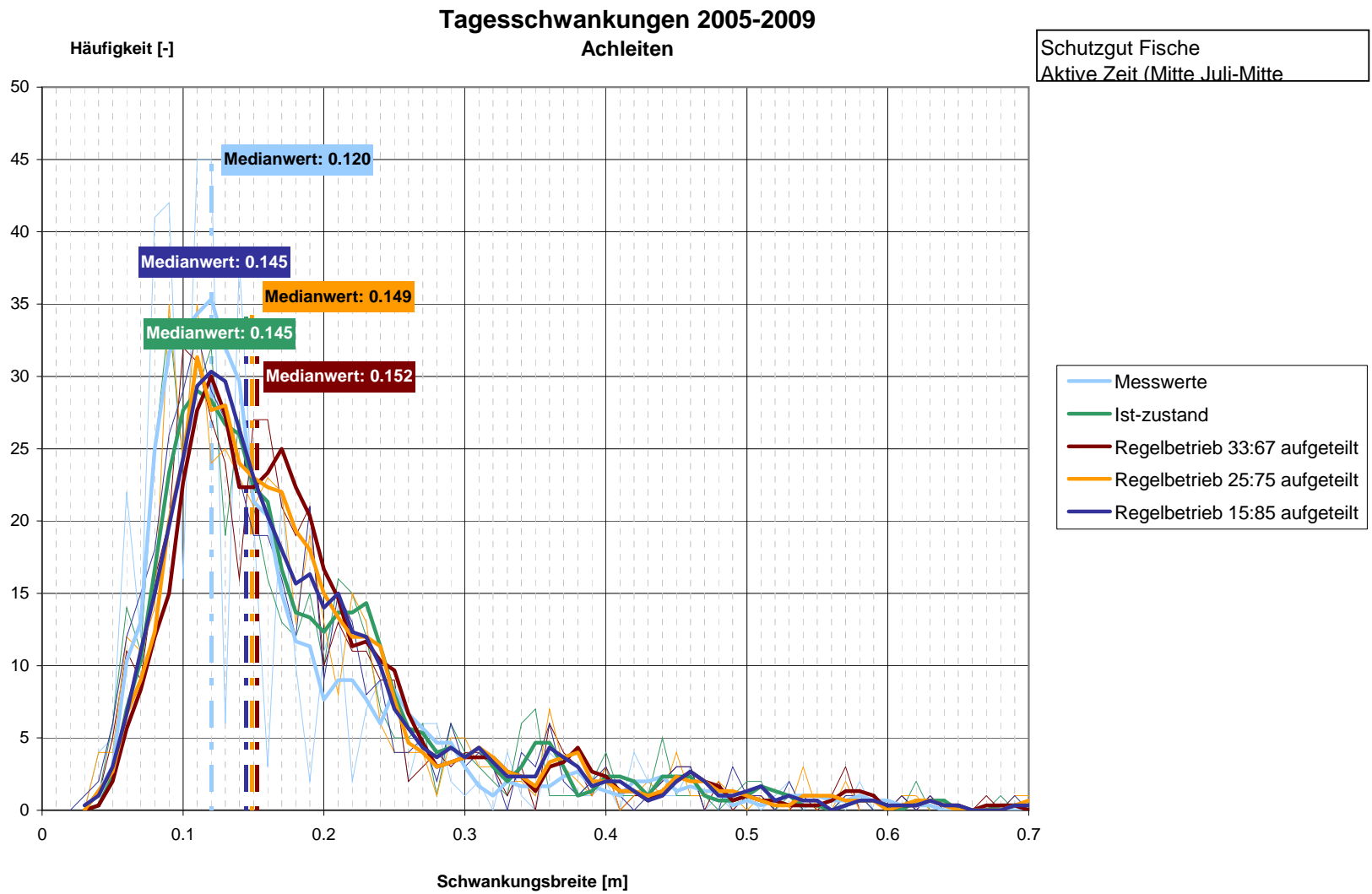


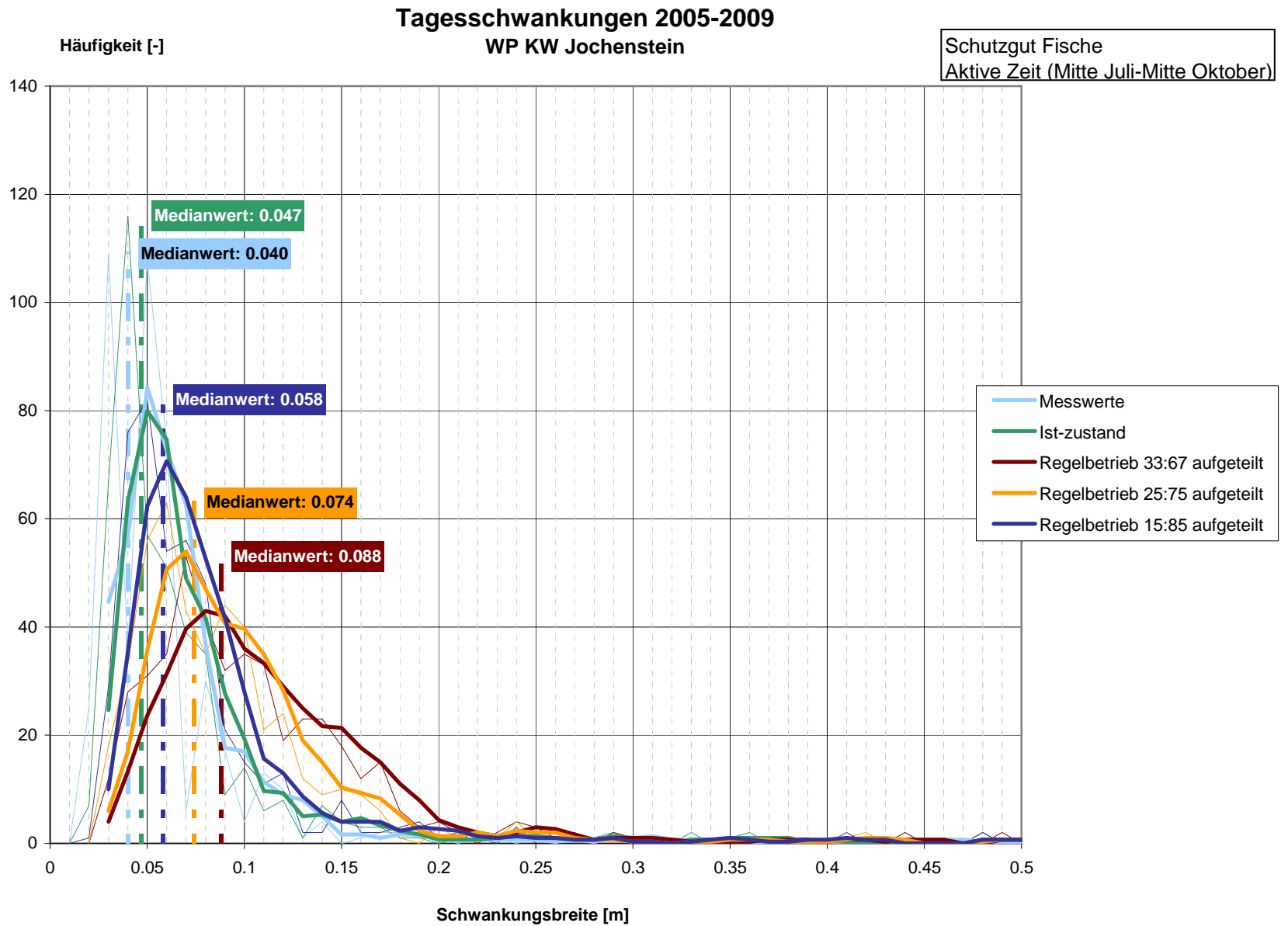


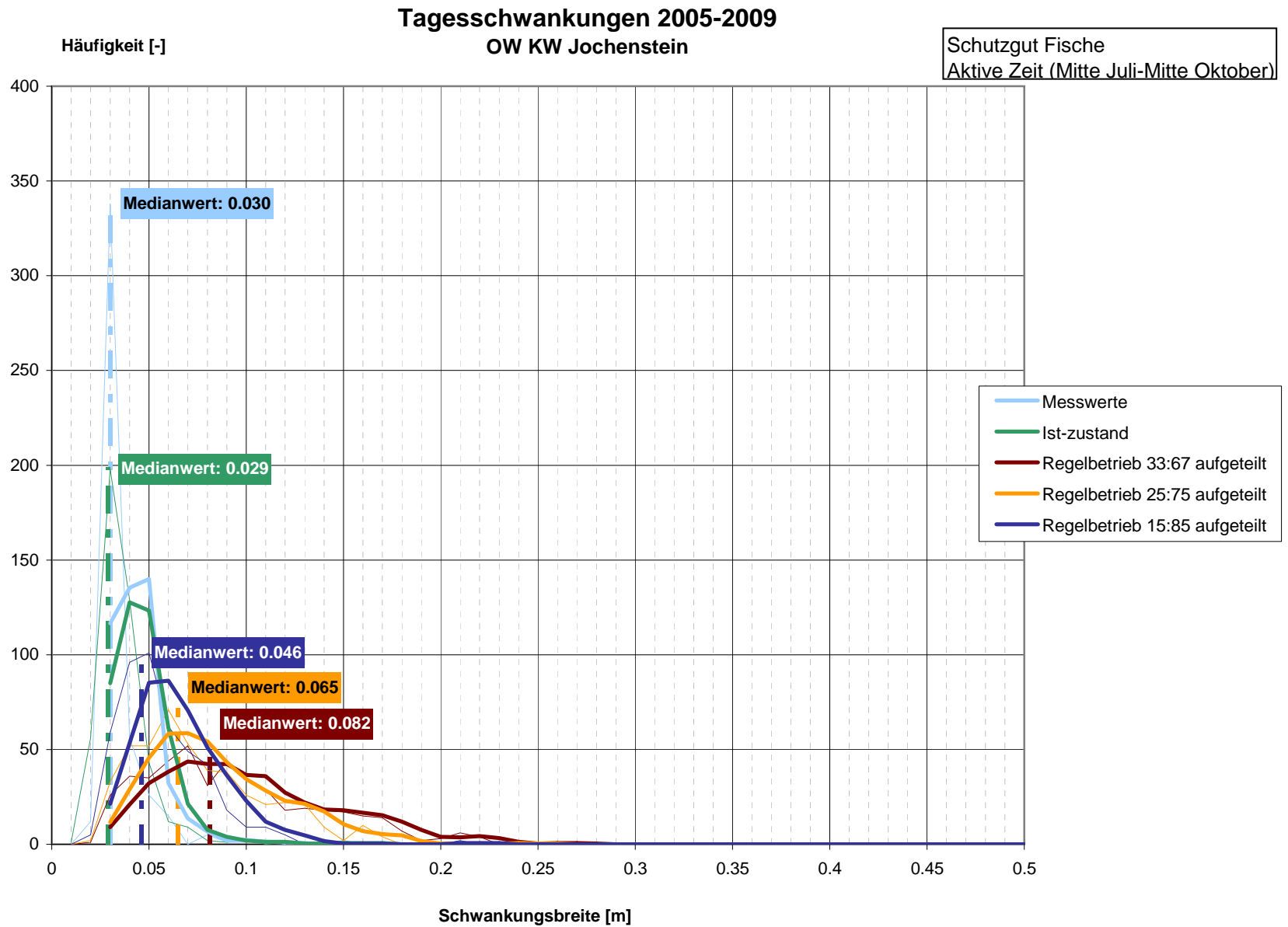


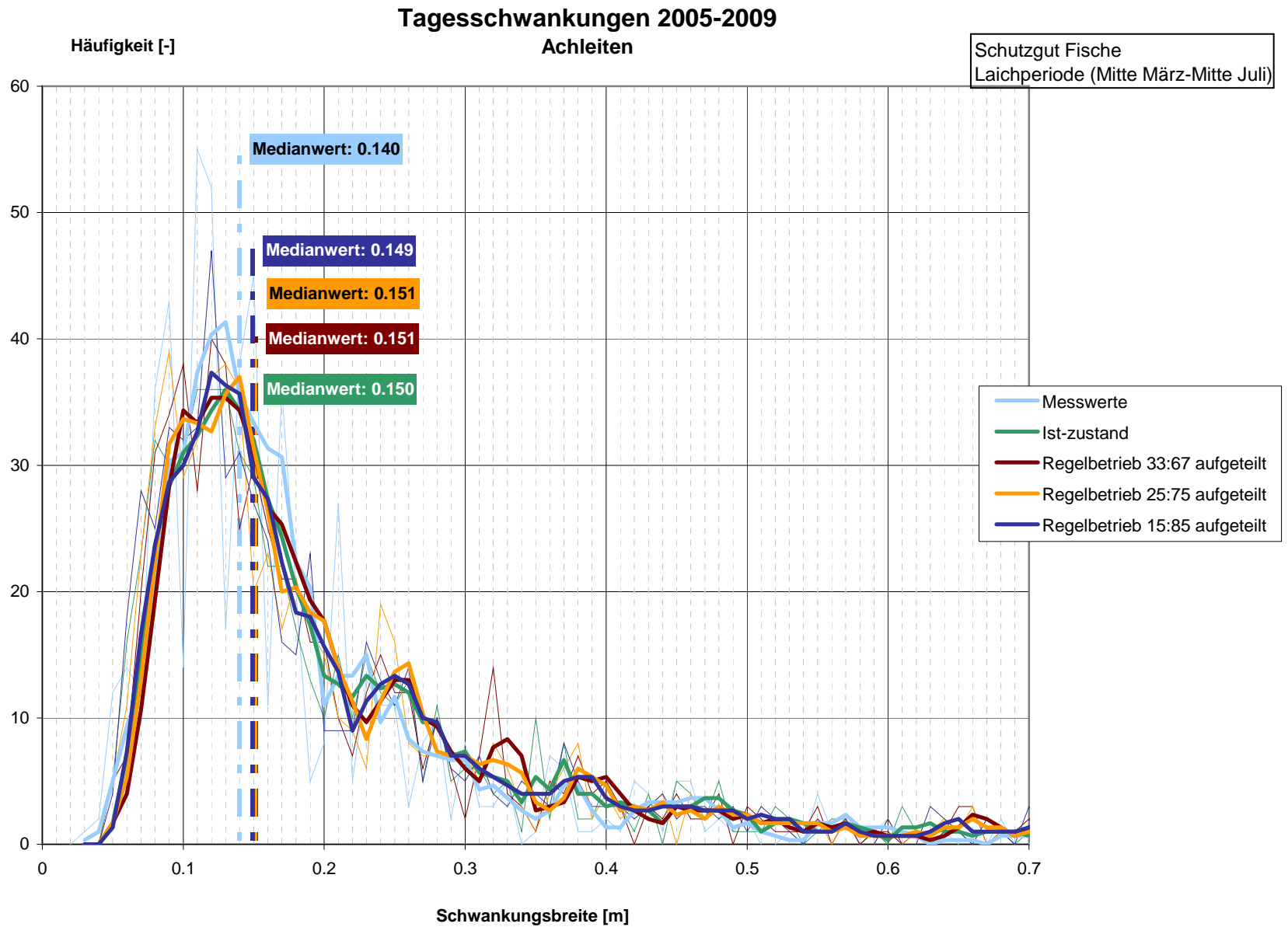


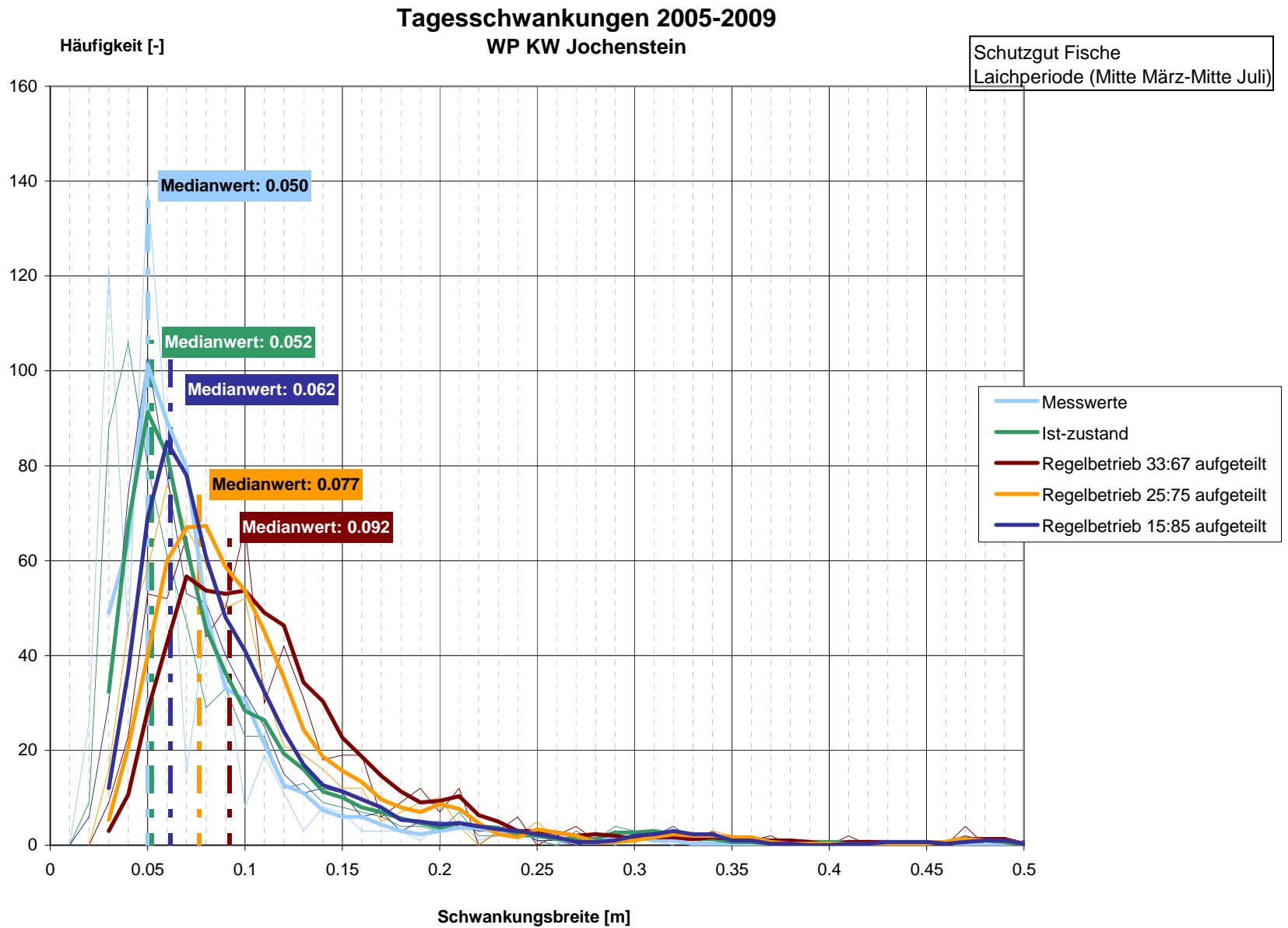


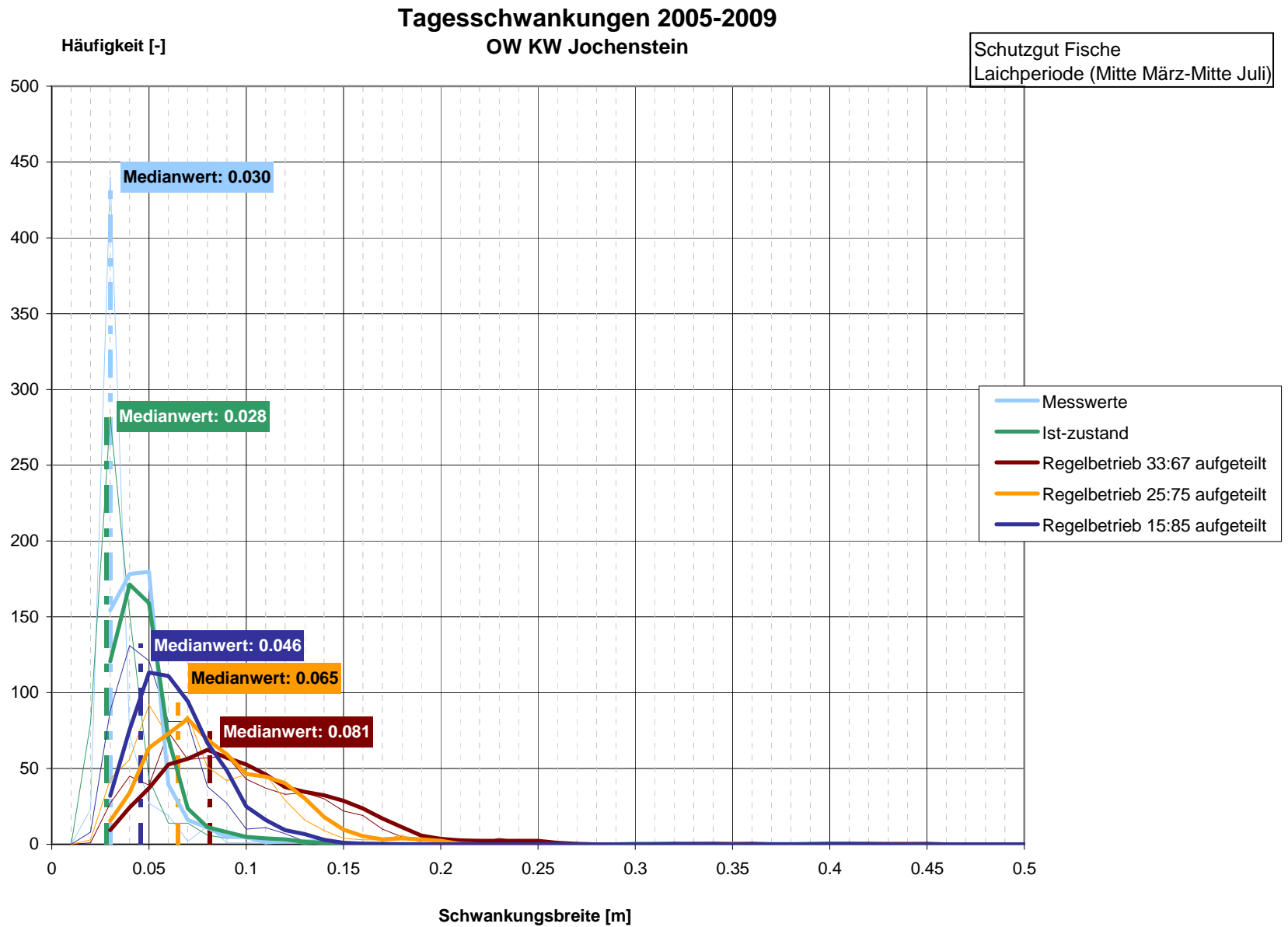


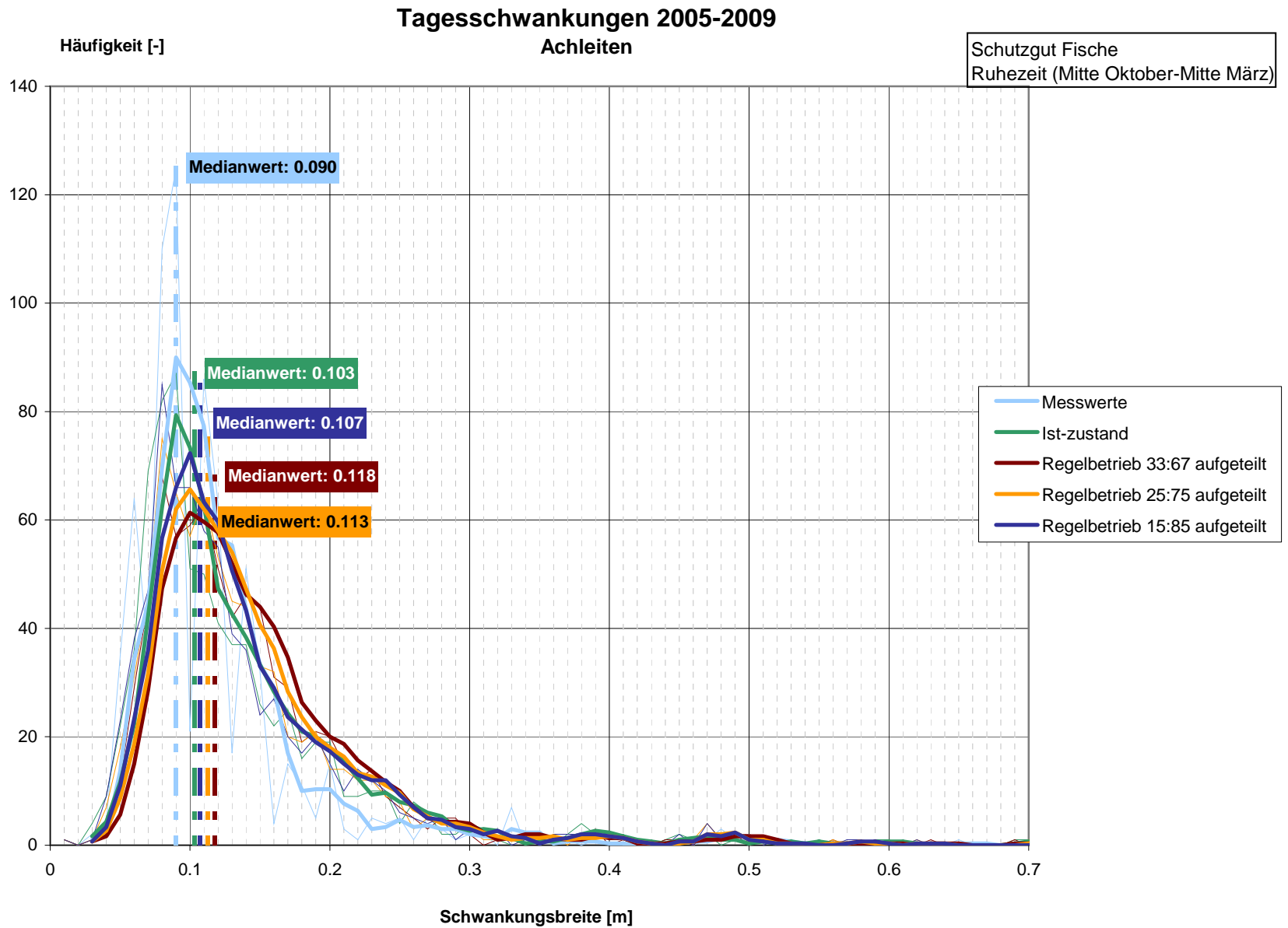


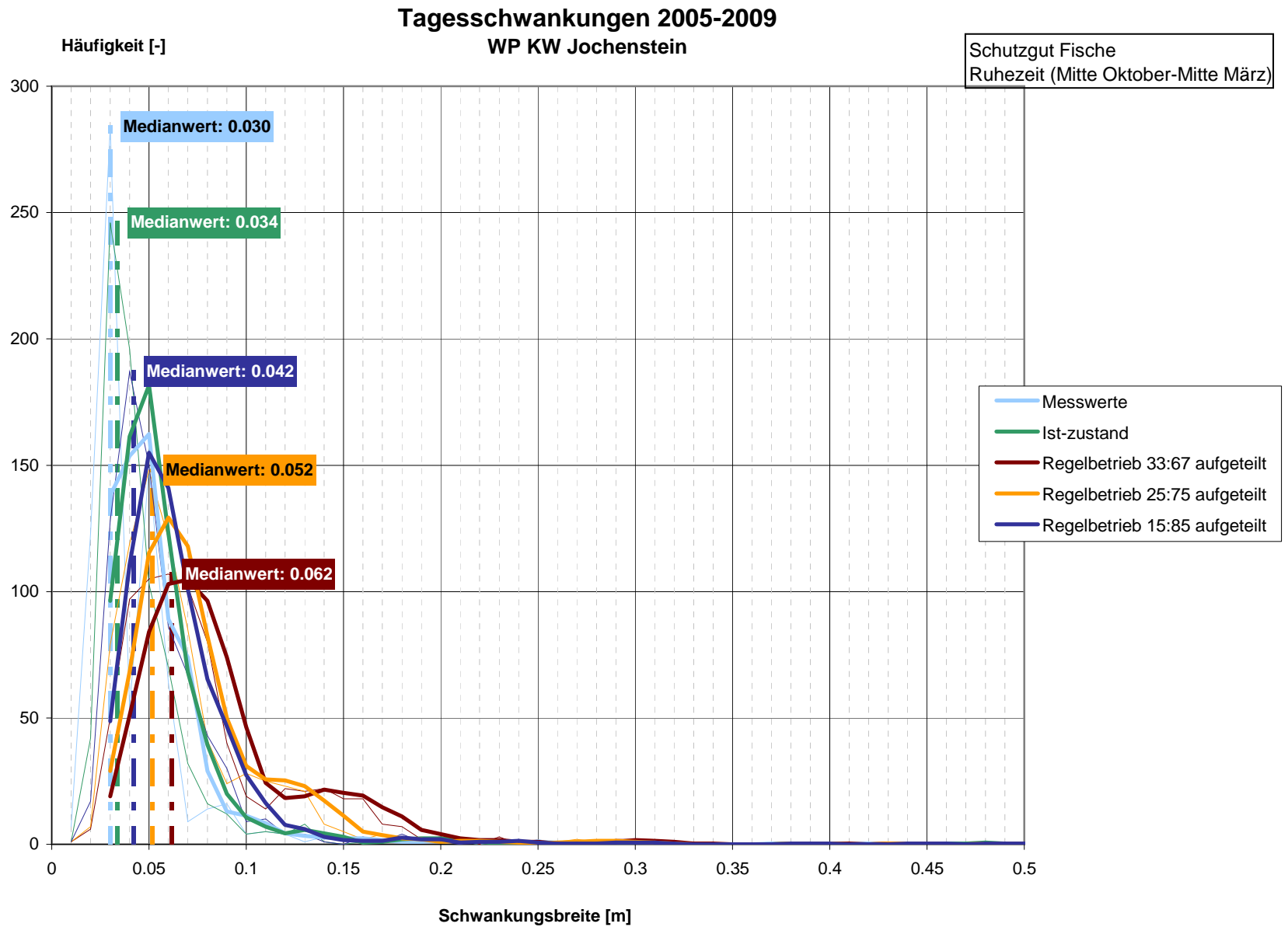


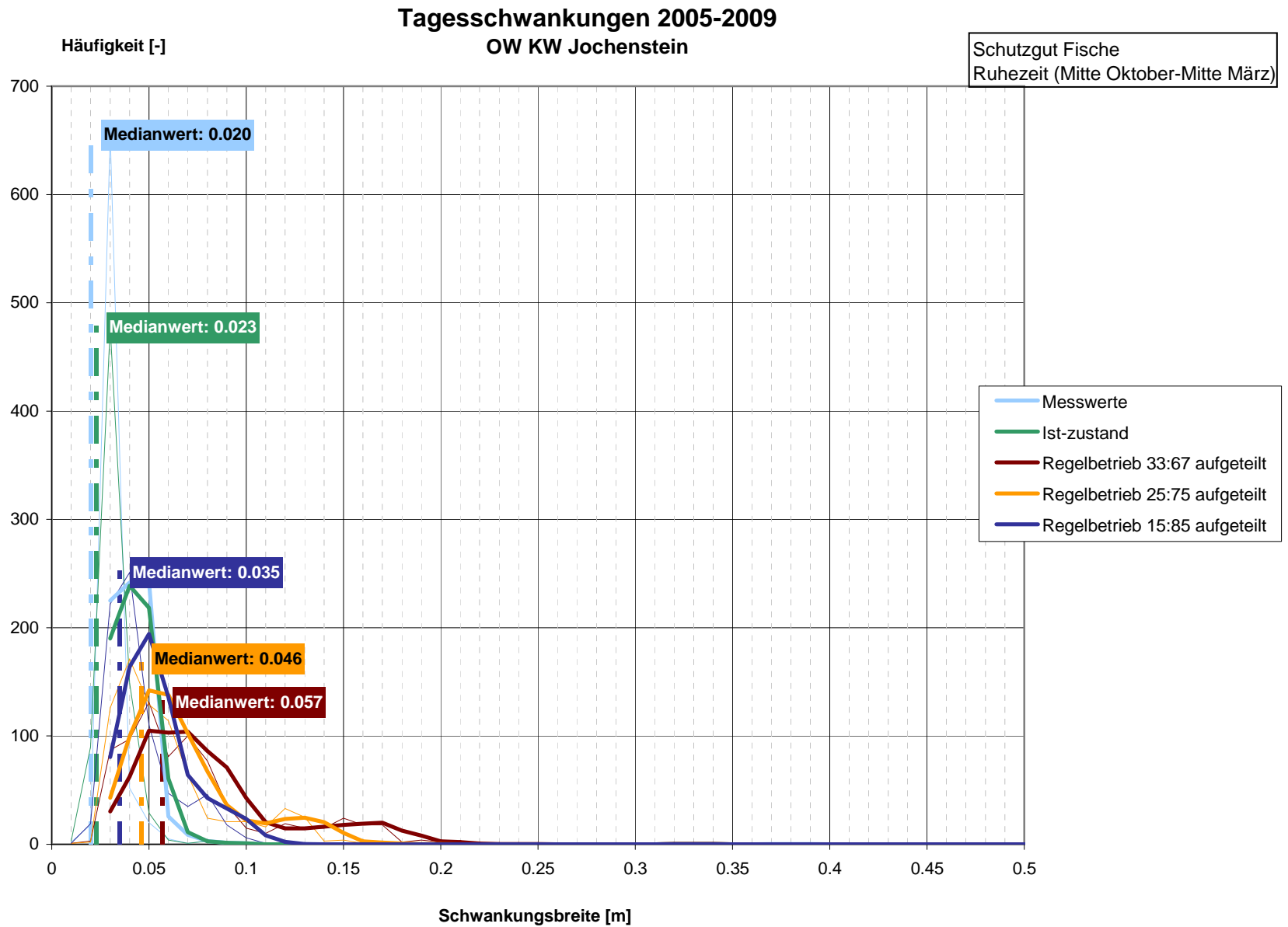


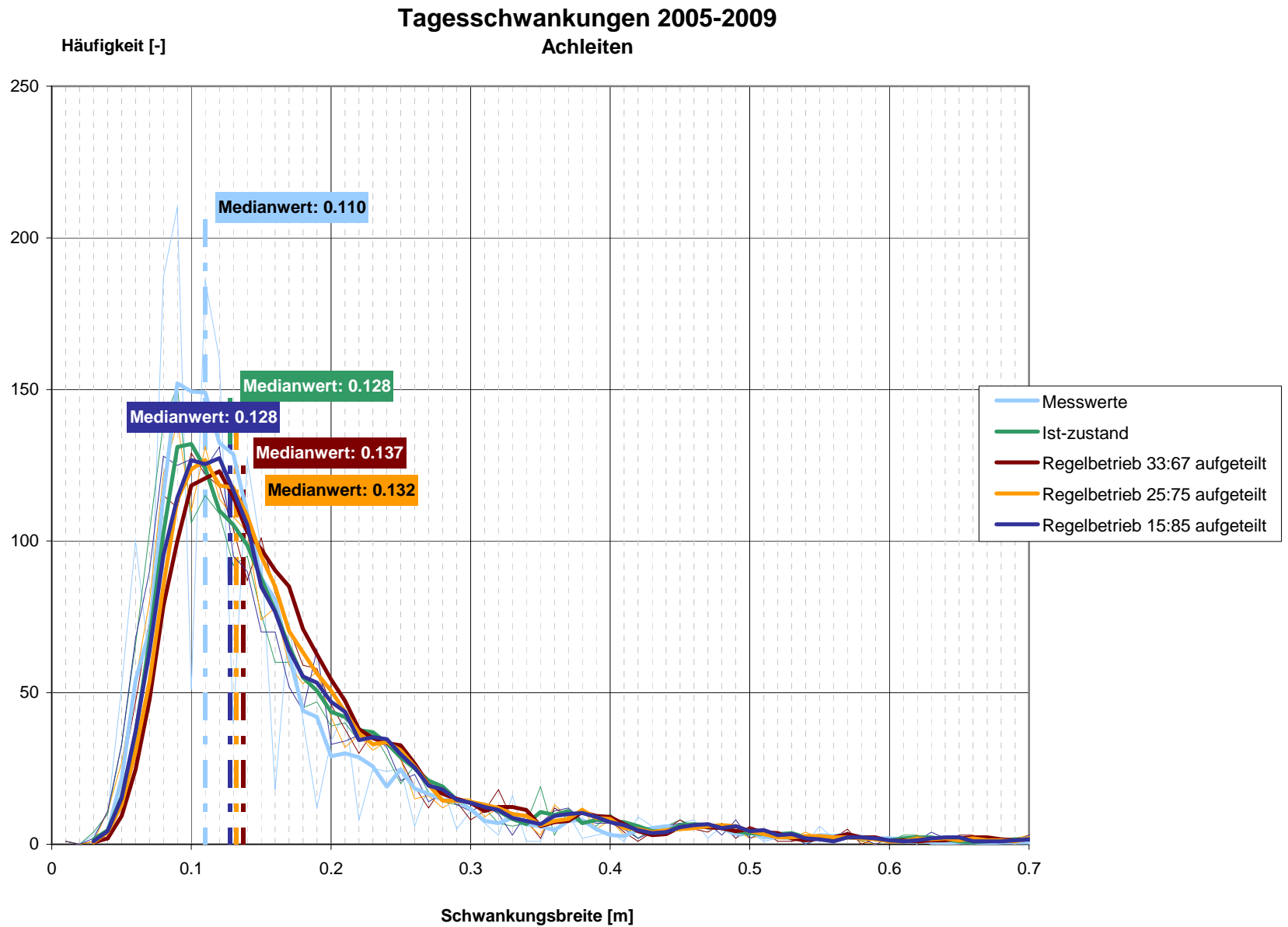




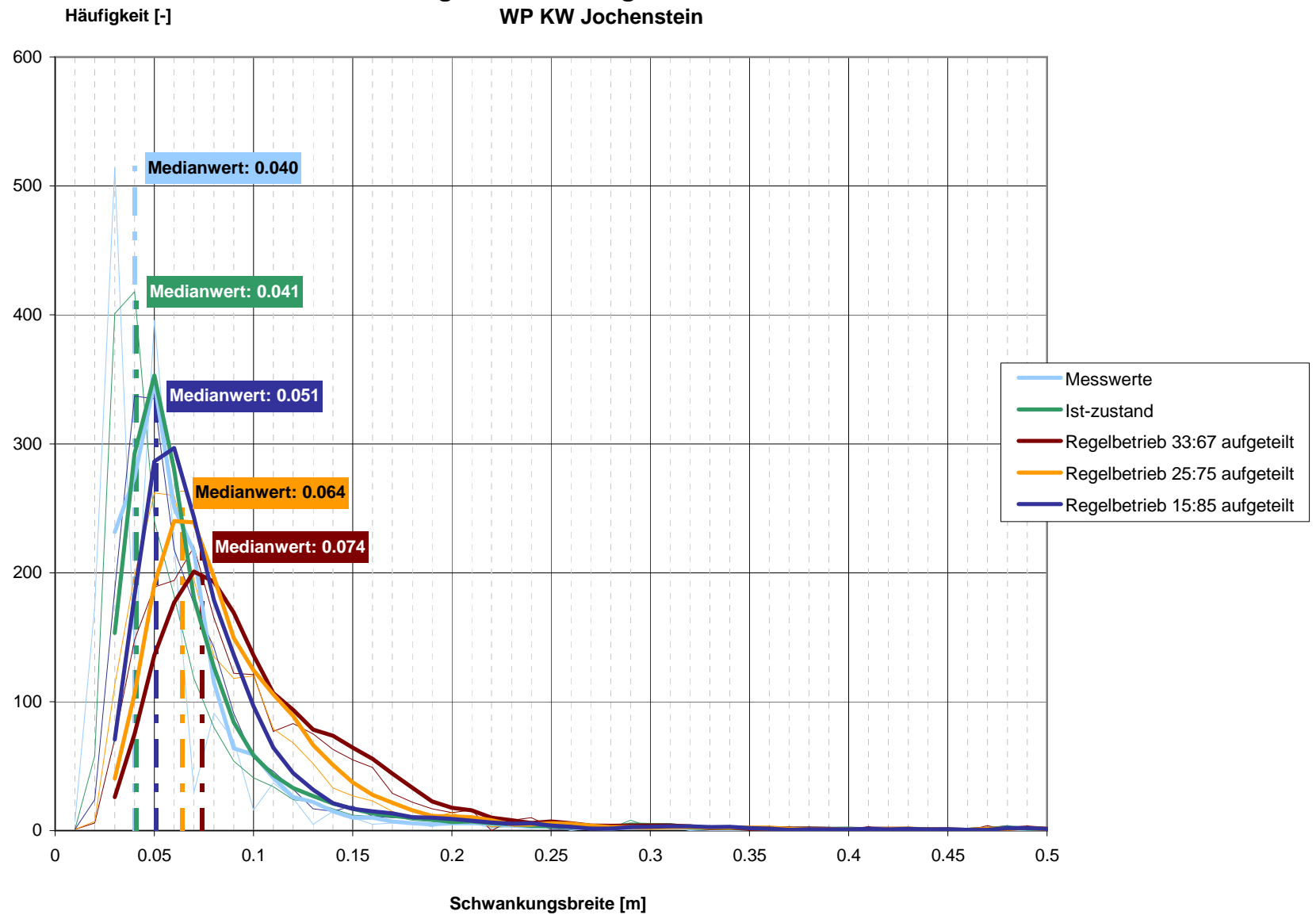




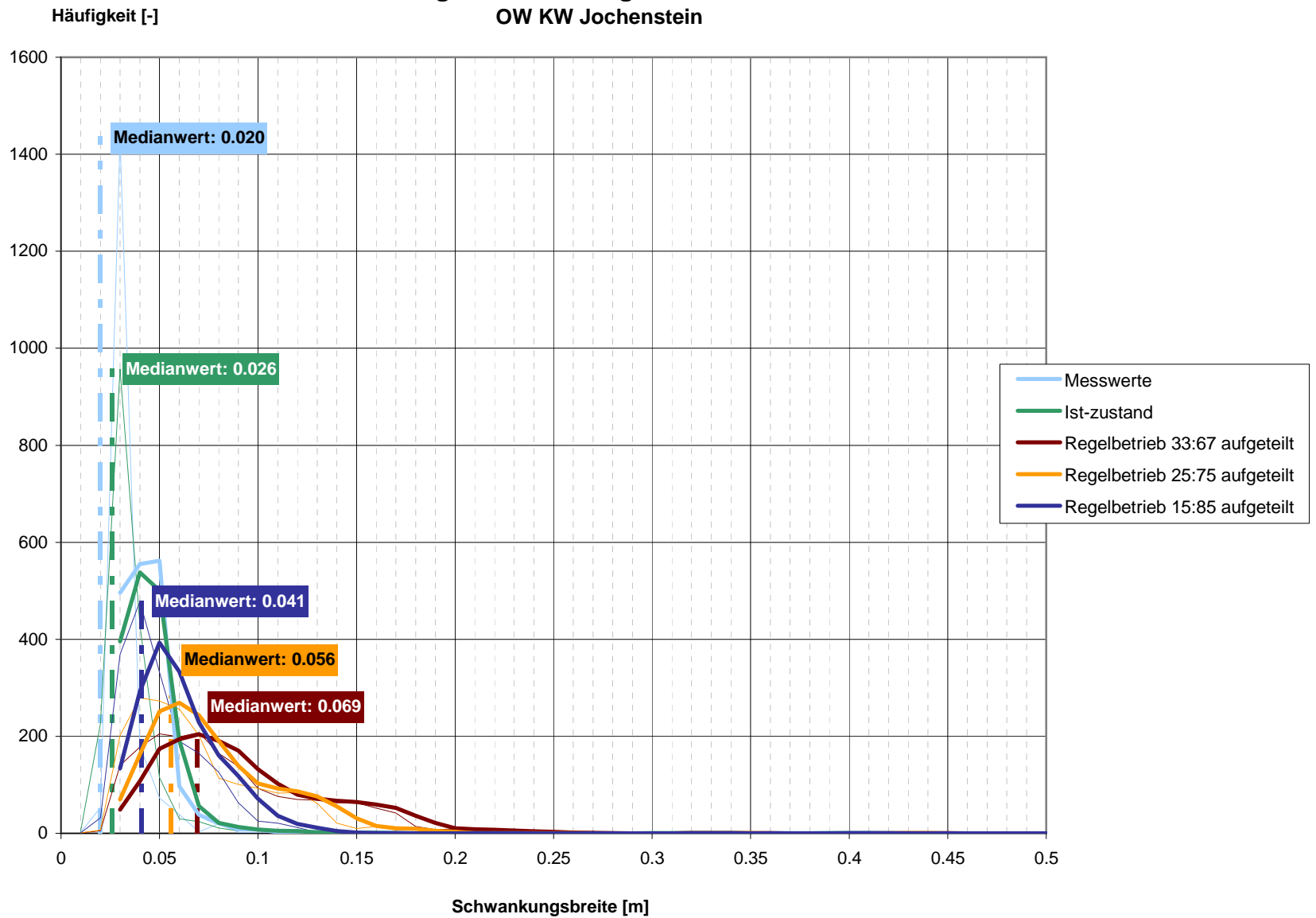


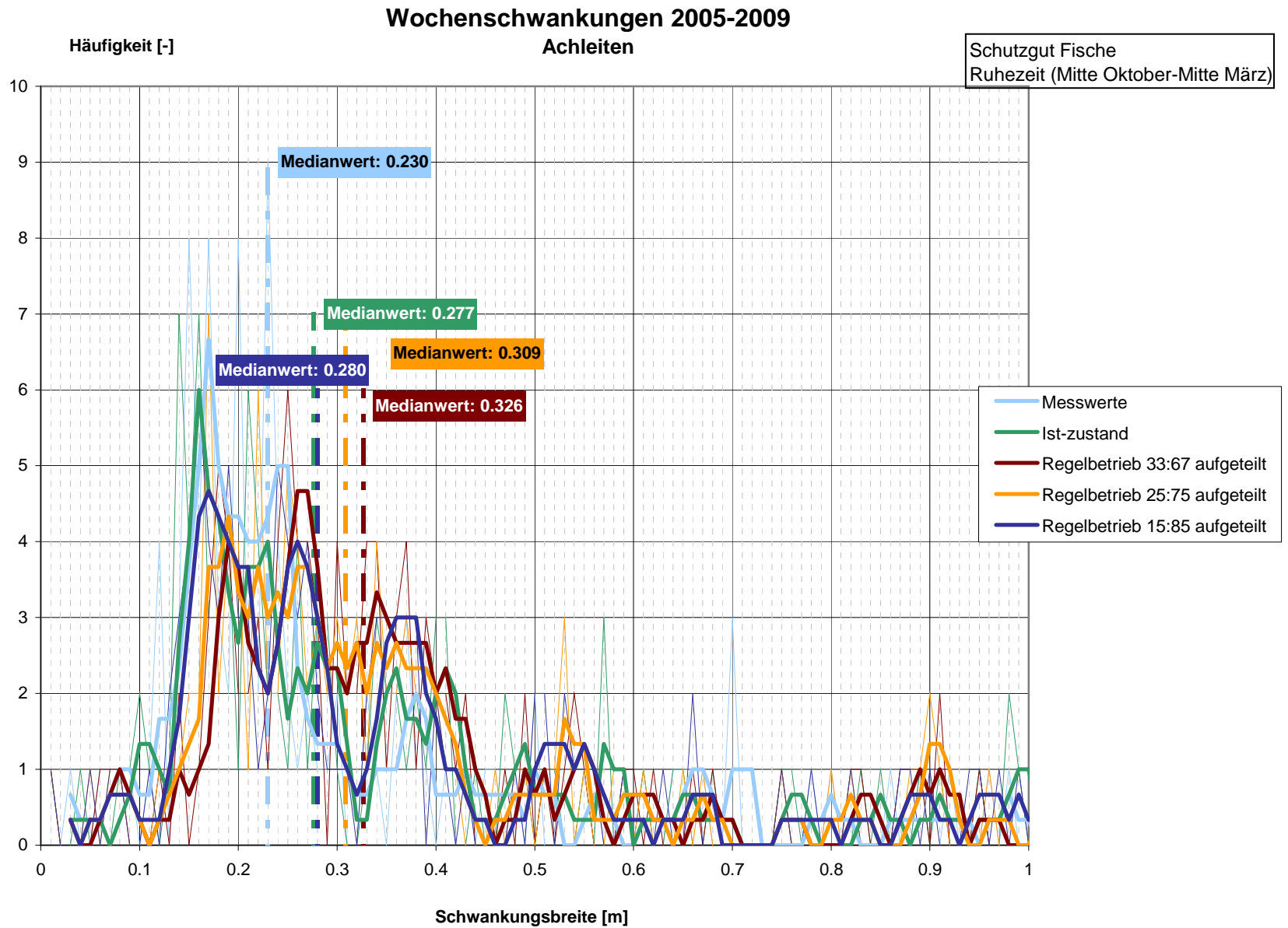


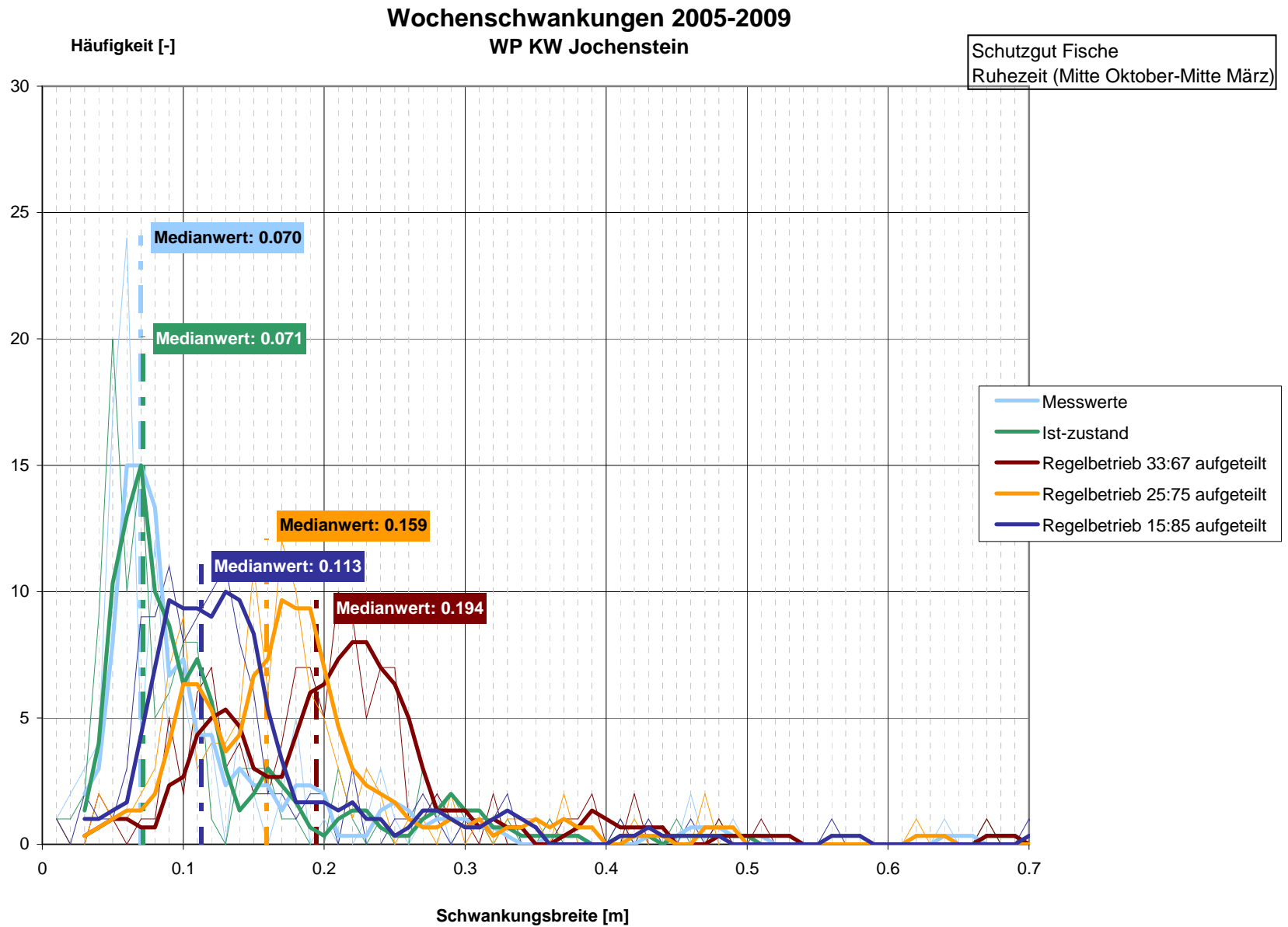
Tagesschwankungen 2005-2009 WP KW Jochenstein

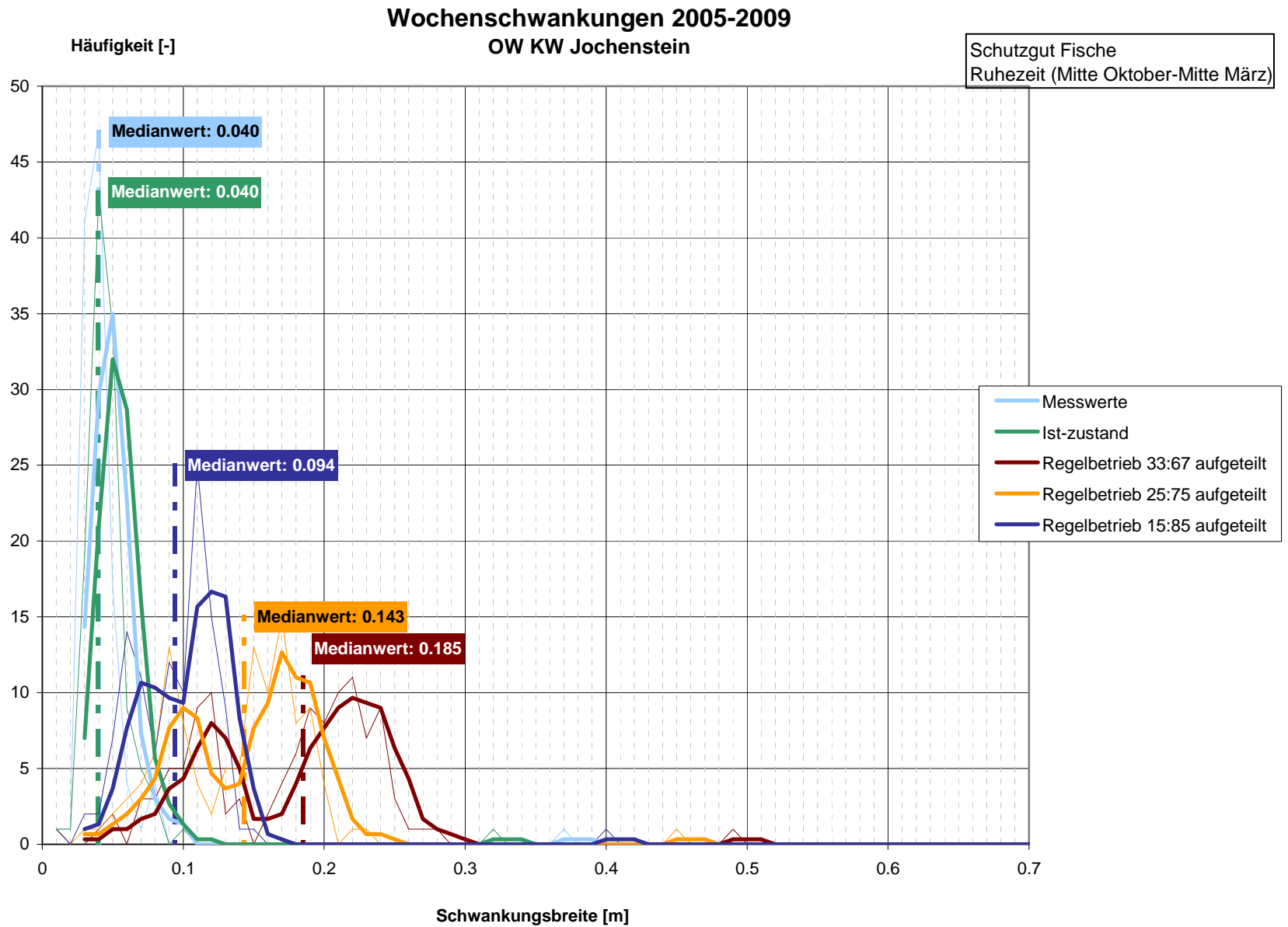


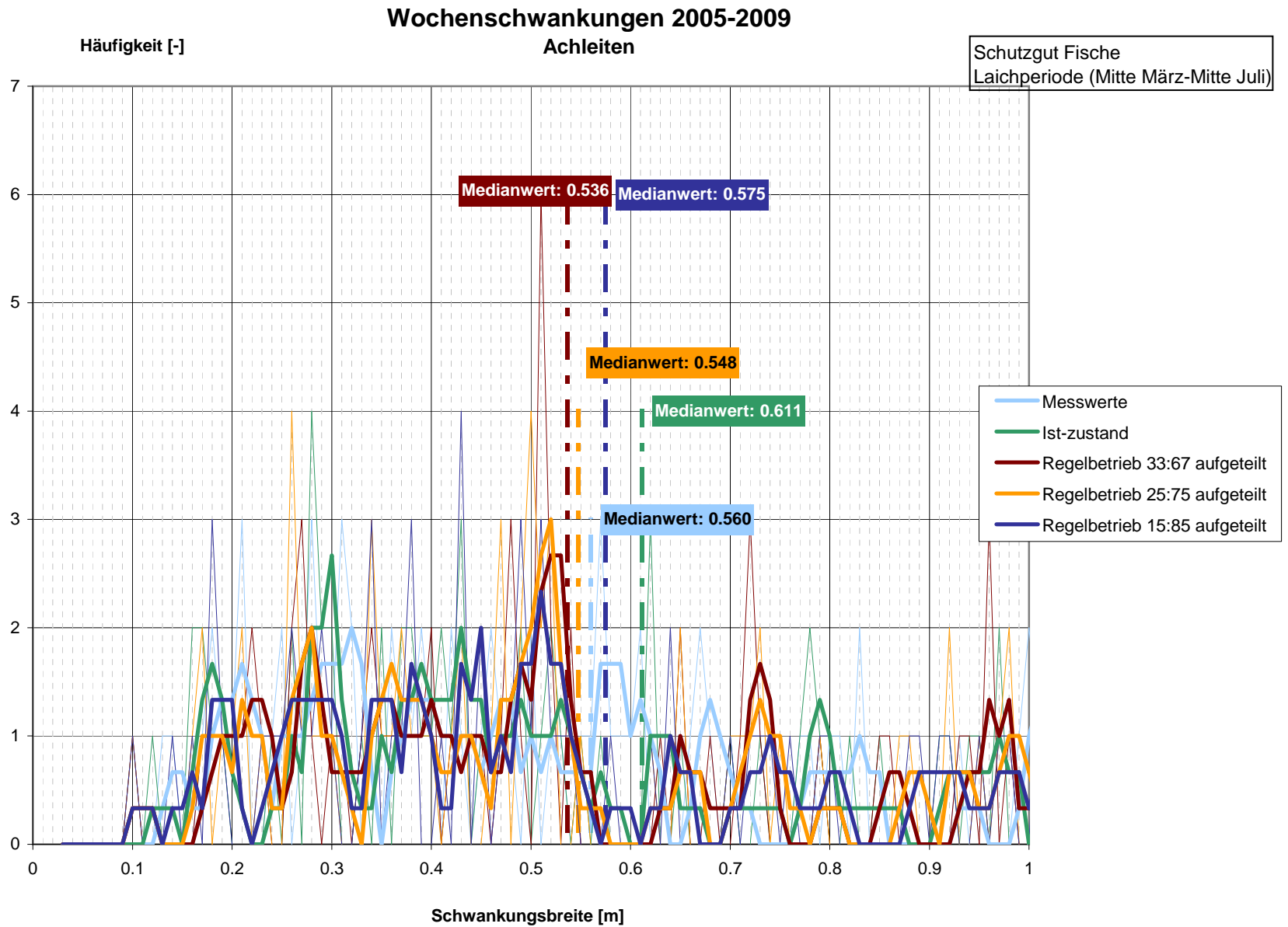
Tagesschwankungen 2005-2009 OW KW Jochenstein

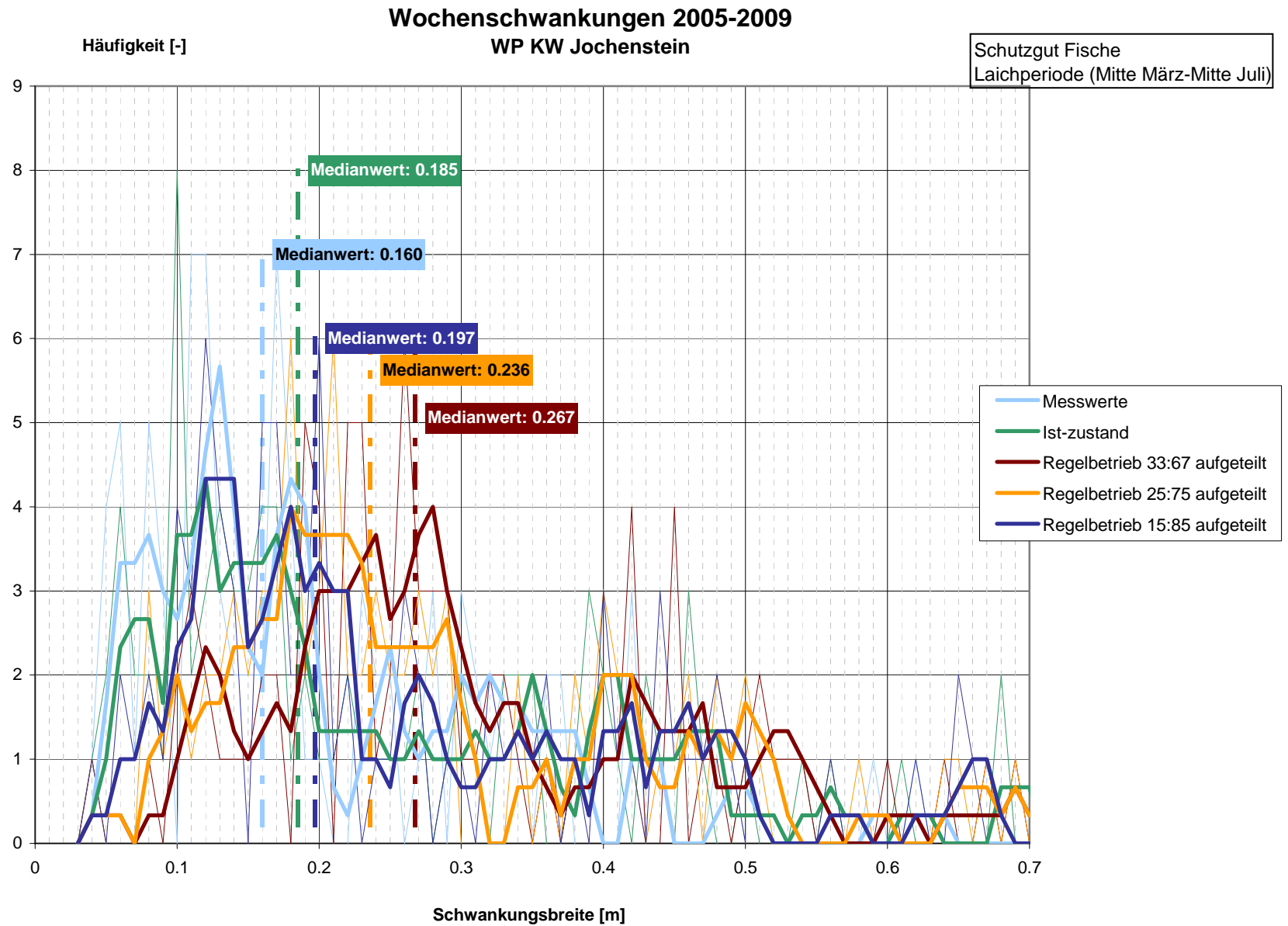


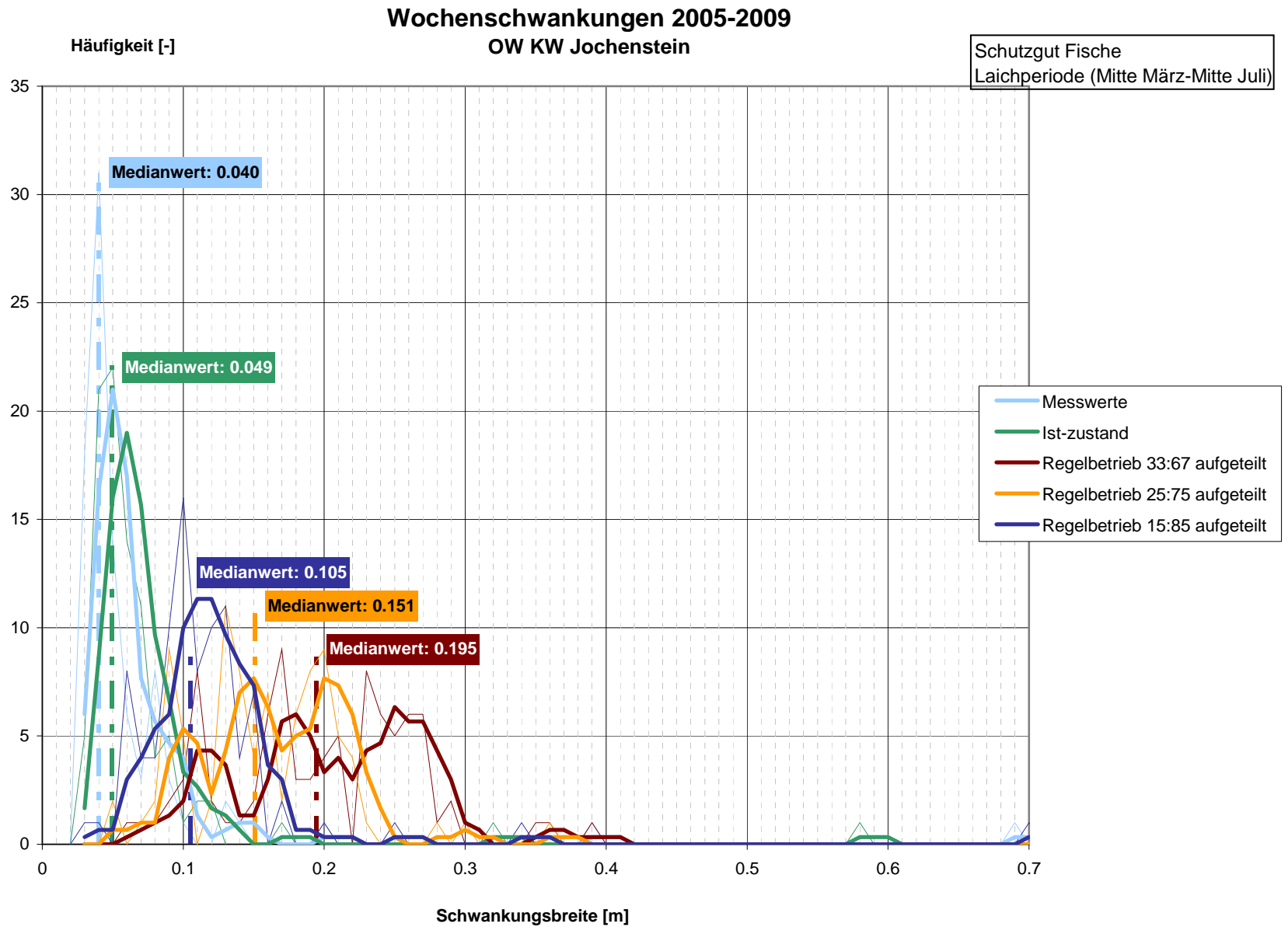


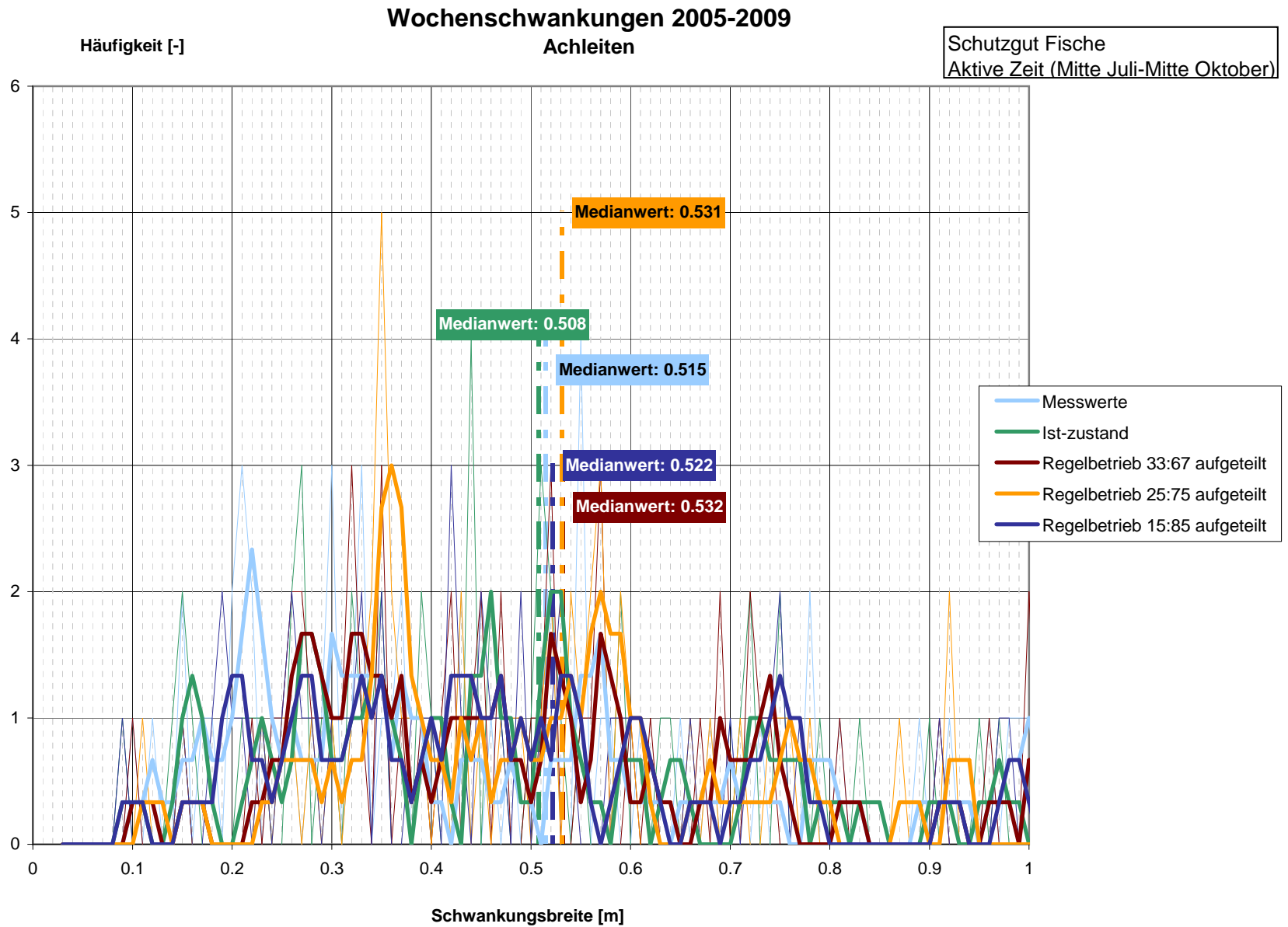


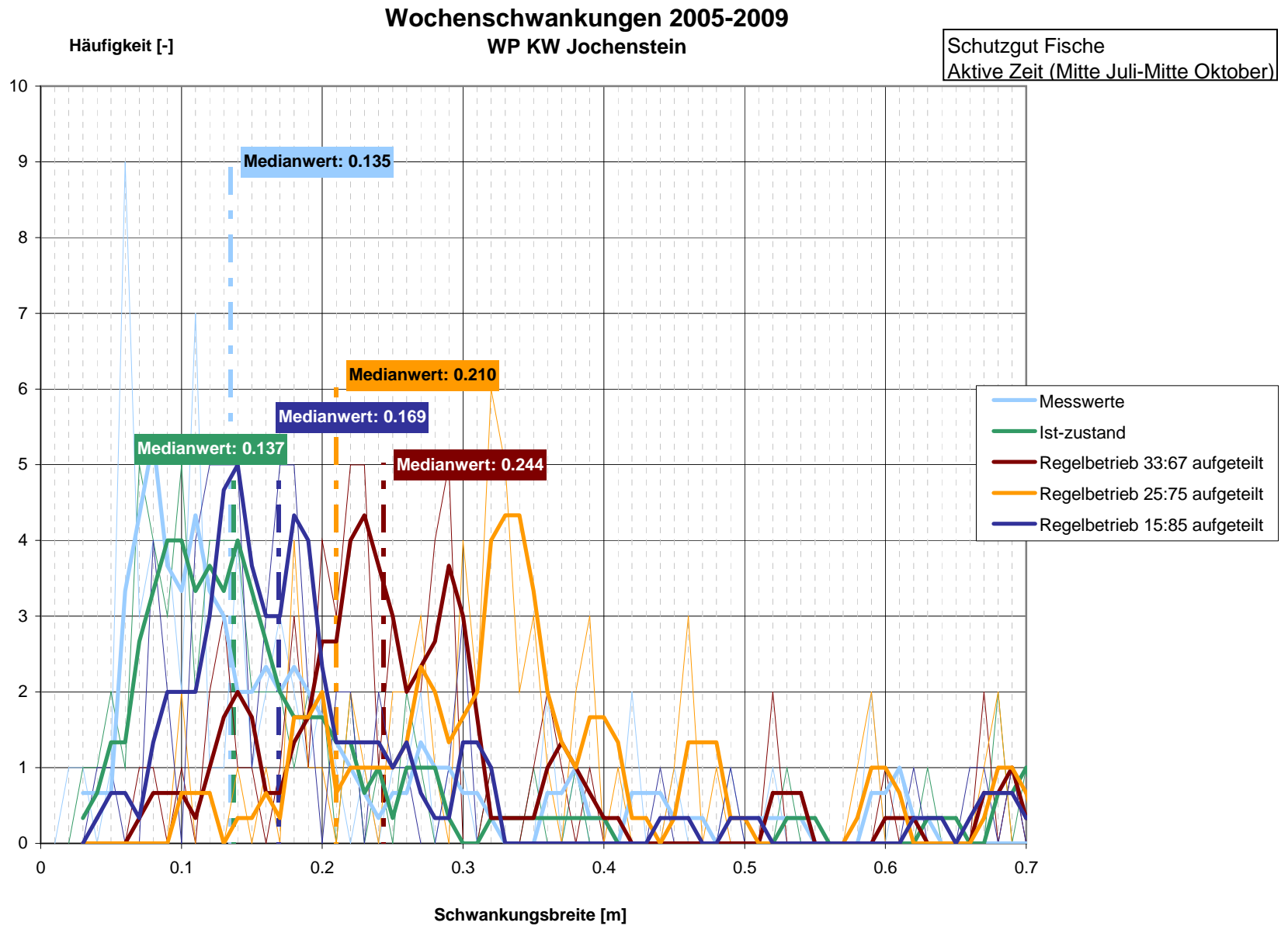


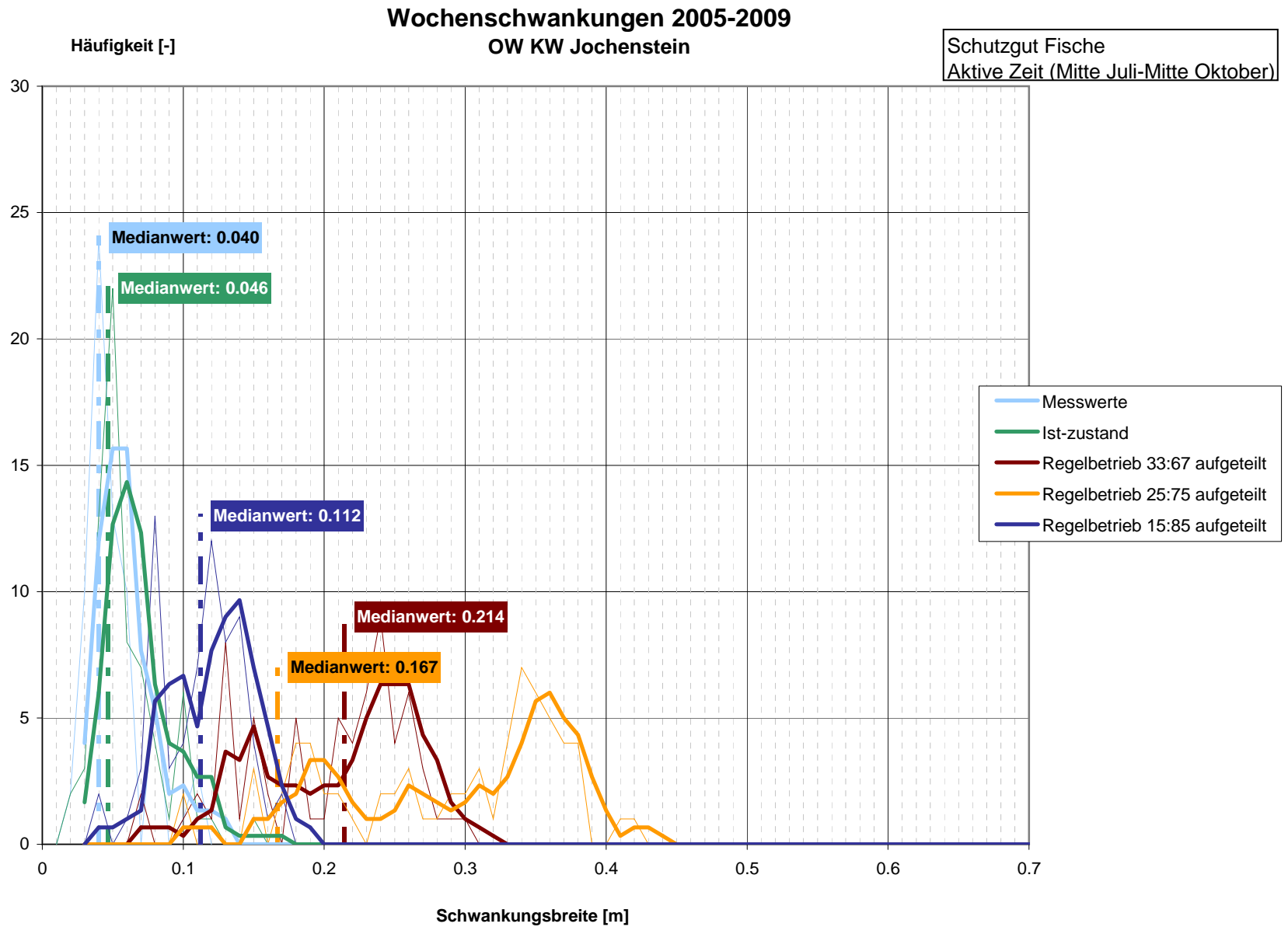


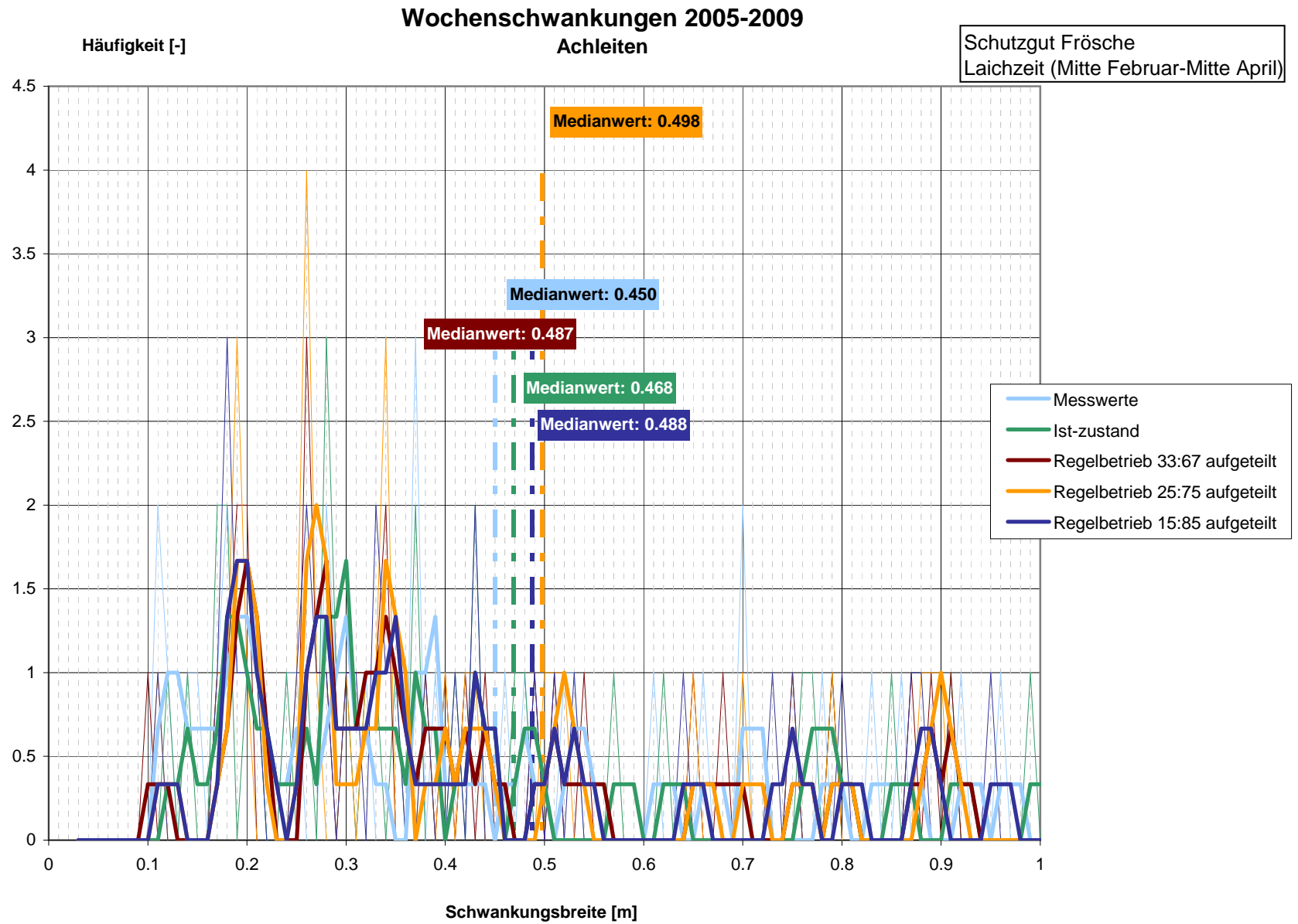


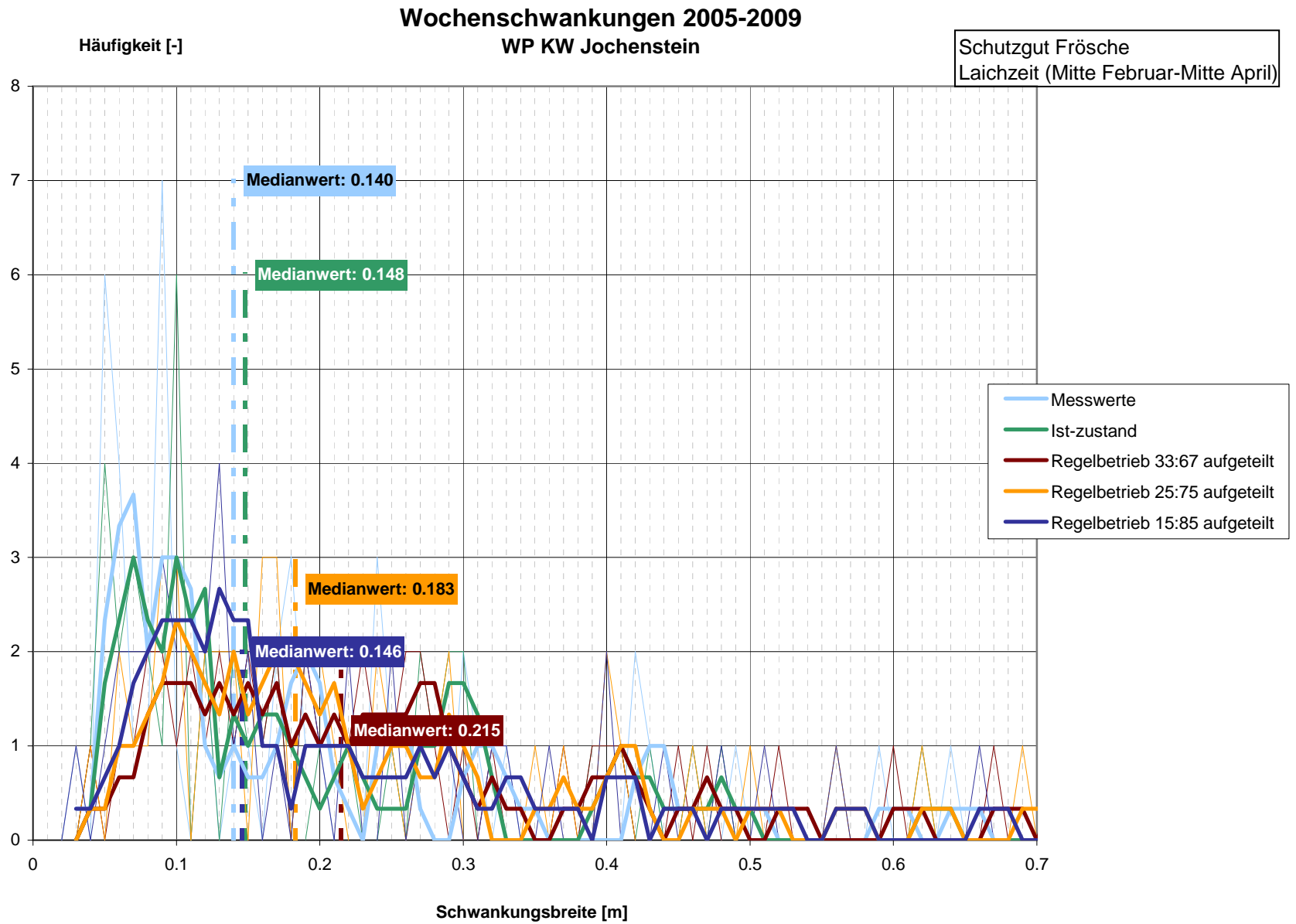


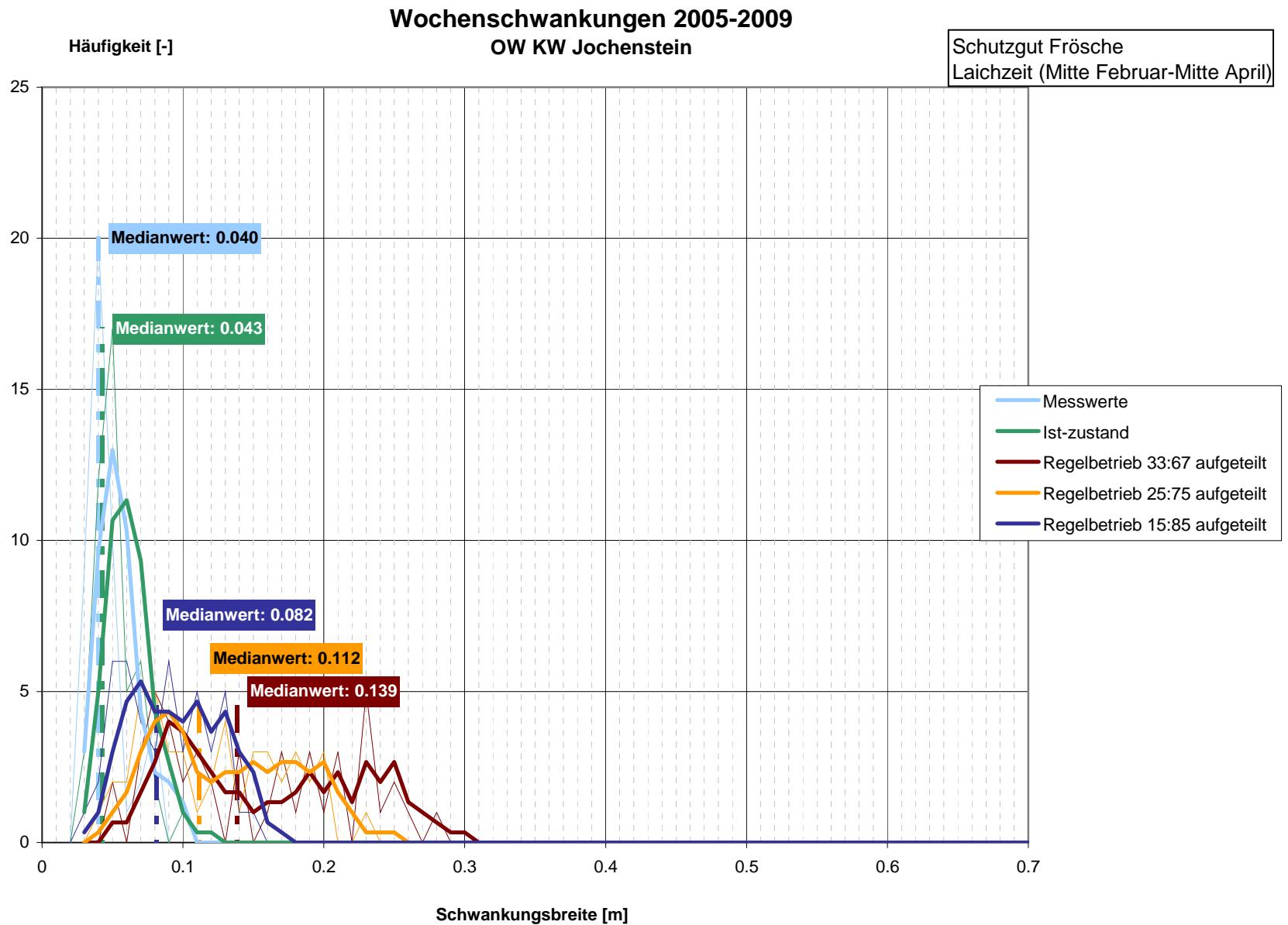


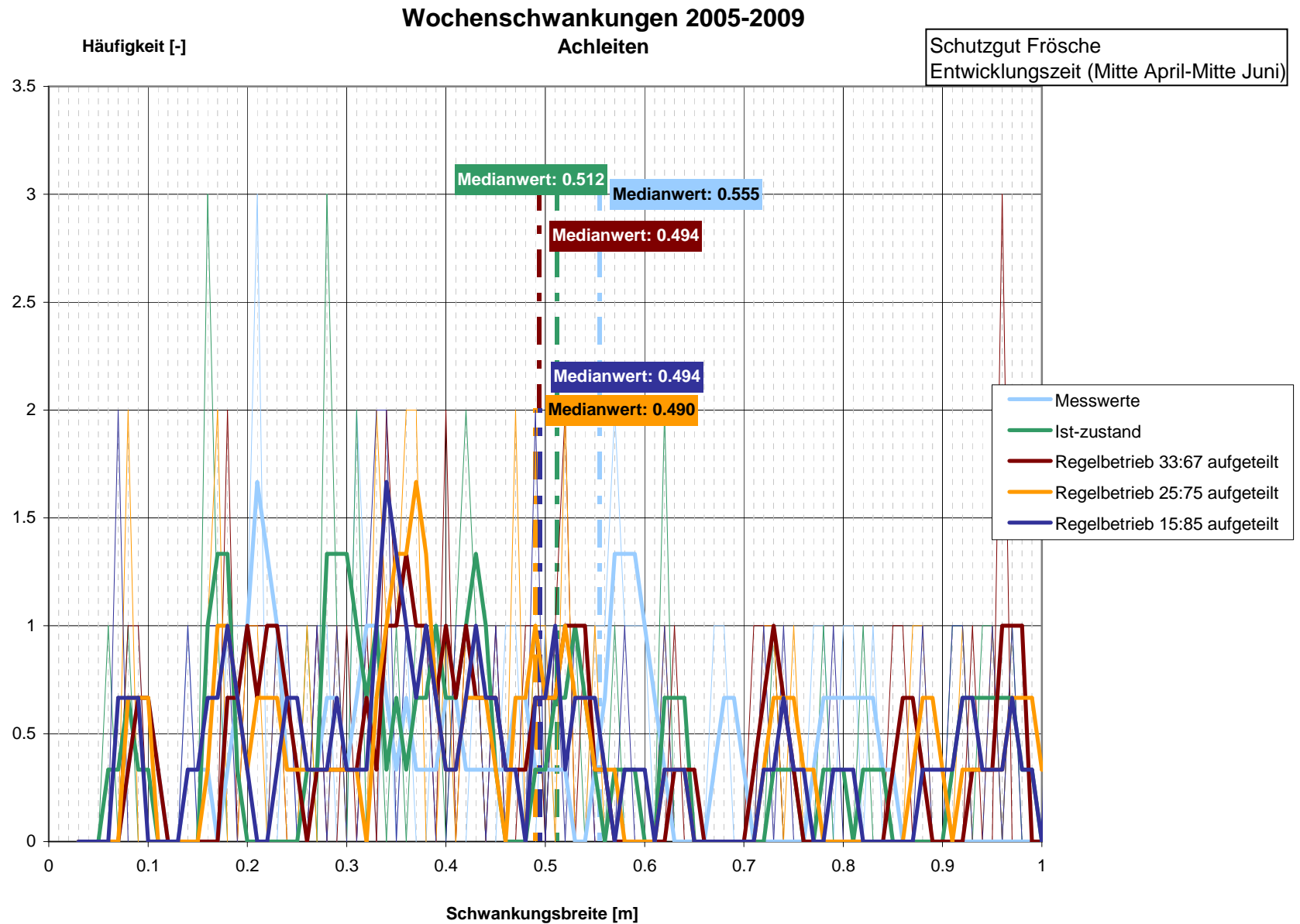


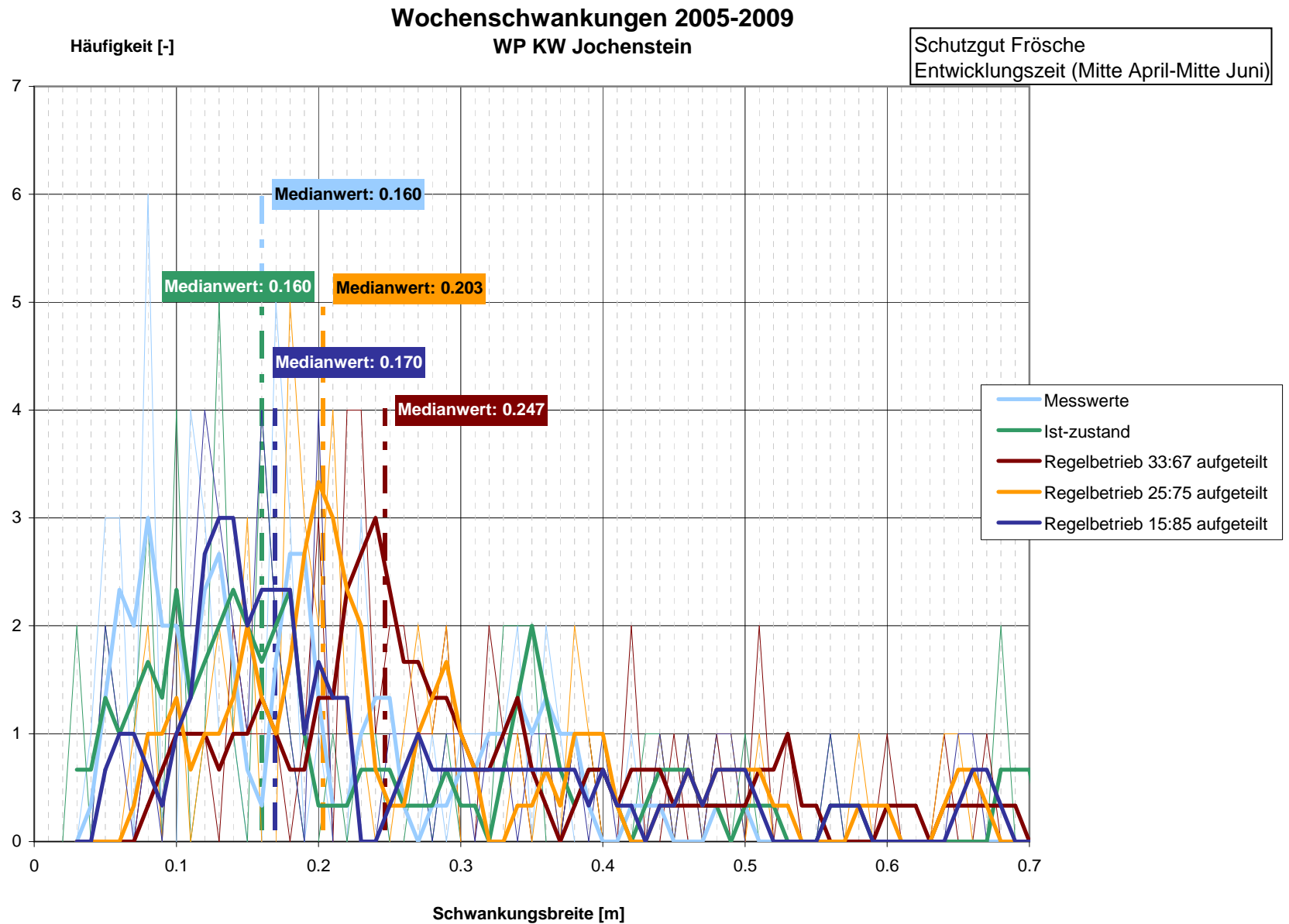


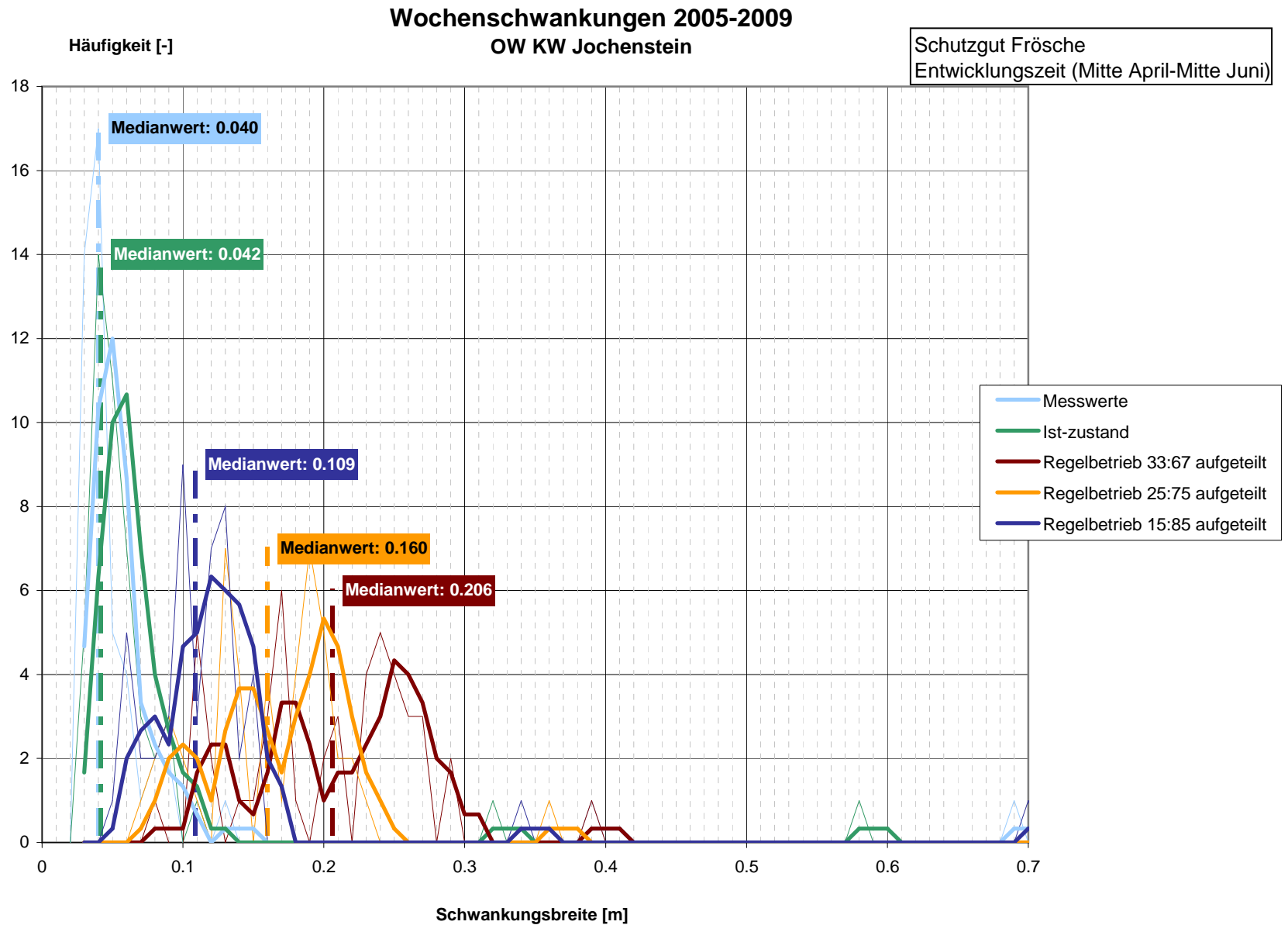




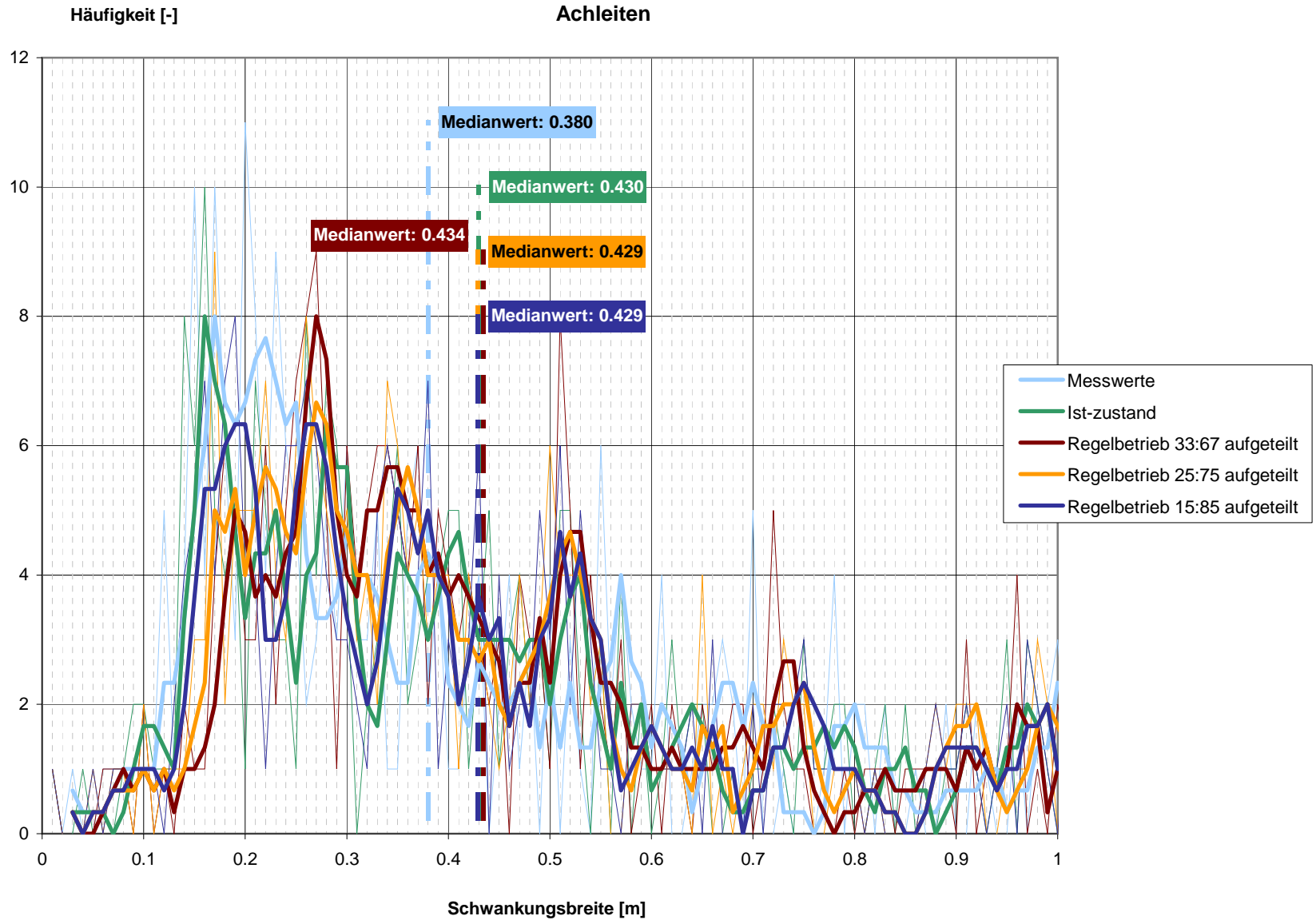




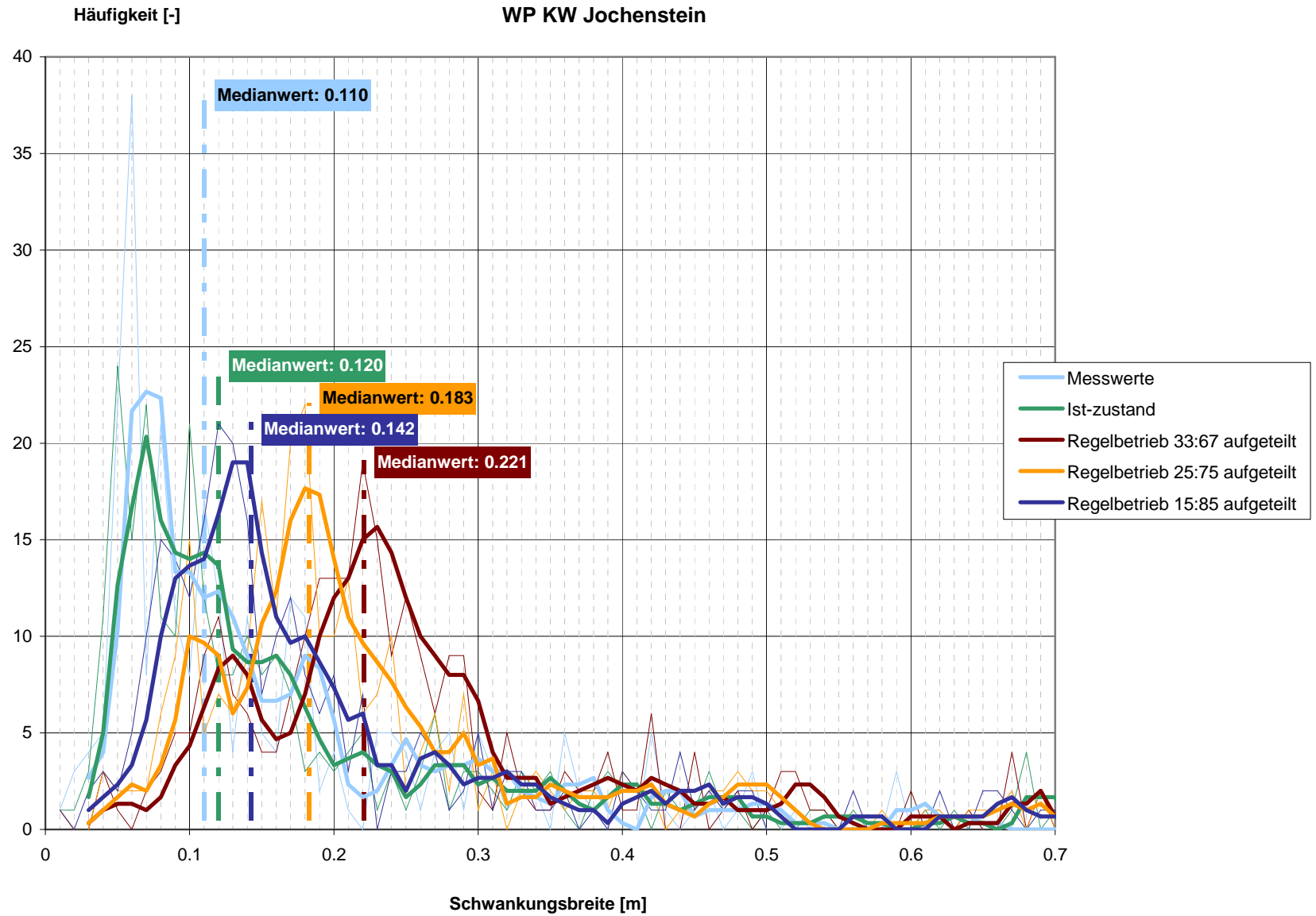




Wochenschwankungen 2005-2009



Wochenschwankungen 2005-2009 WP KW Jochenstein



Wochenschwankungen 2005-2009 OW KW Jochenstein

