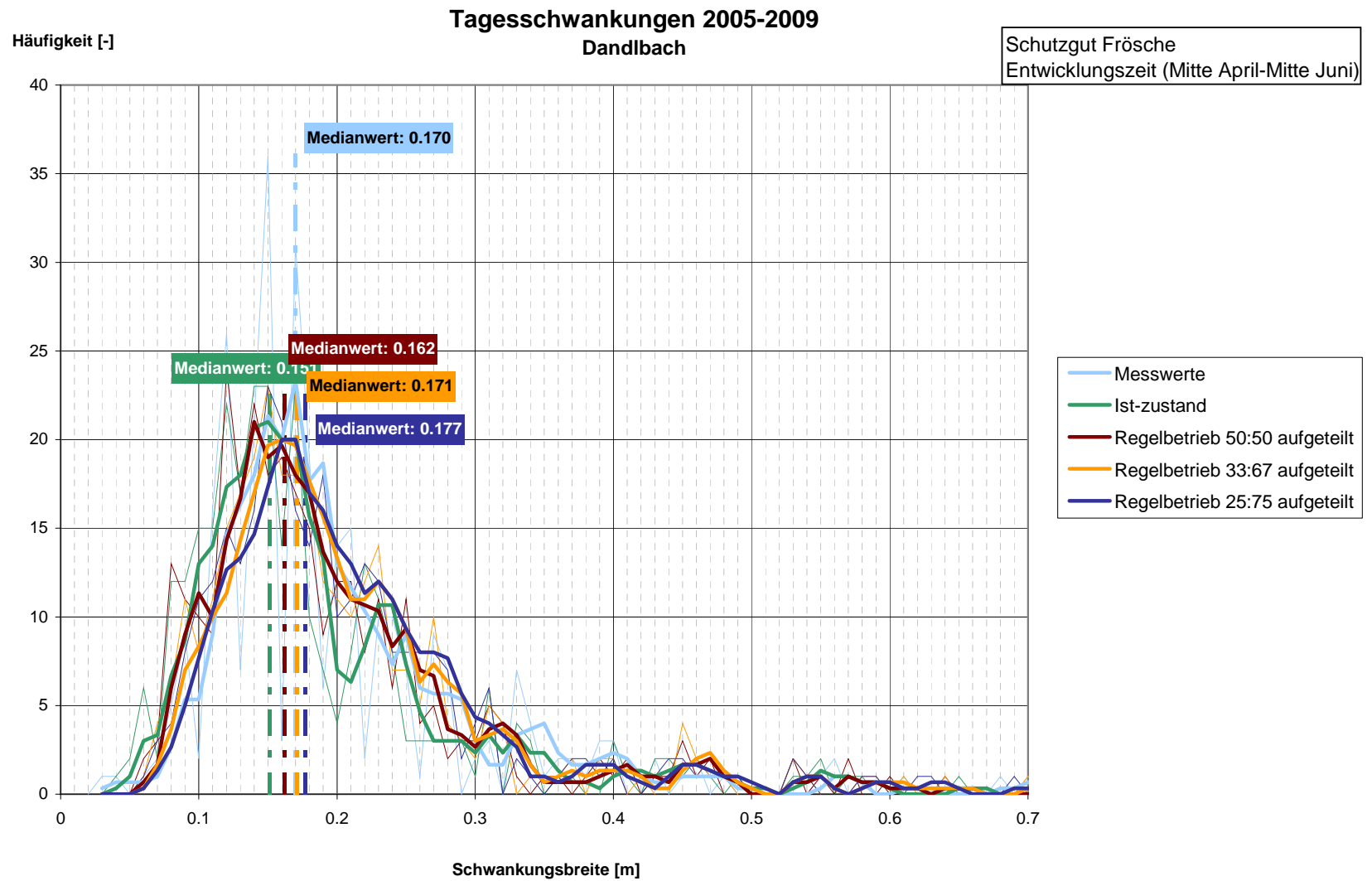


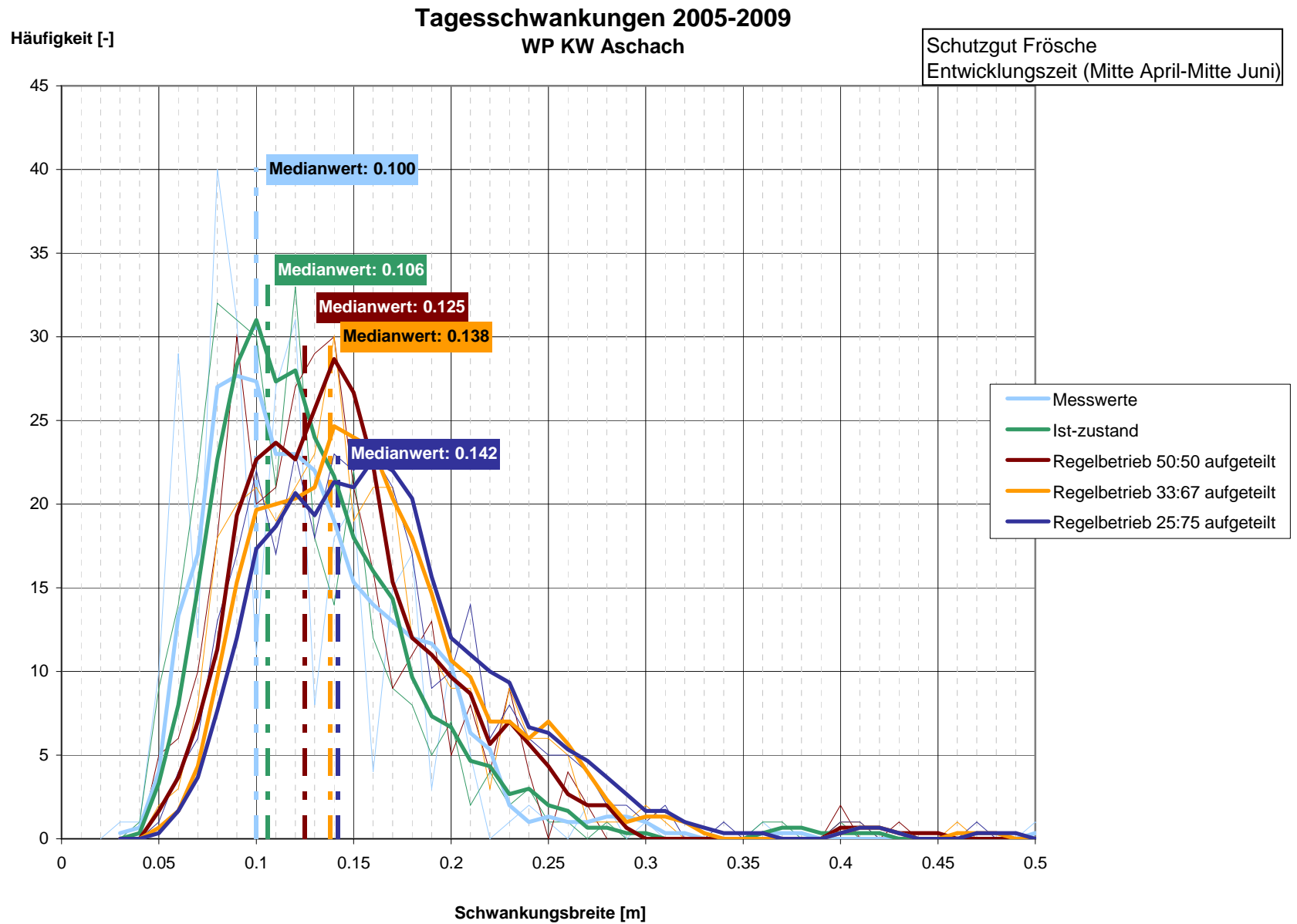
**DONAU-  
KRAFTWERK  
JOCHENSTEIN**  
AKTIENGESELLSCHAFT

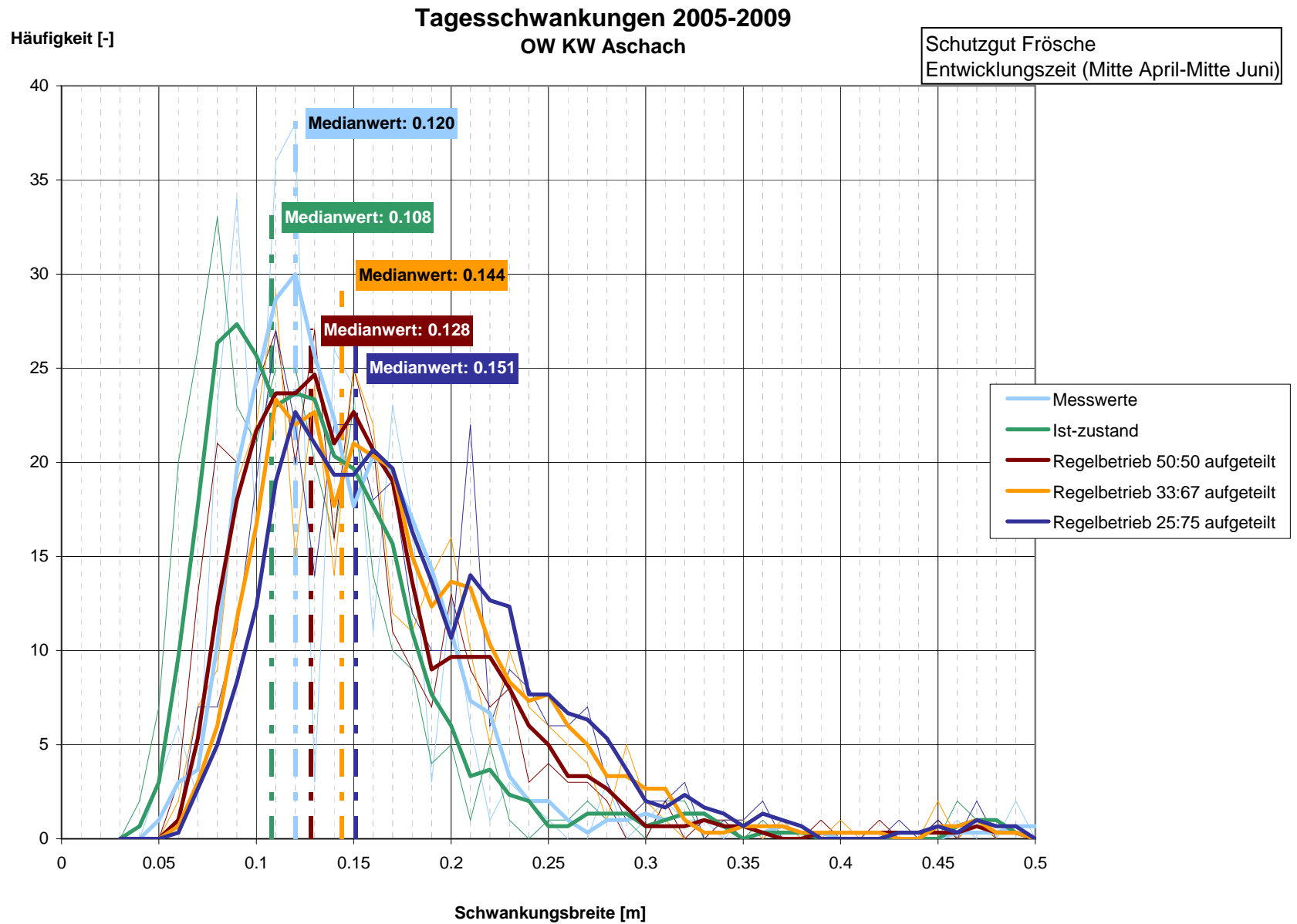
## An abstract, artistic representation of liquid movement. The image features vibrant green and blue translucent waves flowing across a white background. Numerous small, clear bubbles are scattered throughout the lower portion of the composition, giving it a sense of motion and texture. The overall effect is clean, modern, and refreshing.

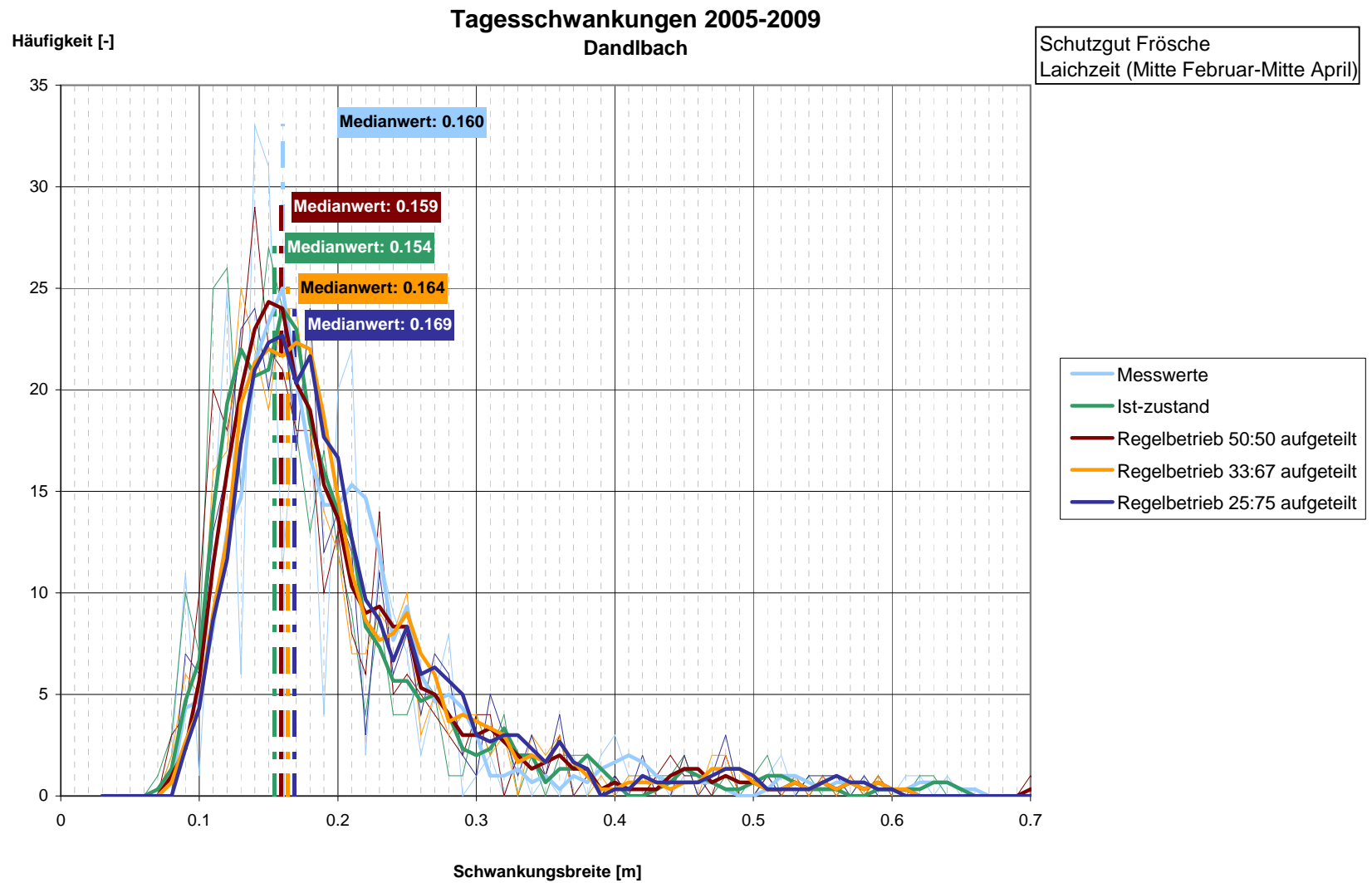
[illegible]

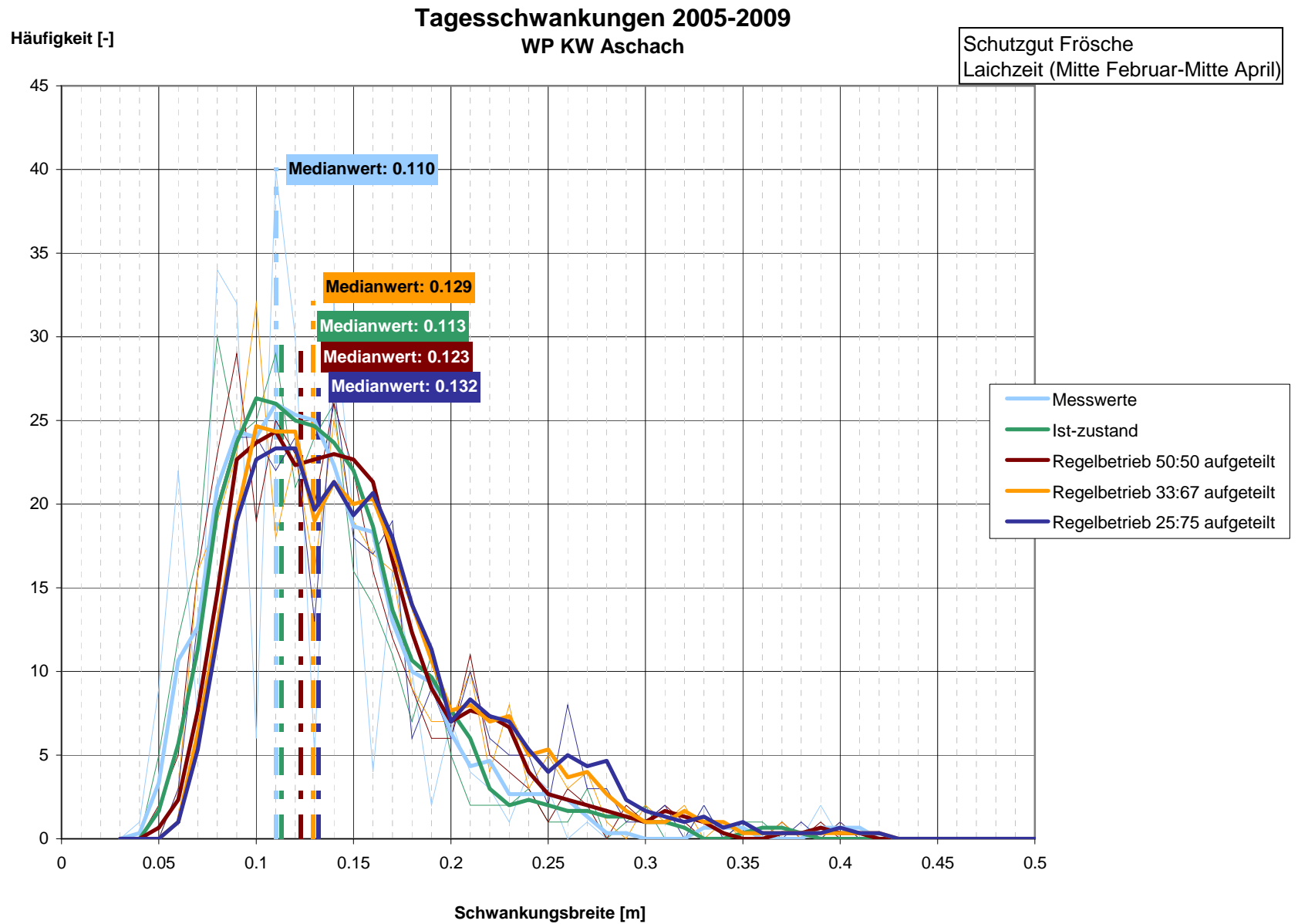


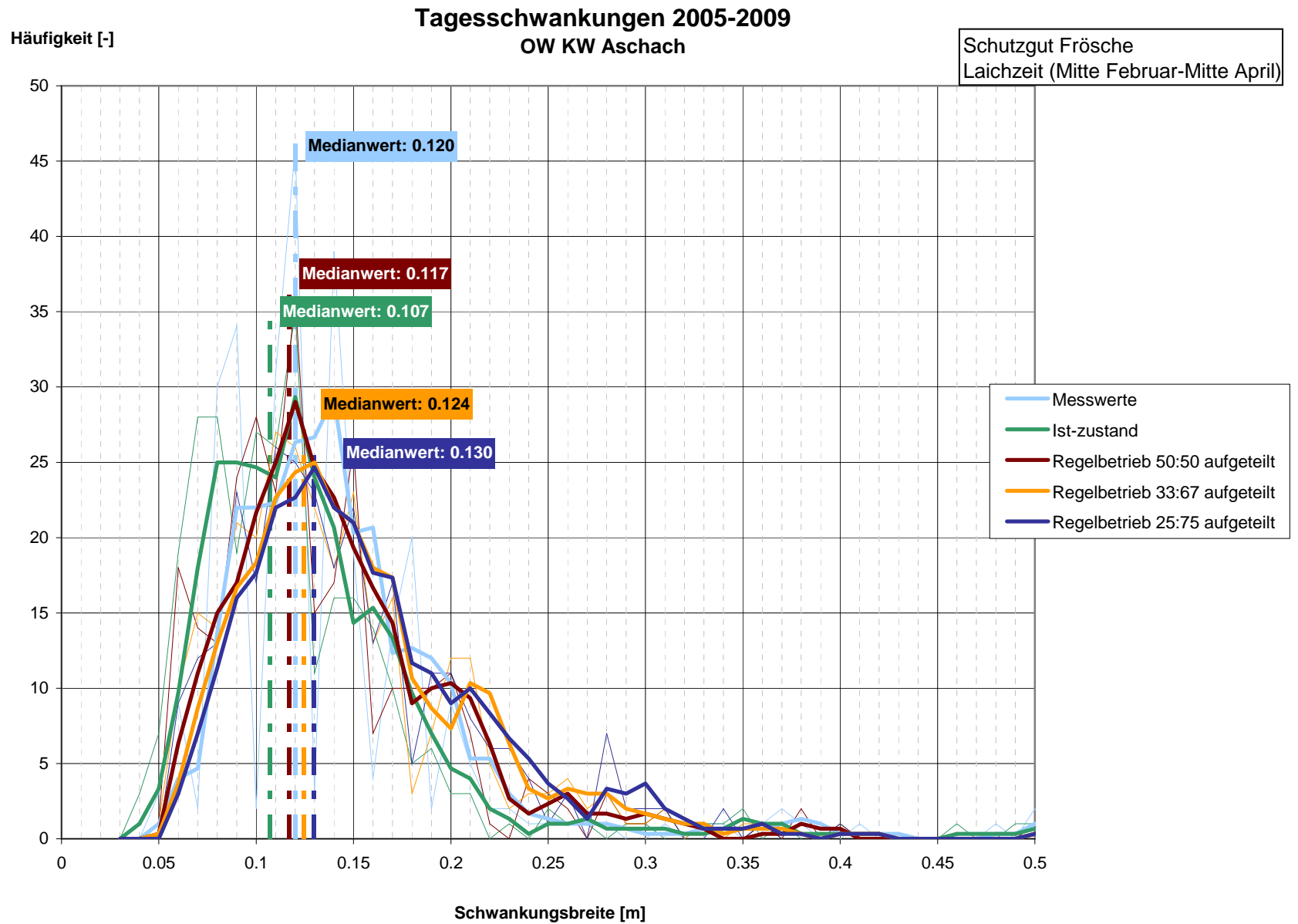




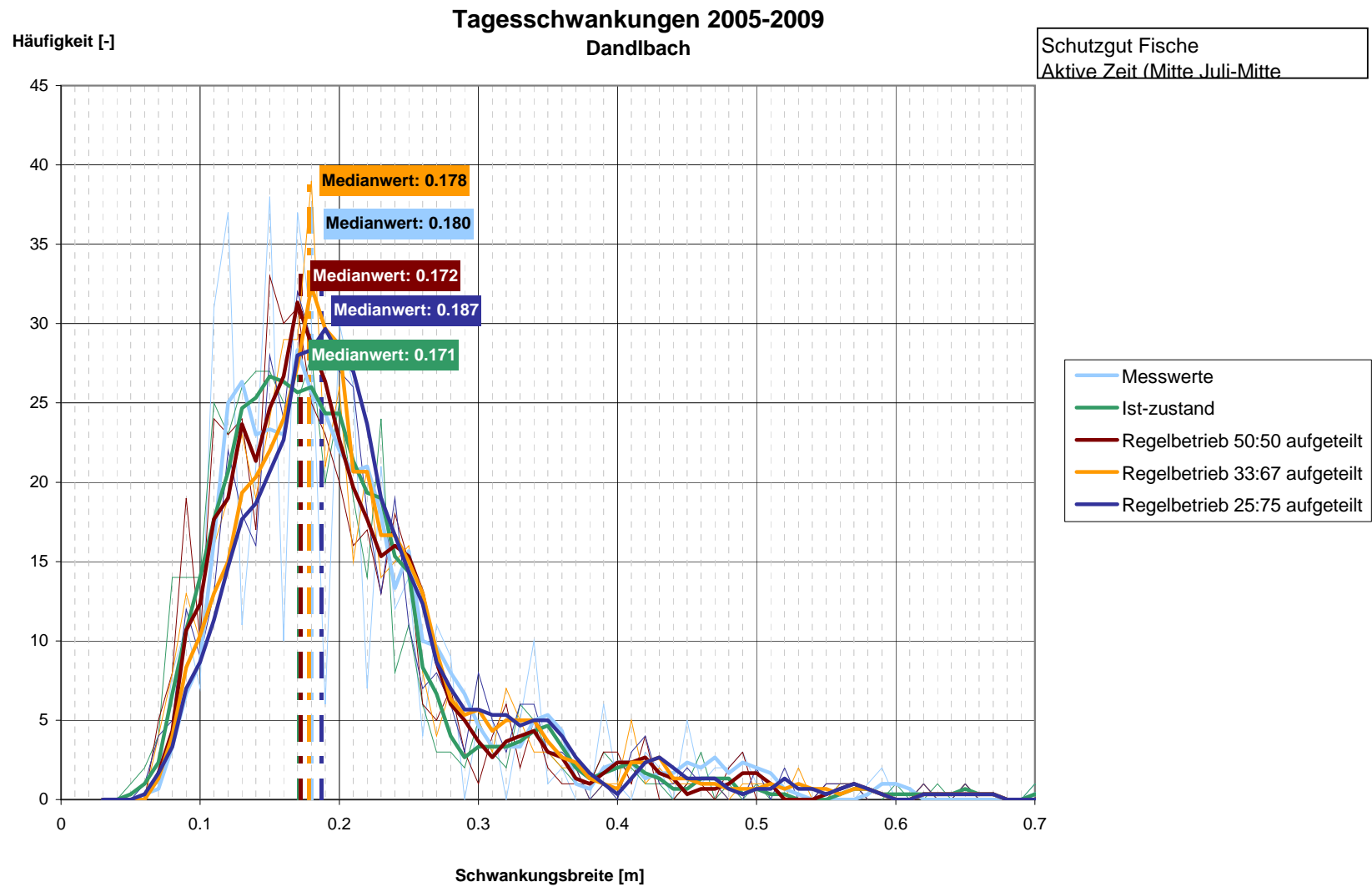


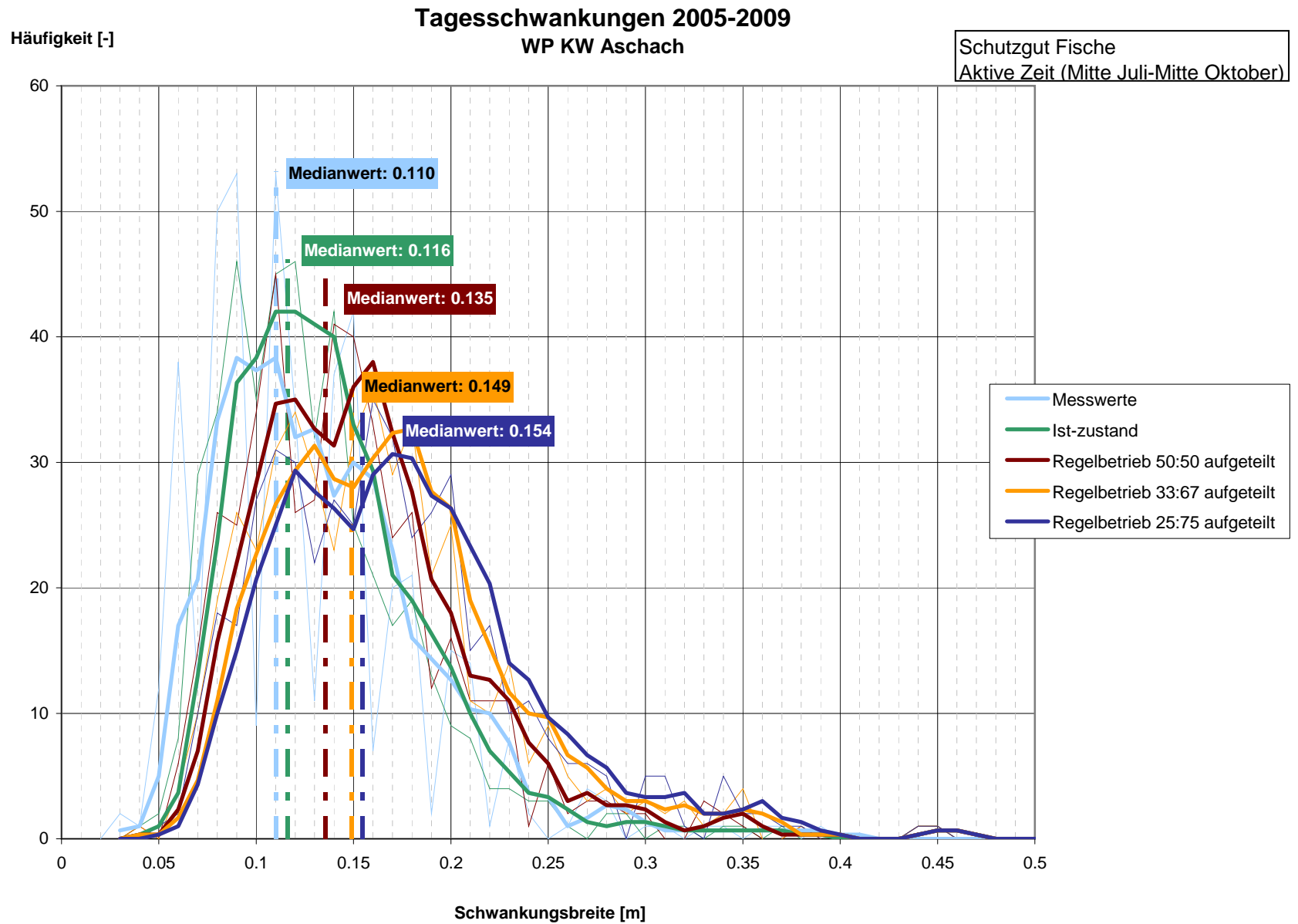


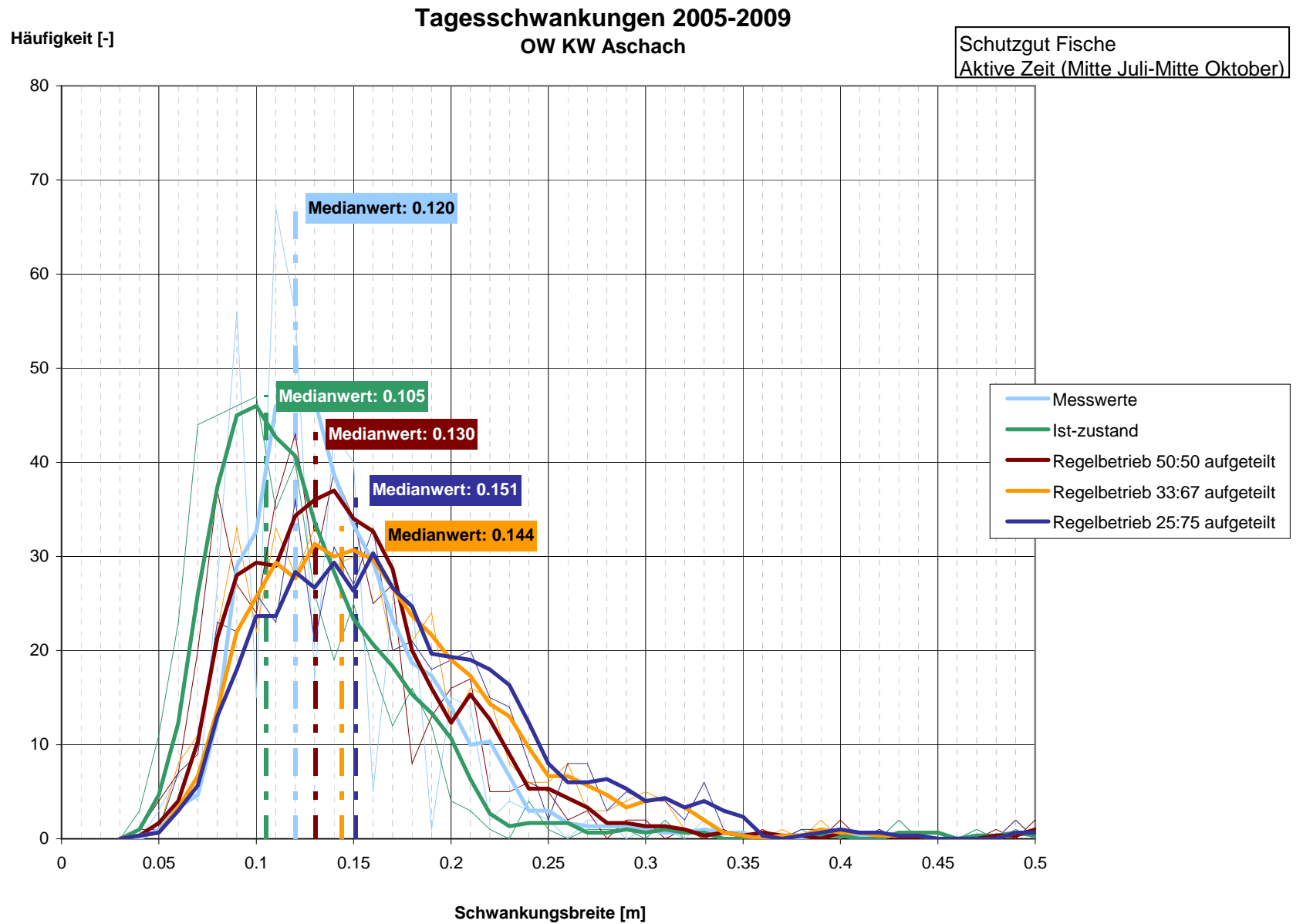


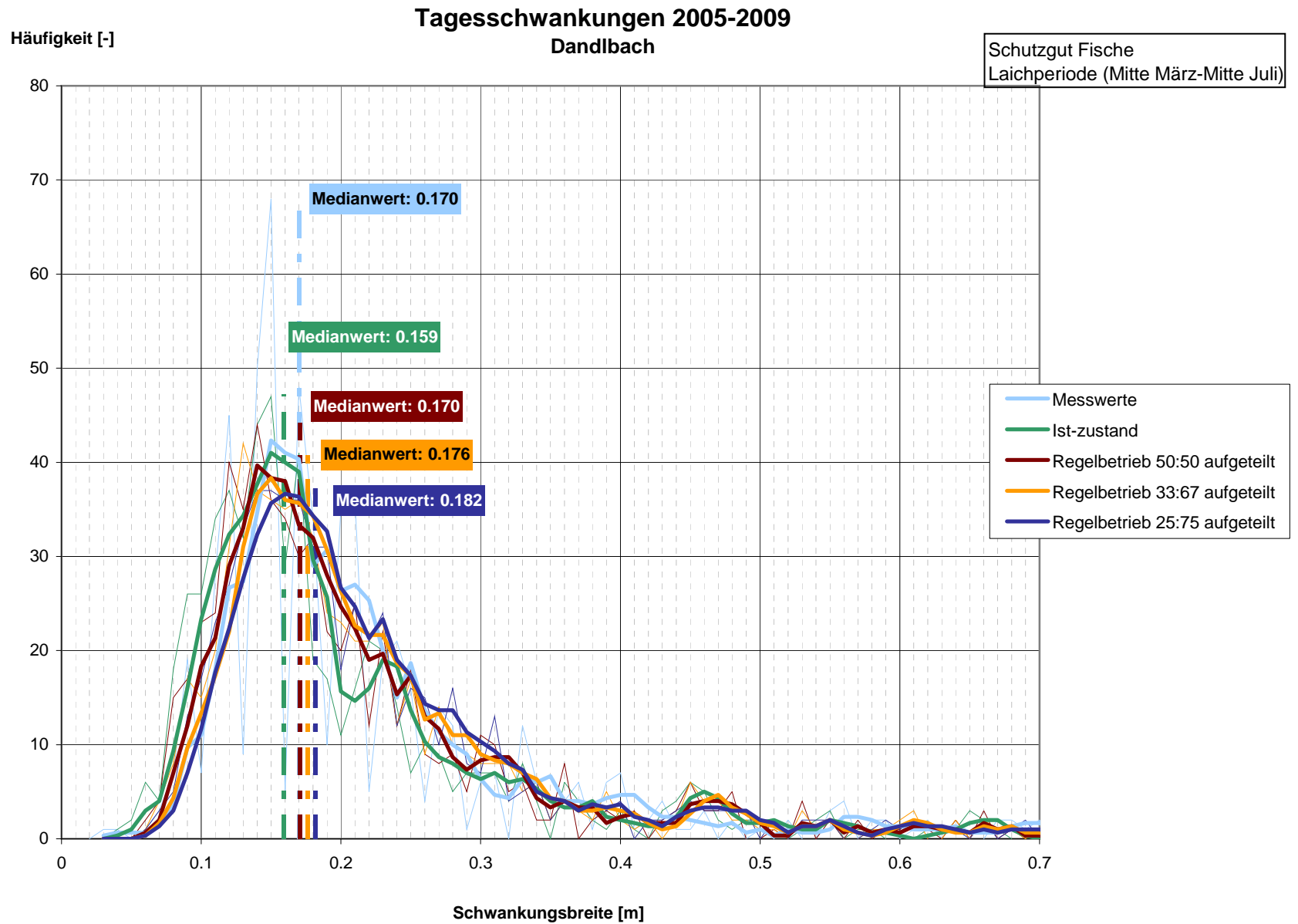


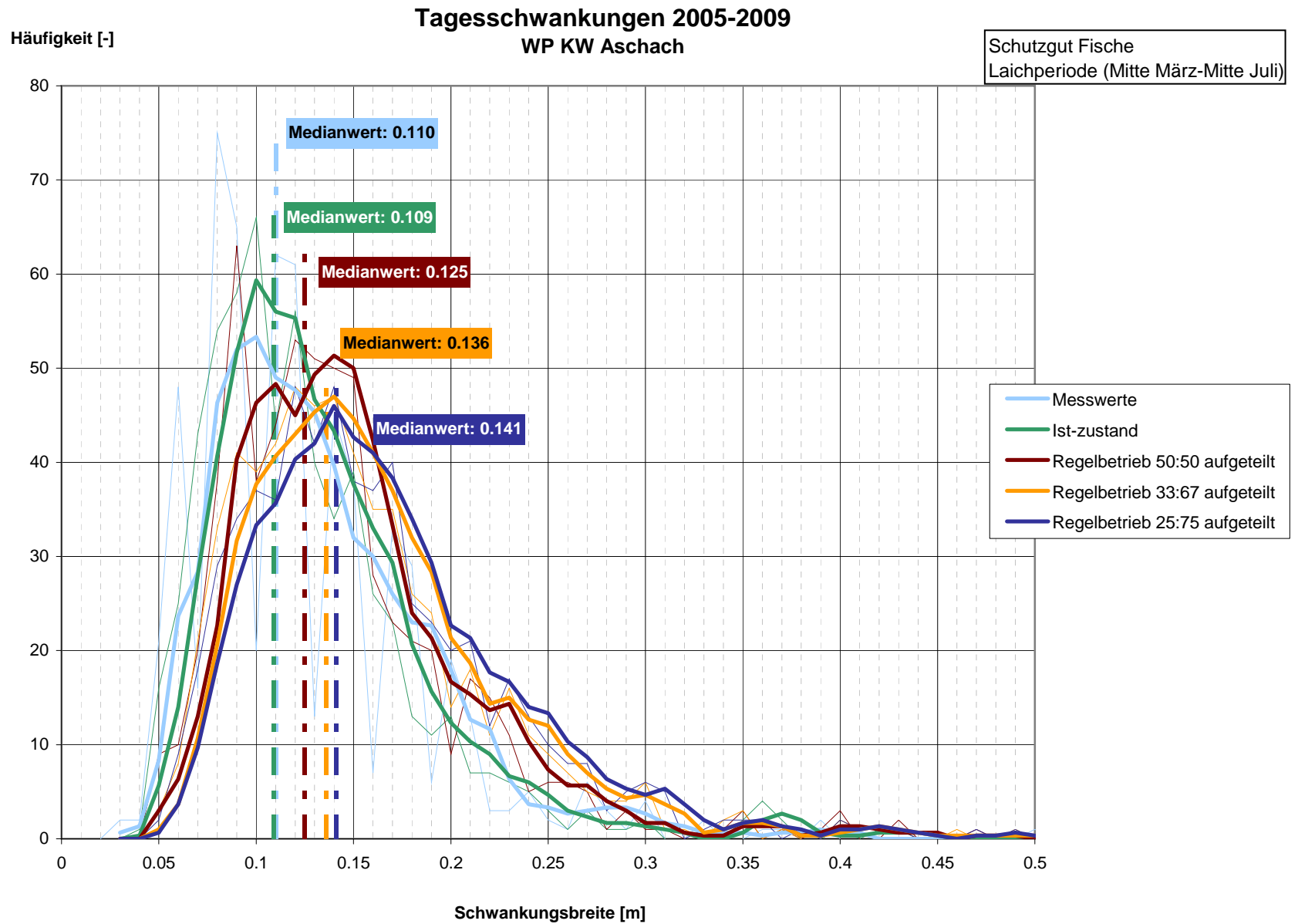


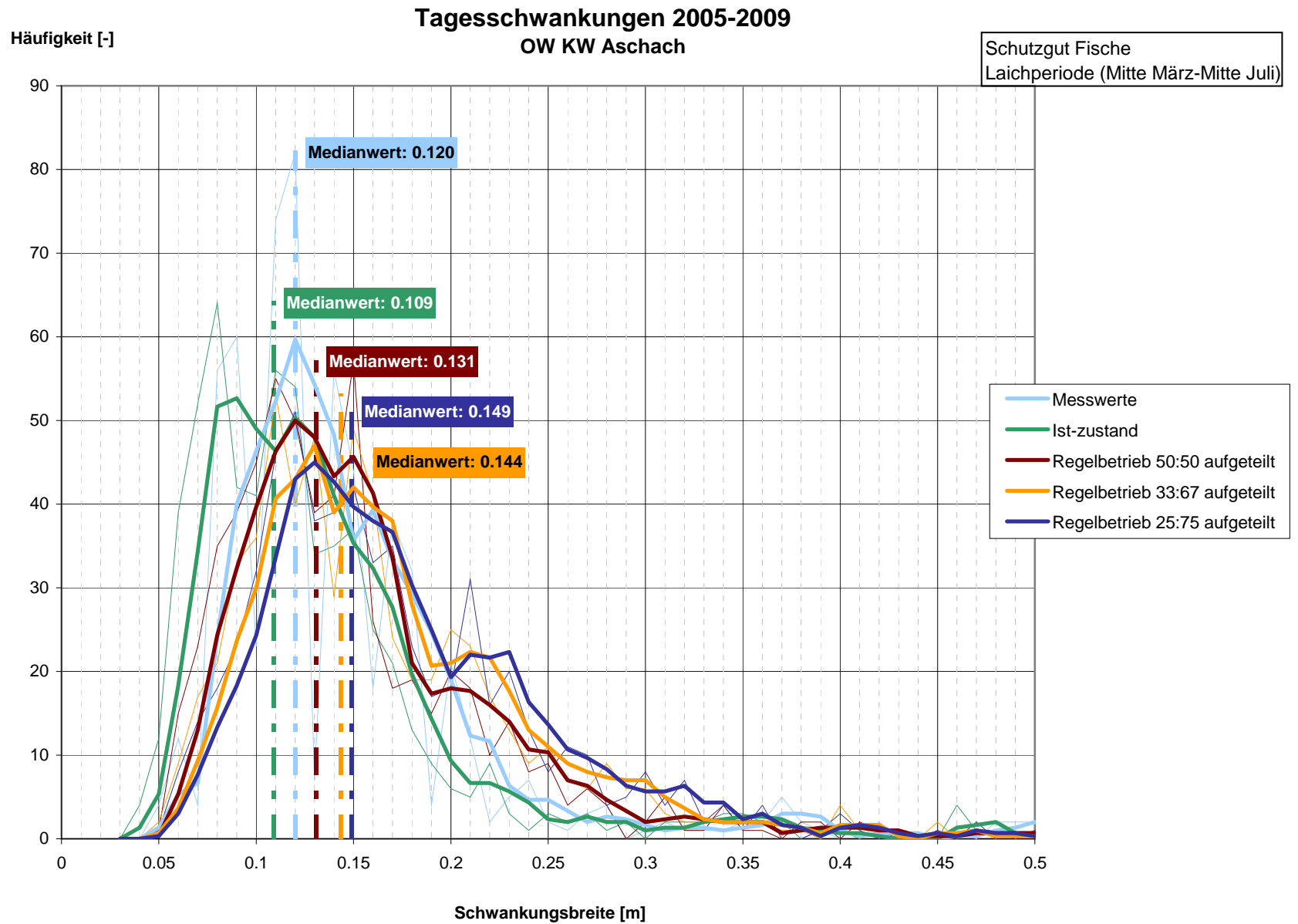


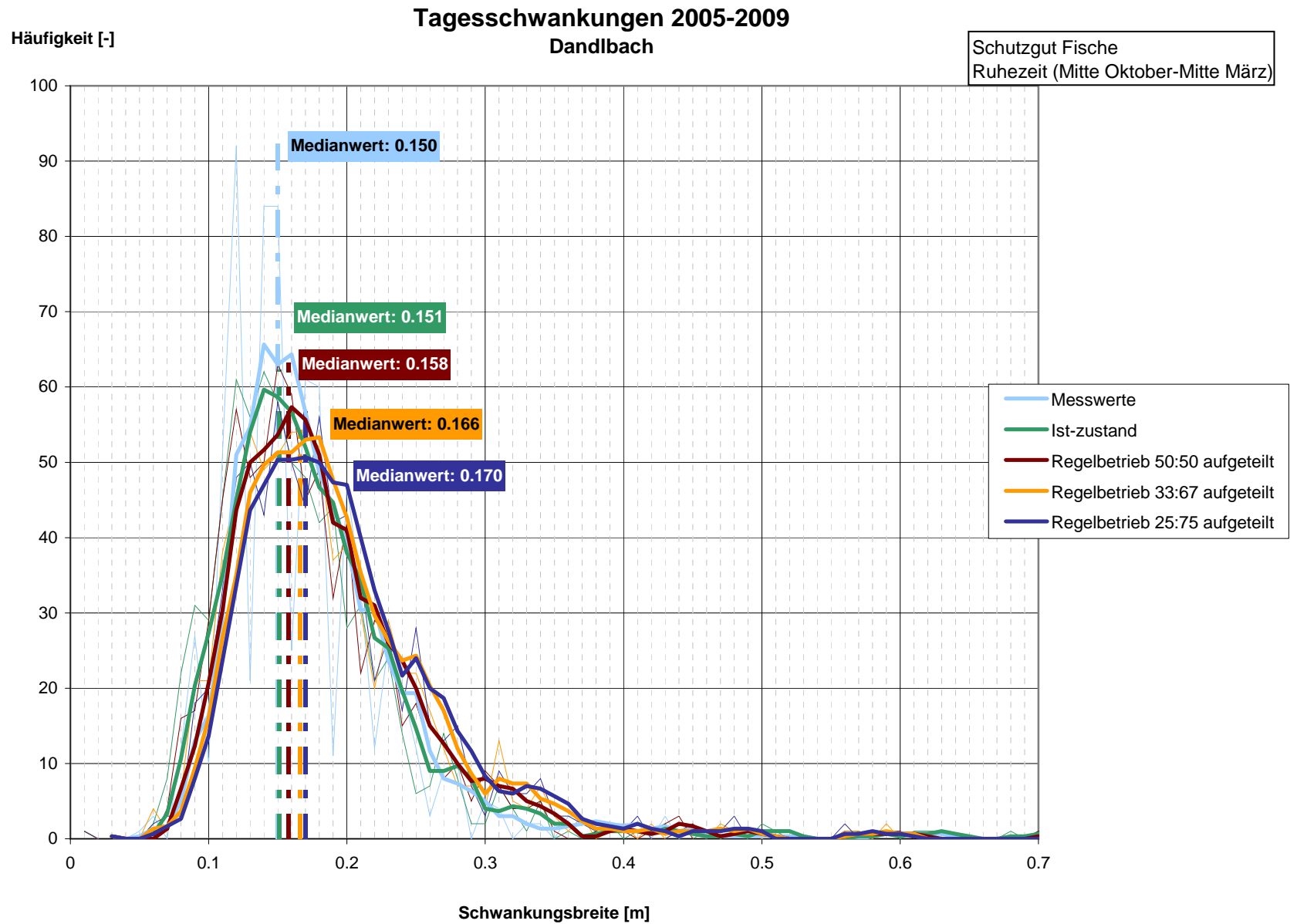


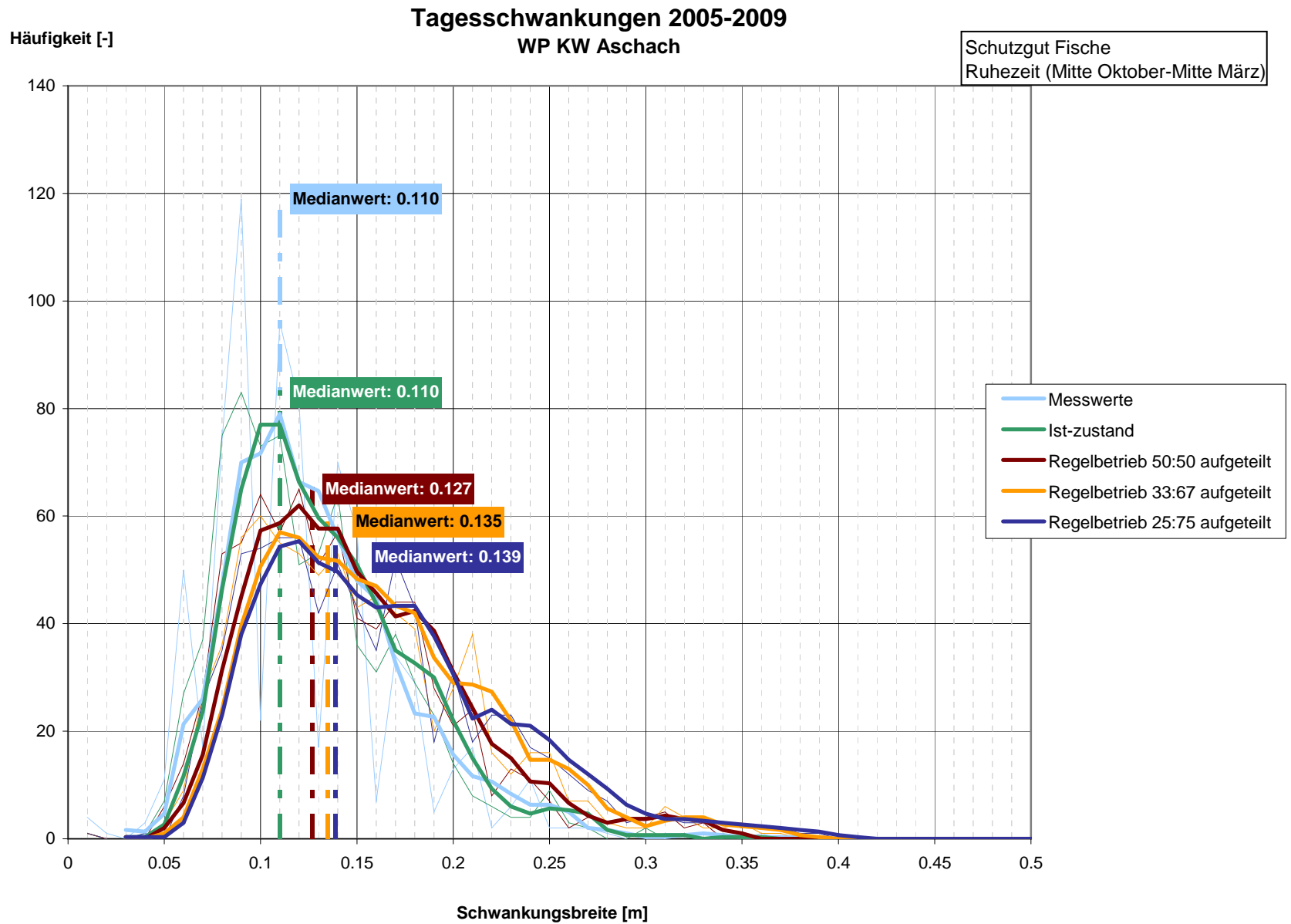




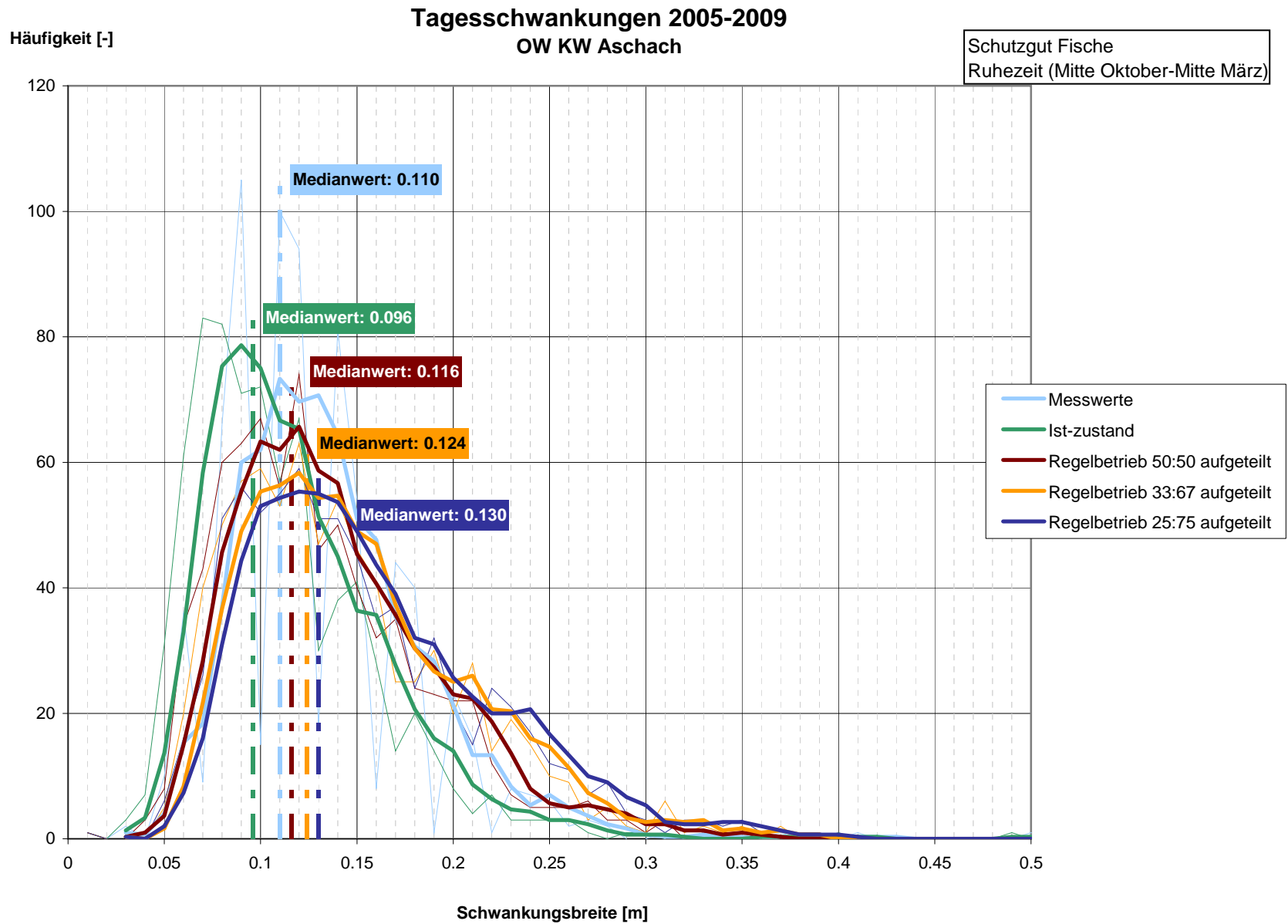


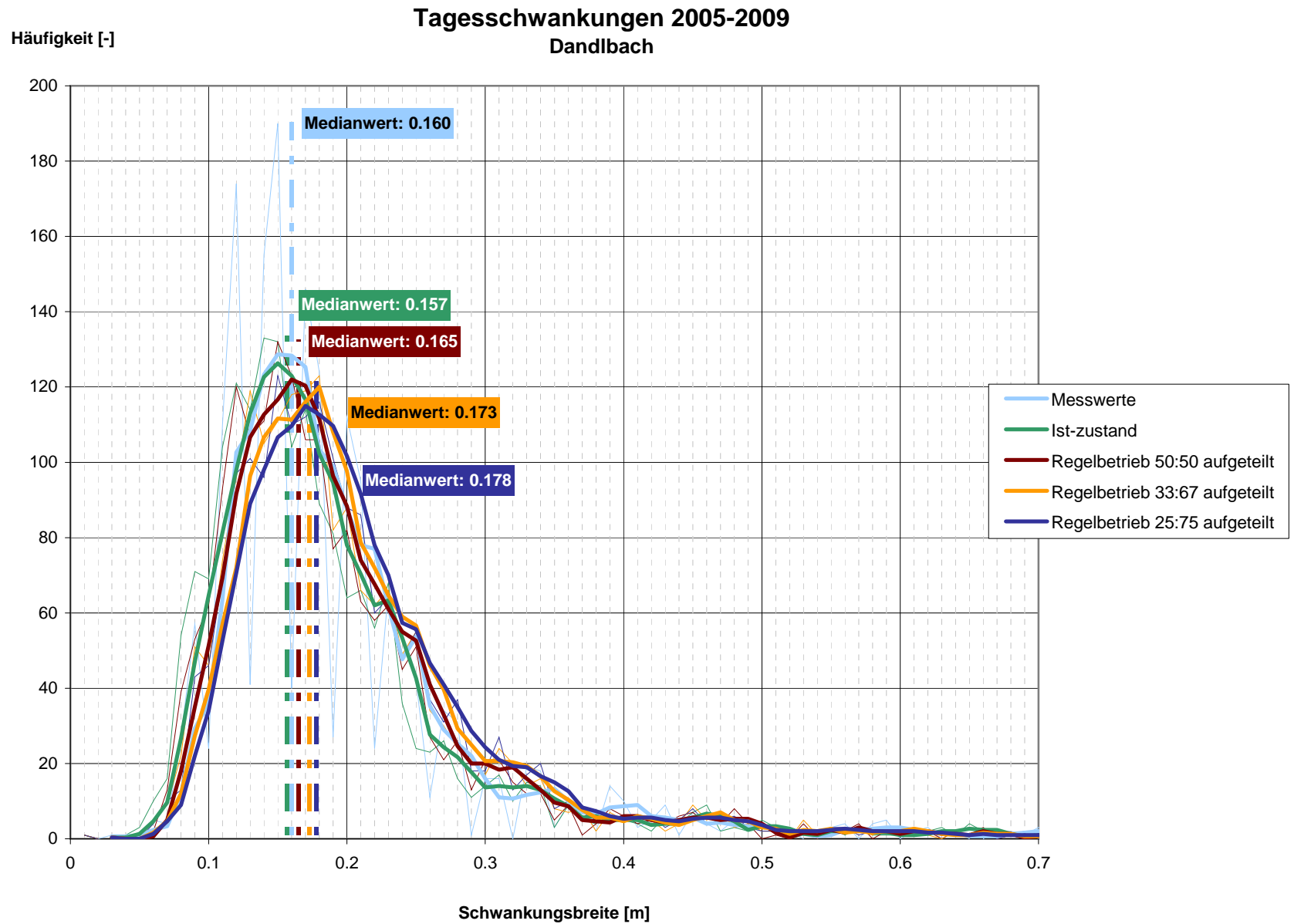


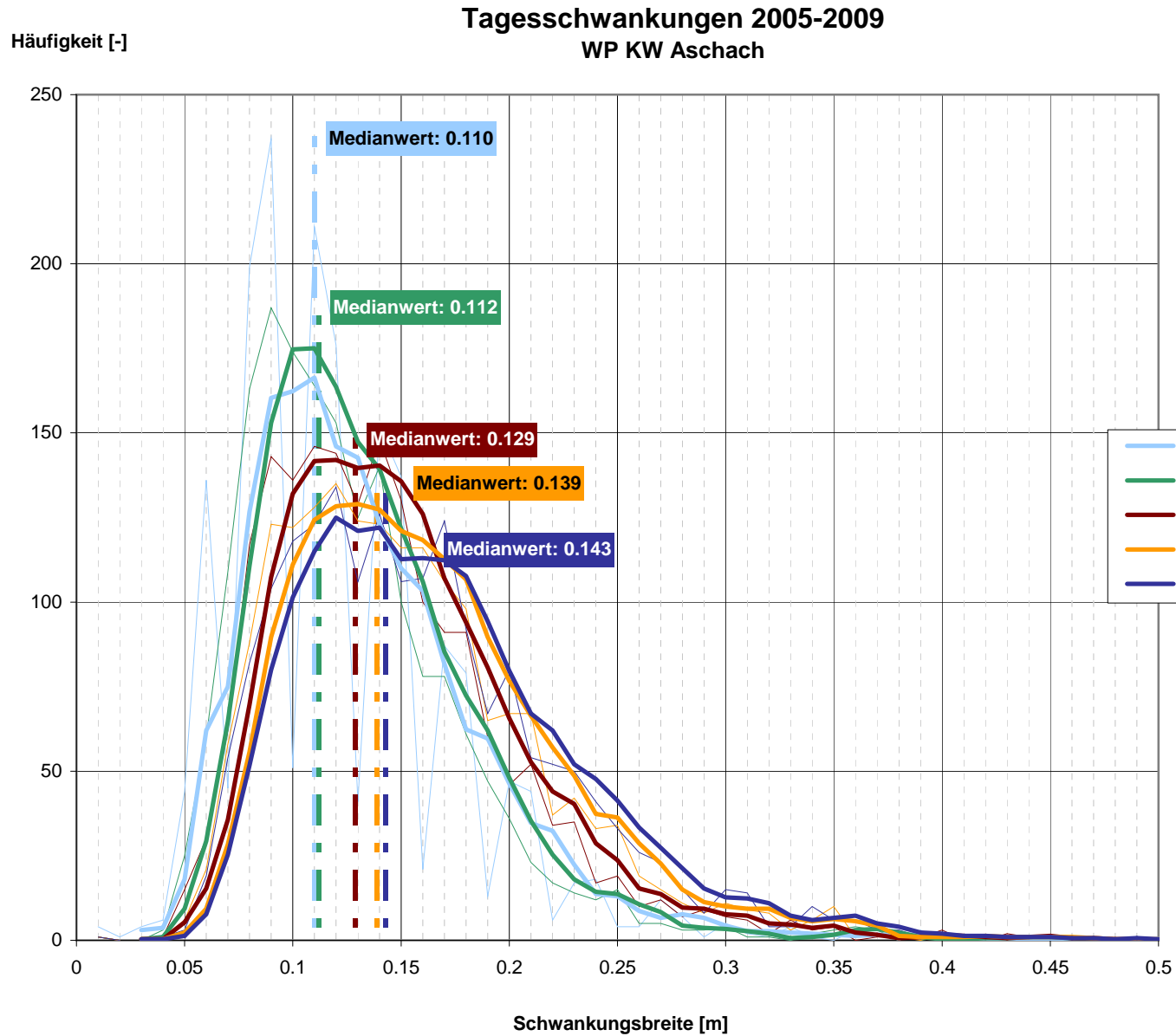












# **Tagesschwankungen 2005-2009** OW KW Aschach

Häufigkeit [-]

