

**DONAU-  
KRAFTWERK  
JOCHENSTEIN**  
AKTIENGESELLSCHAFT

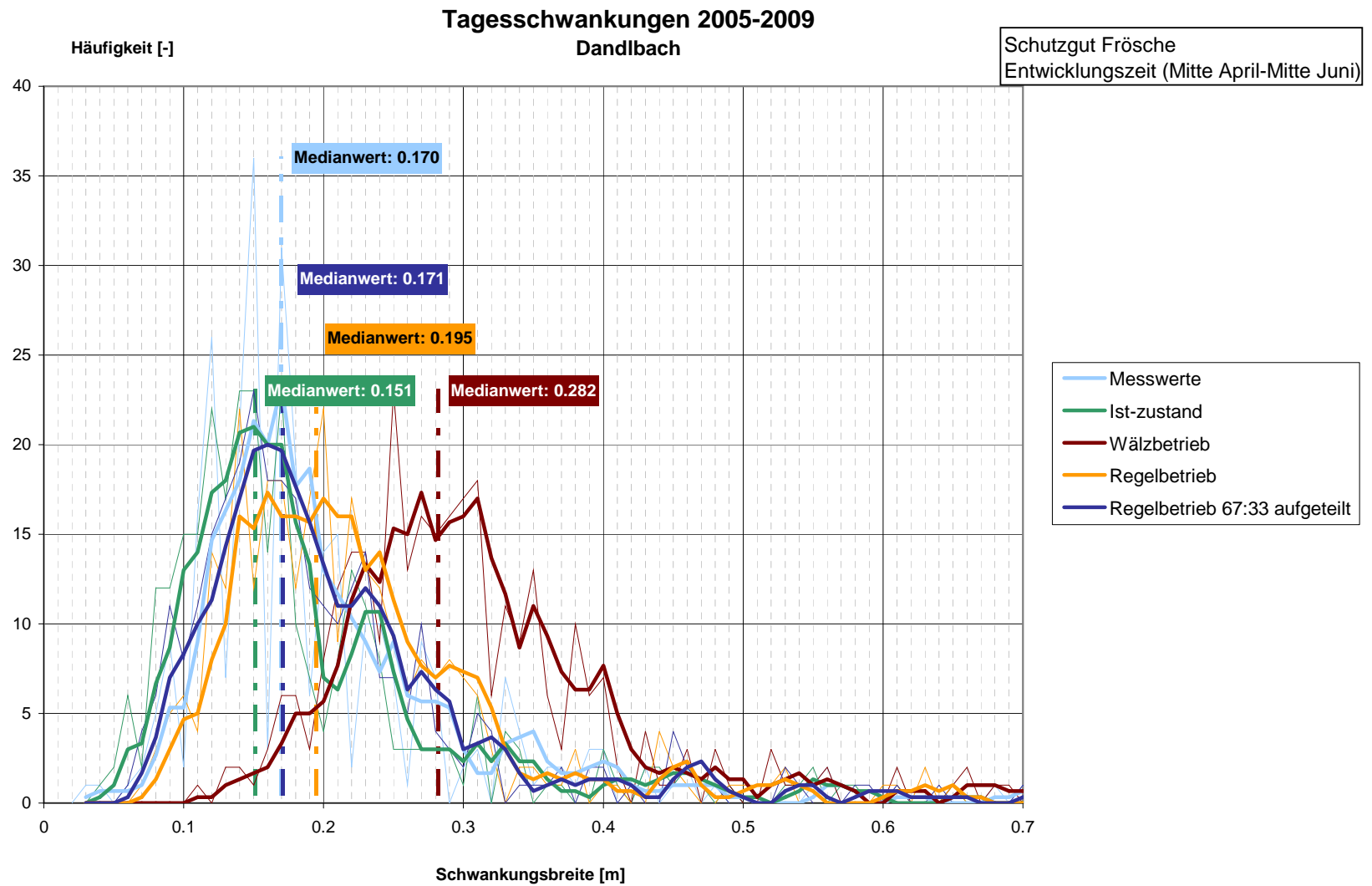
Anlage 1: Wasserspiegelschwankungen Stauraum Aschach, statistische Auswertungen, IST-Zustand Wälzbetrieb, Regelbetrieb 100:0 und Regelbetrieb 67:33

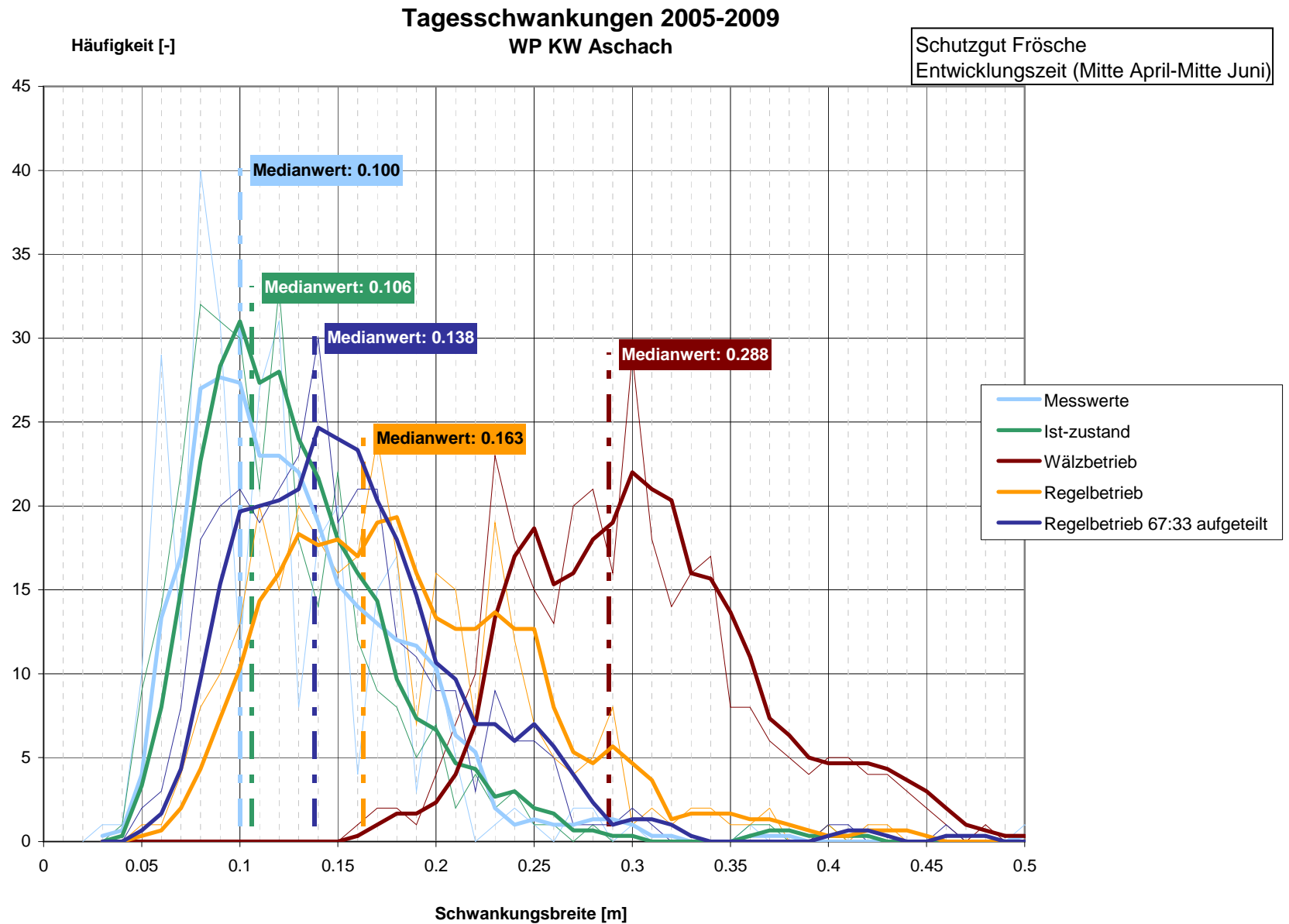


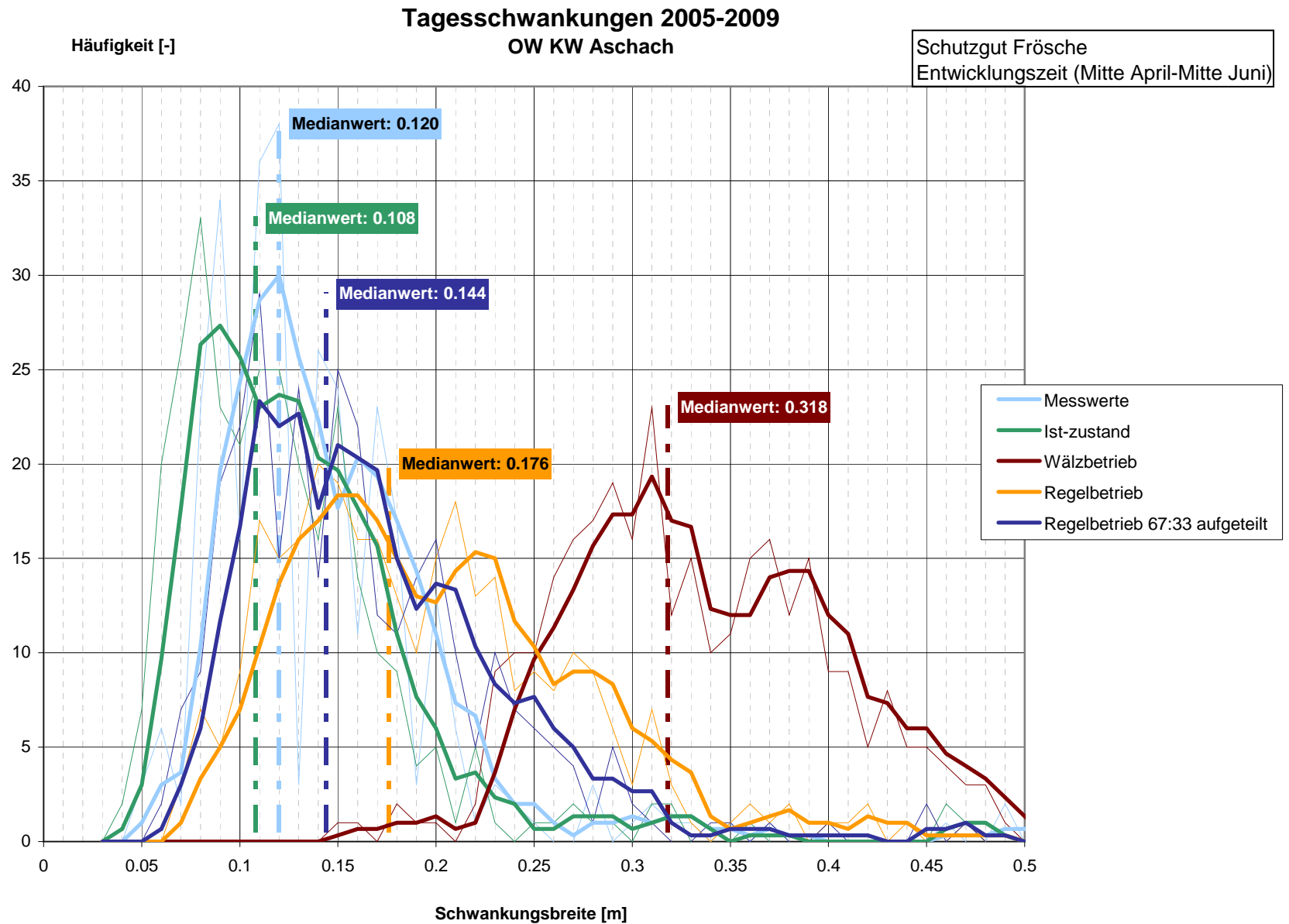
Erstellt	Verbund / EBN	H. Grüner	26.3.2012
Geprüft	DKJ / ES-R	D. Mayr	26.3.2012
Freigegeben	DKJ / ES-R	D. Mayr	27.3.2012
	Unternehmen / Abteilung	Vorname Nachname	Datum

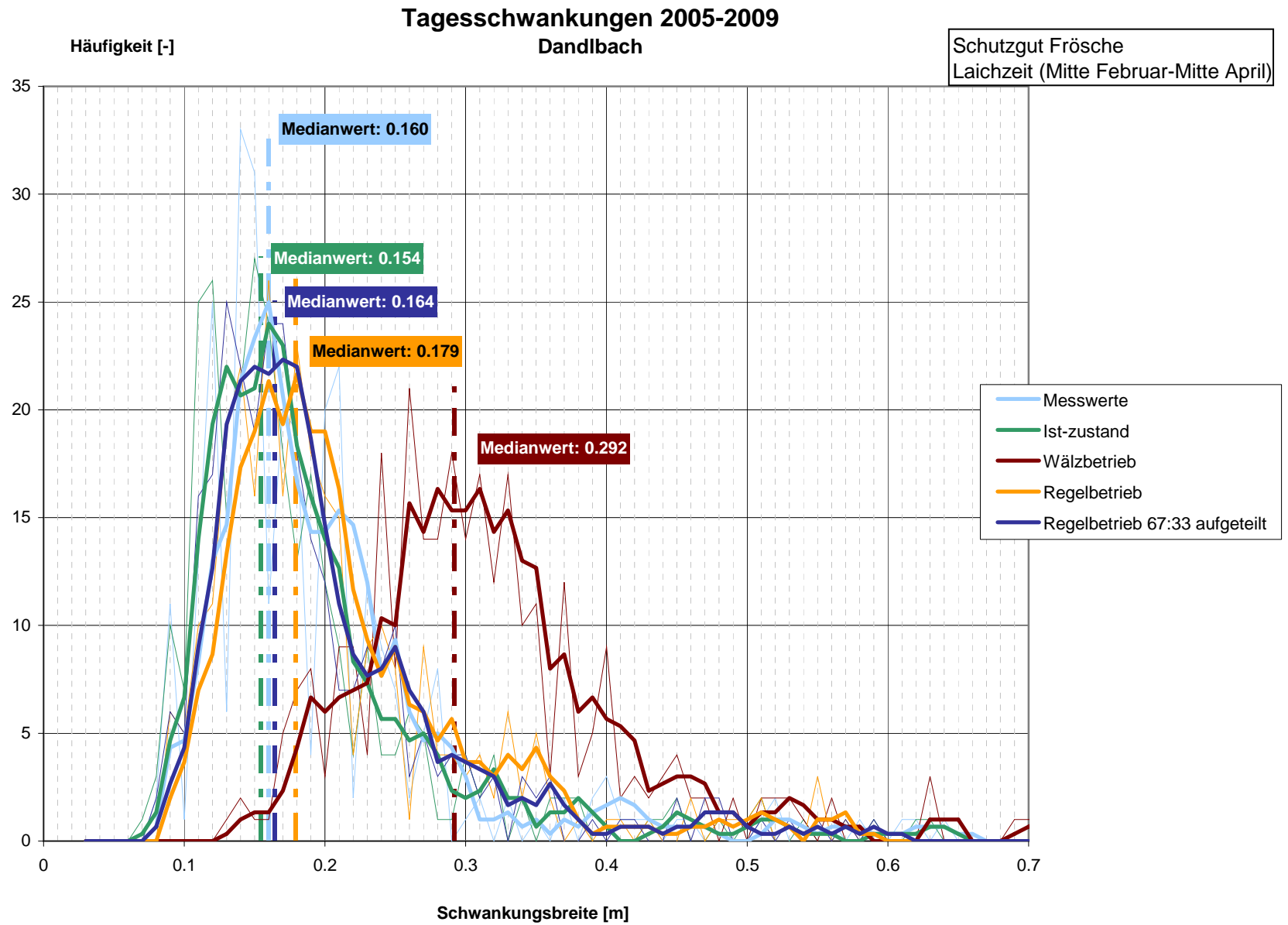
[illegible]

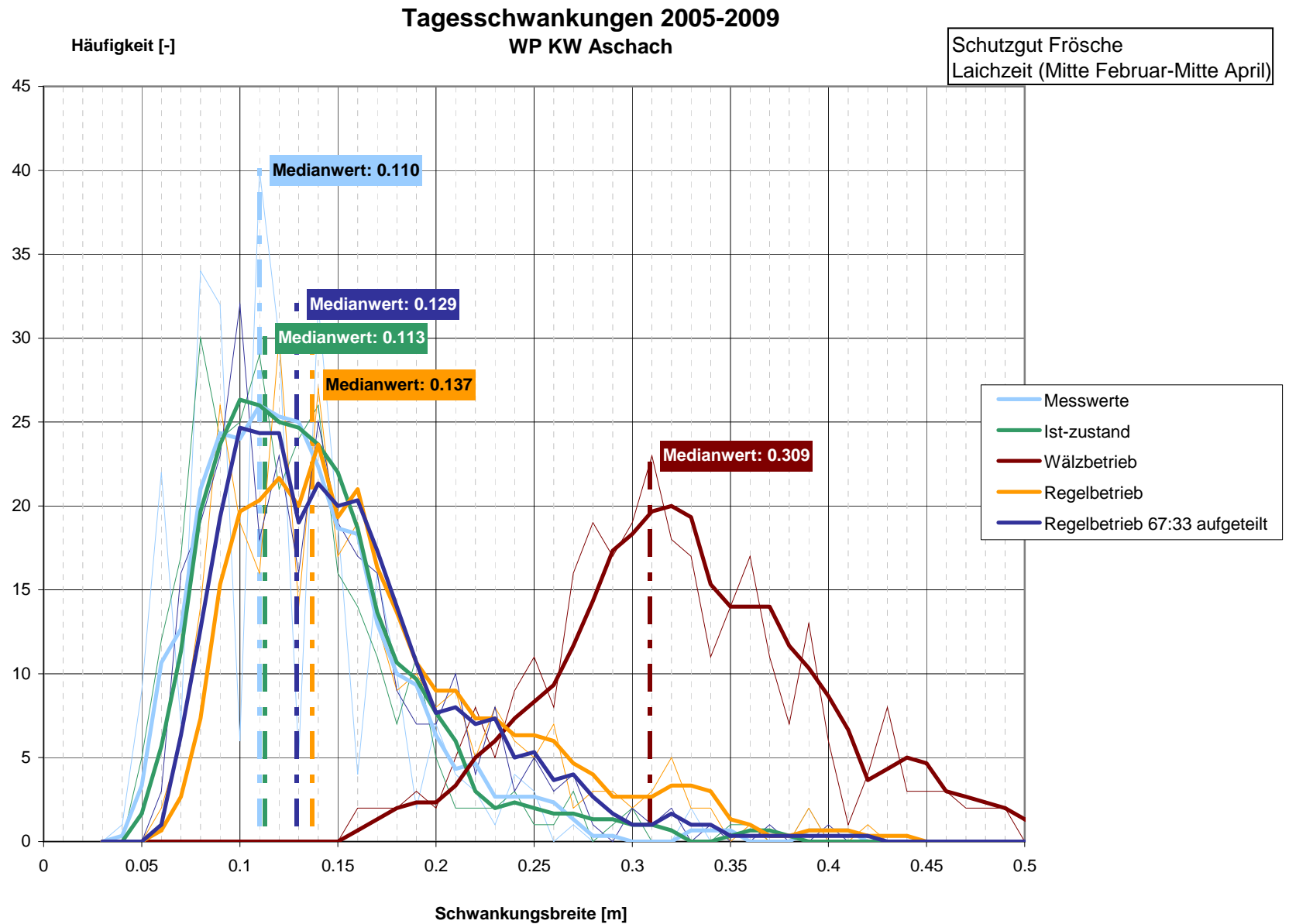


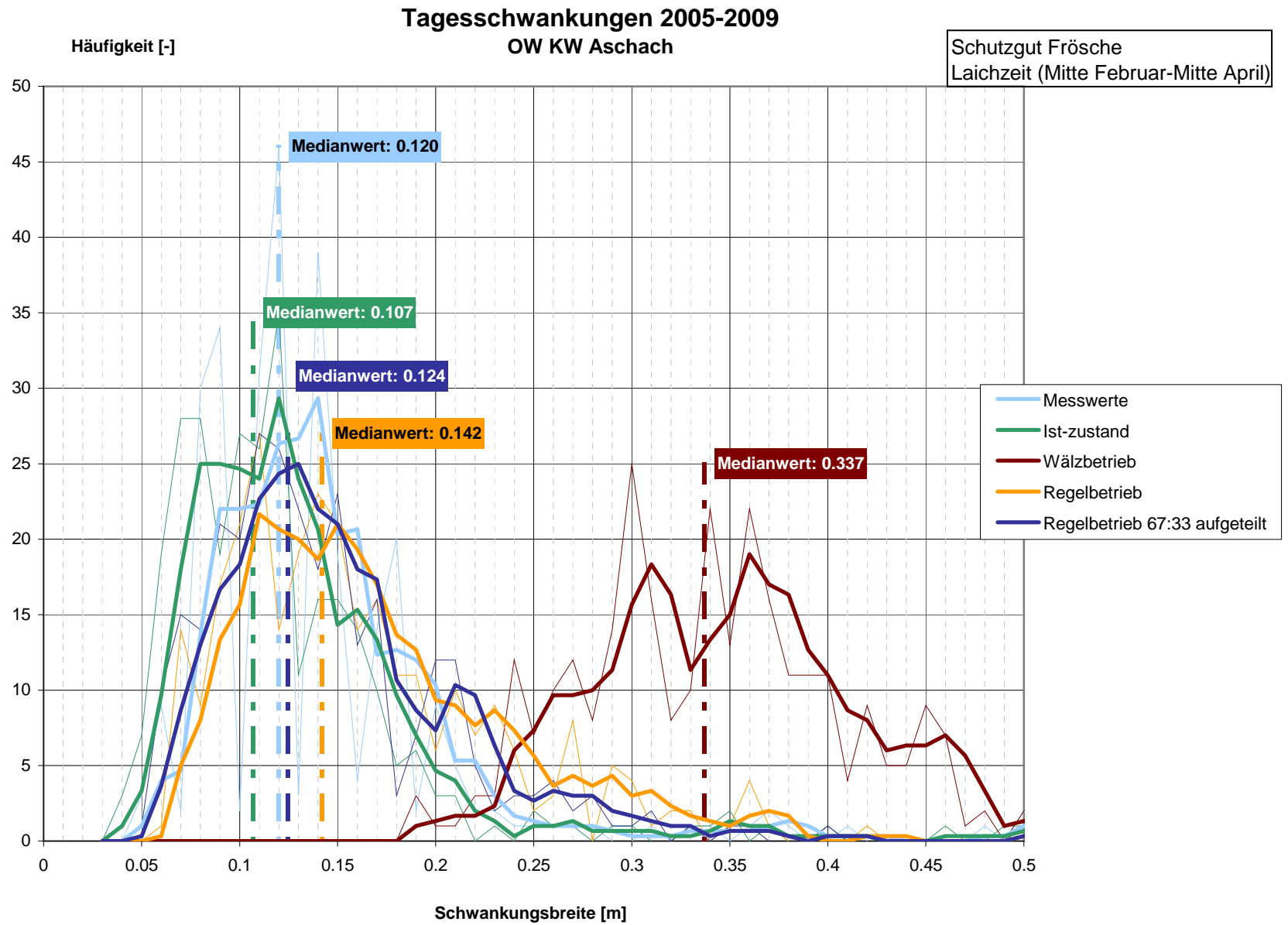




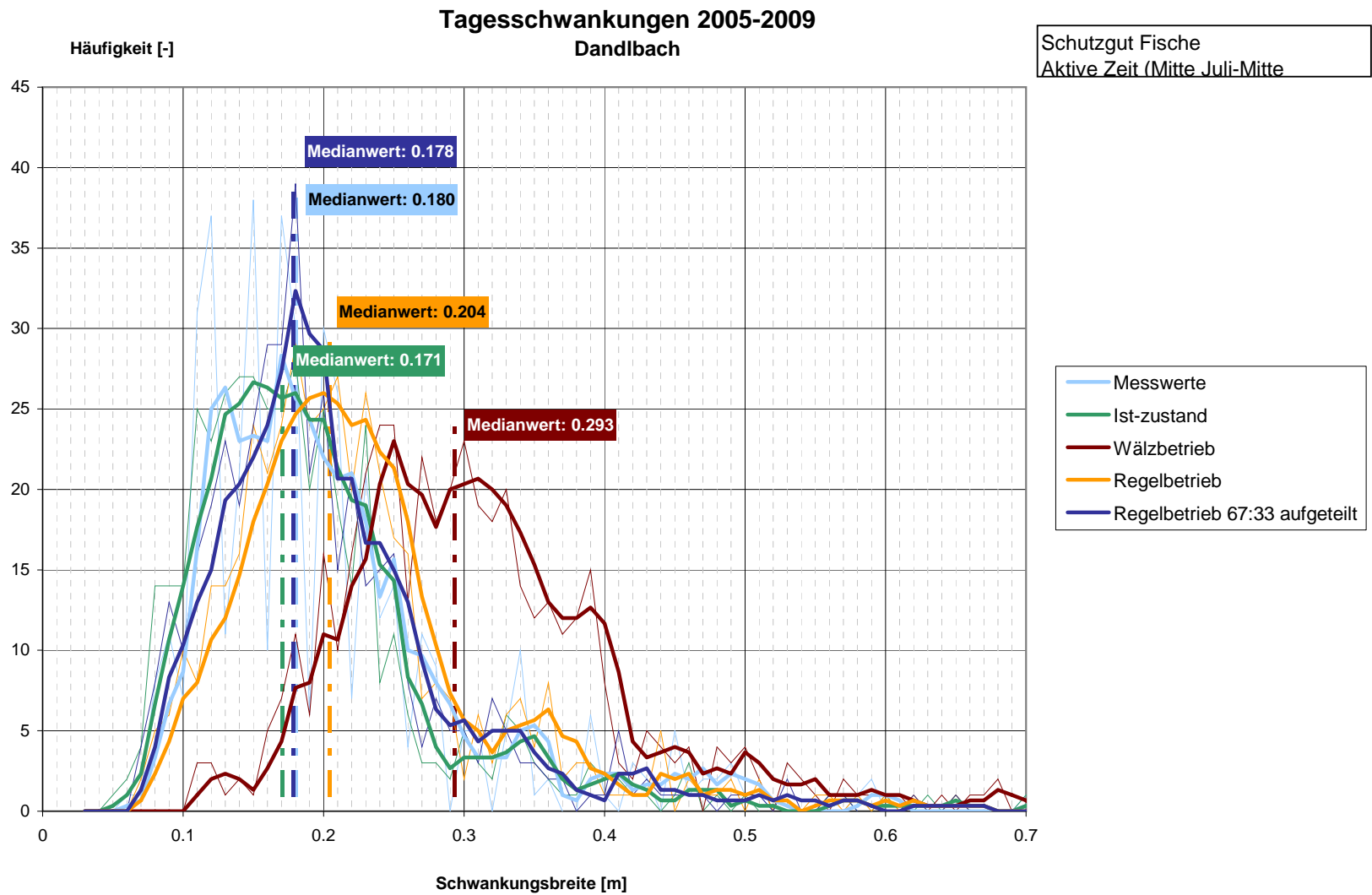


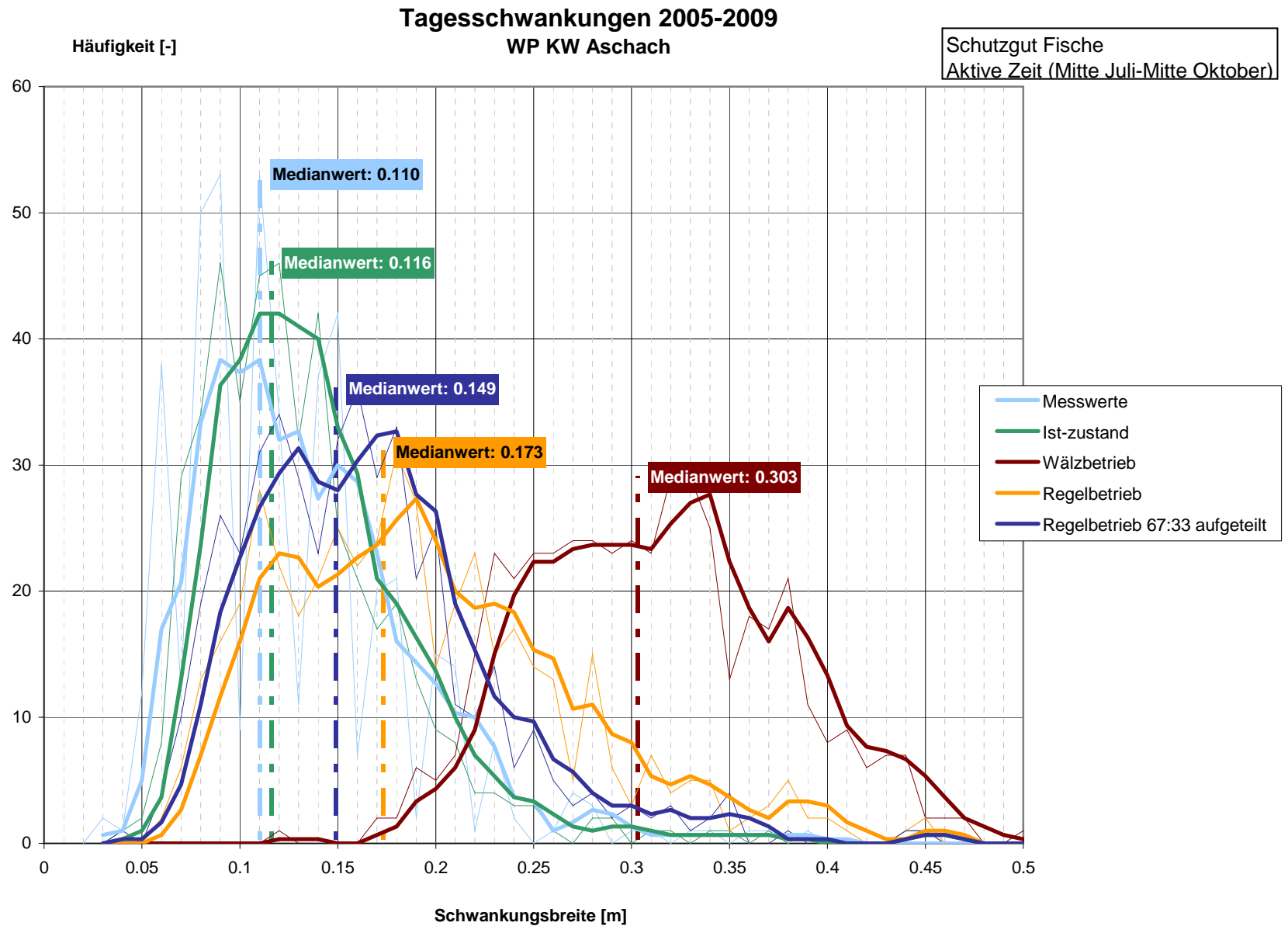


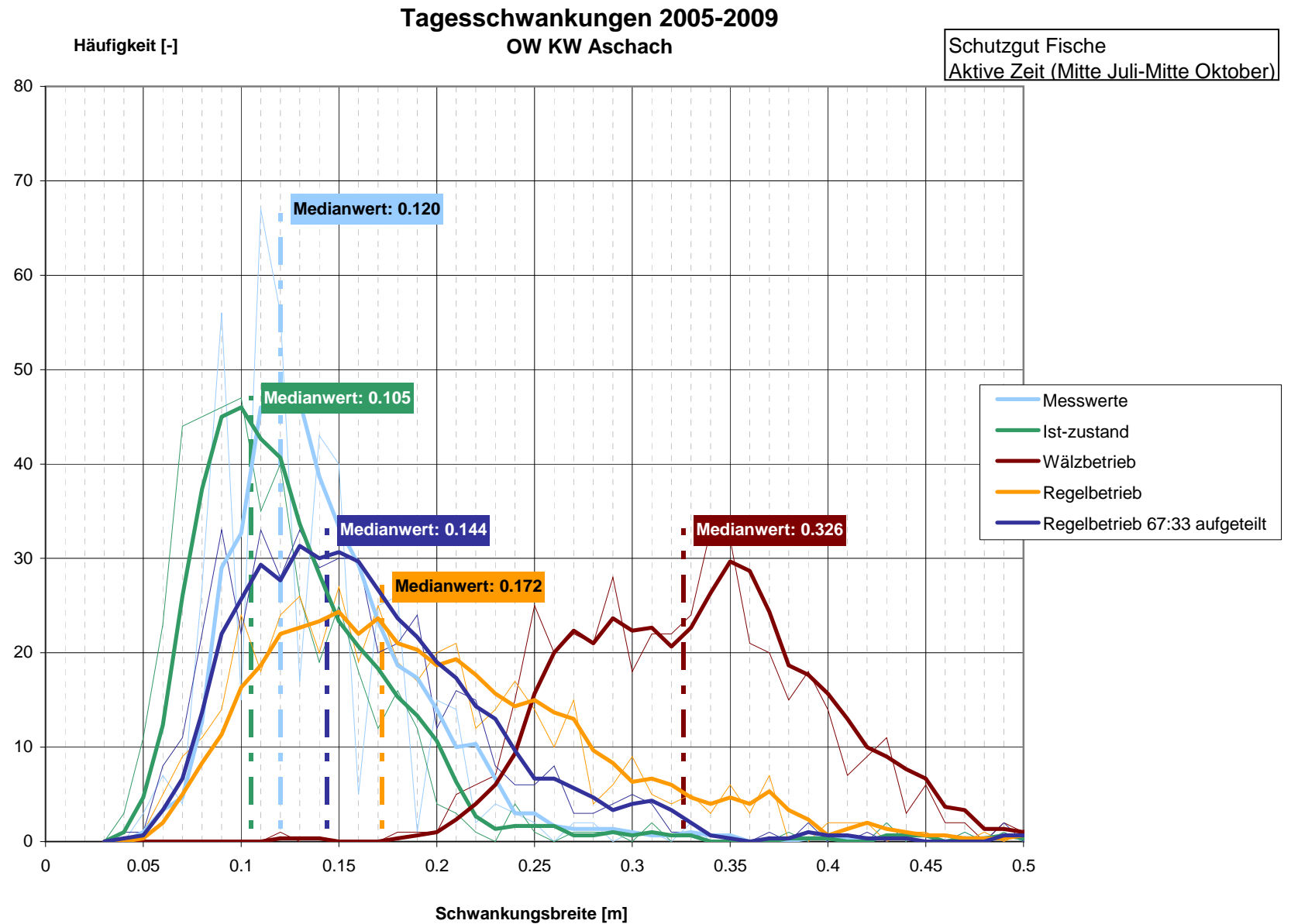


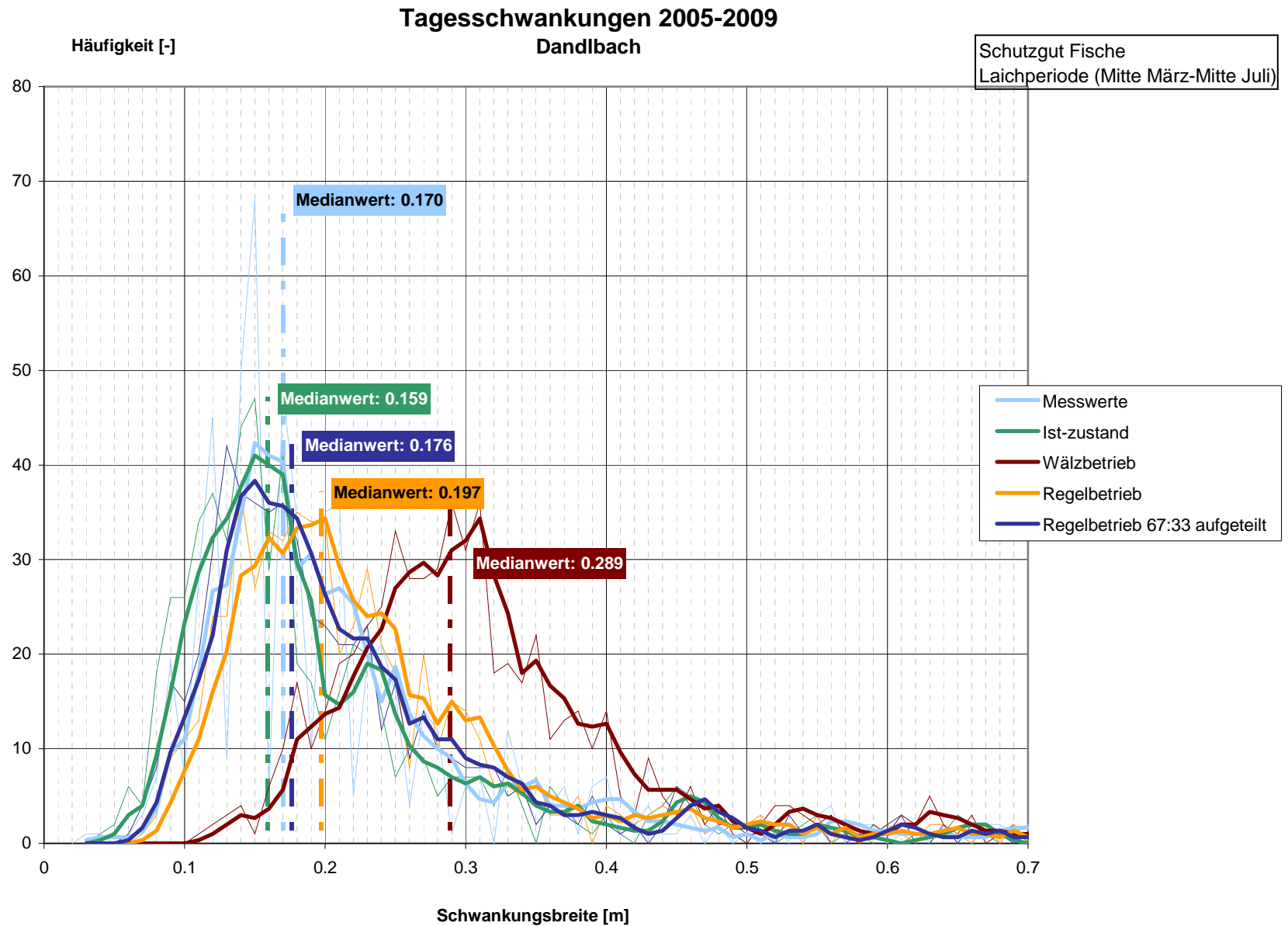


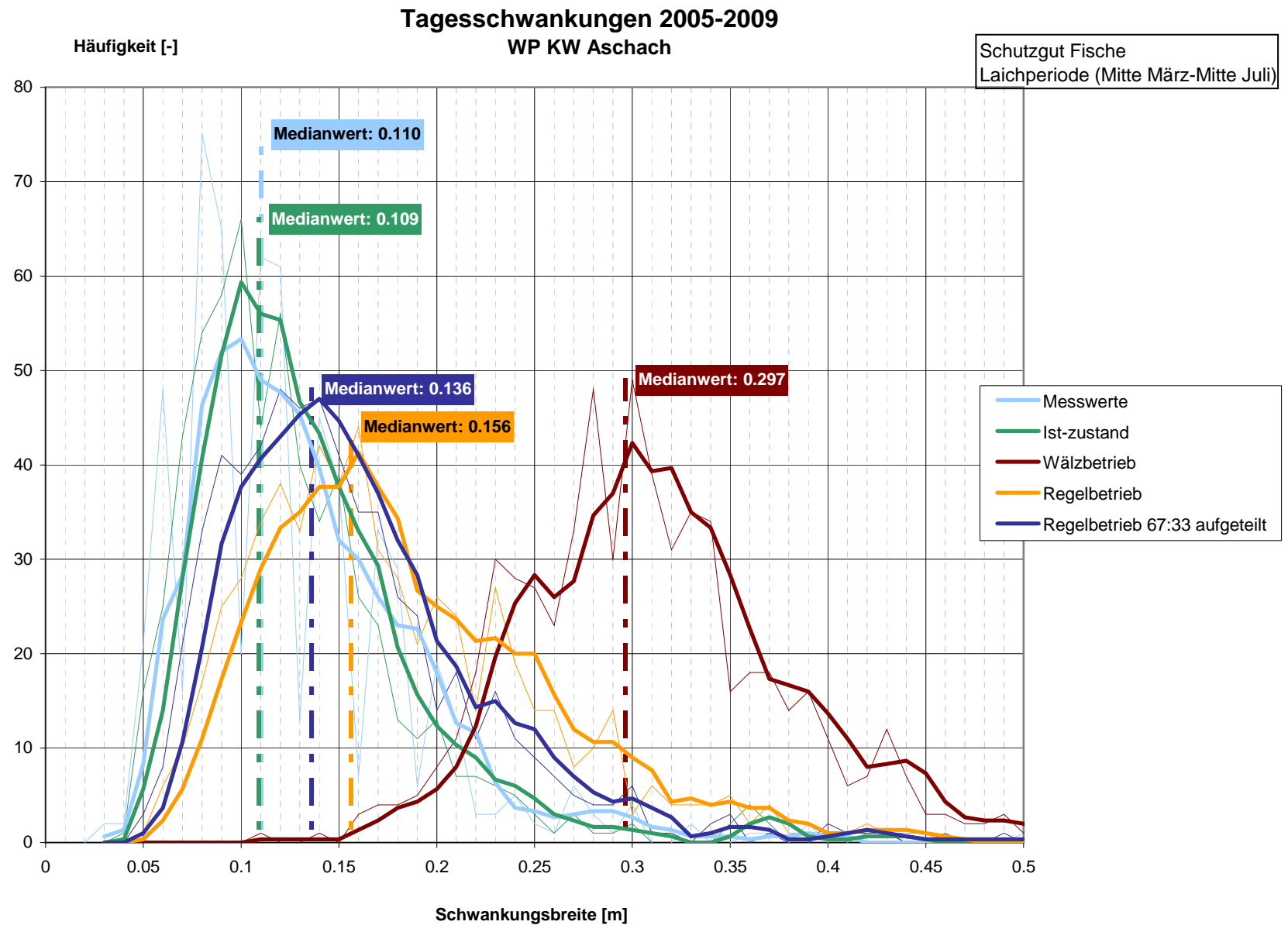


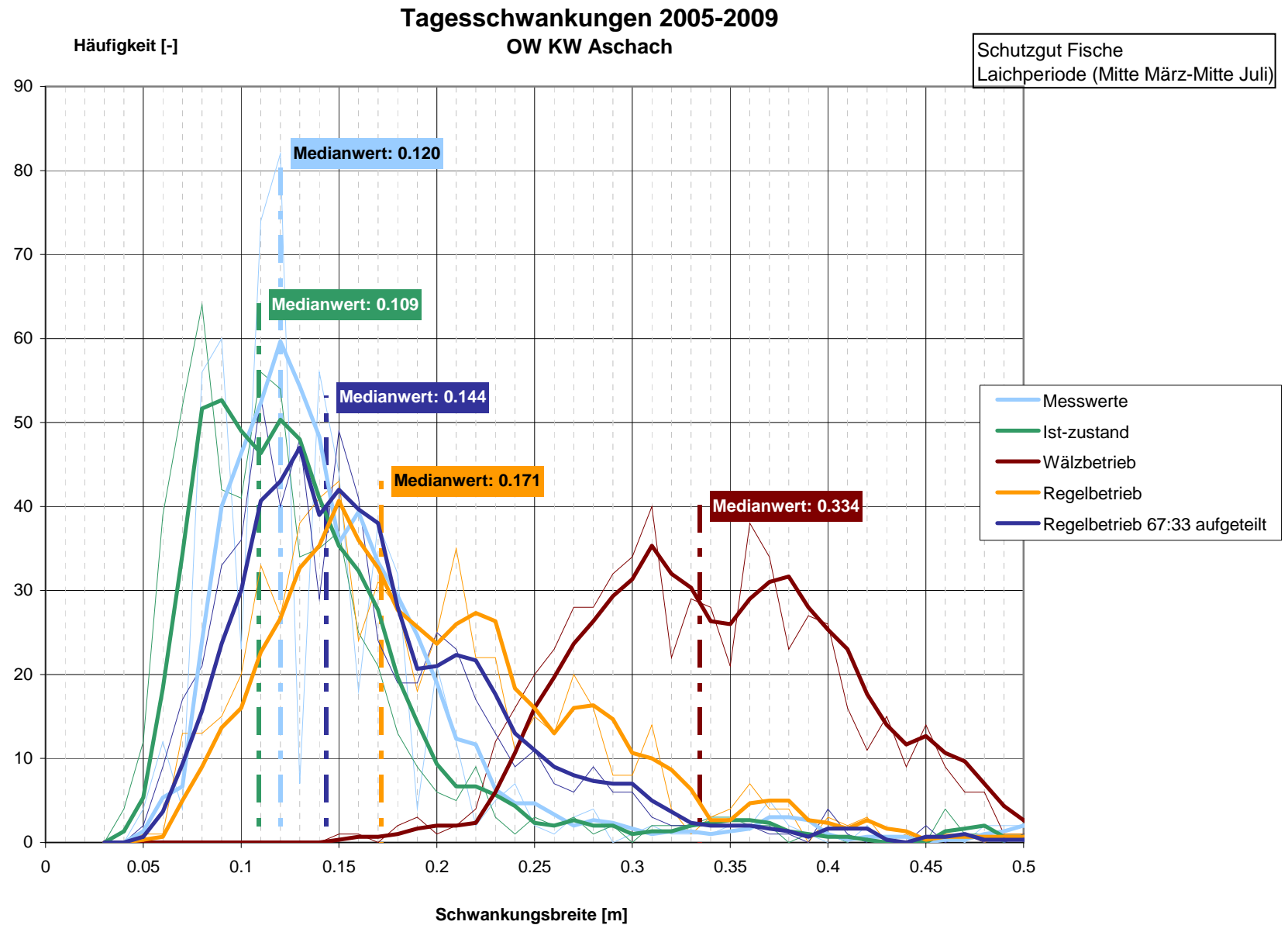


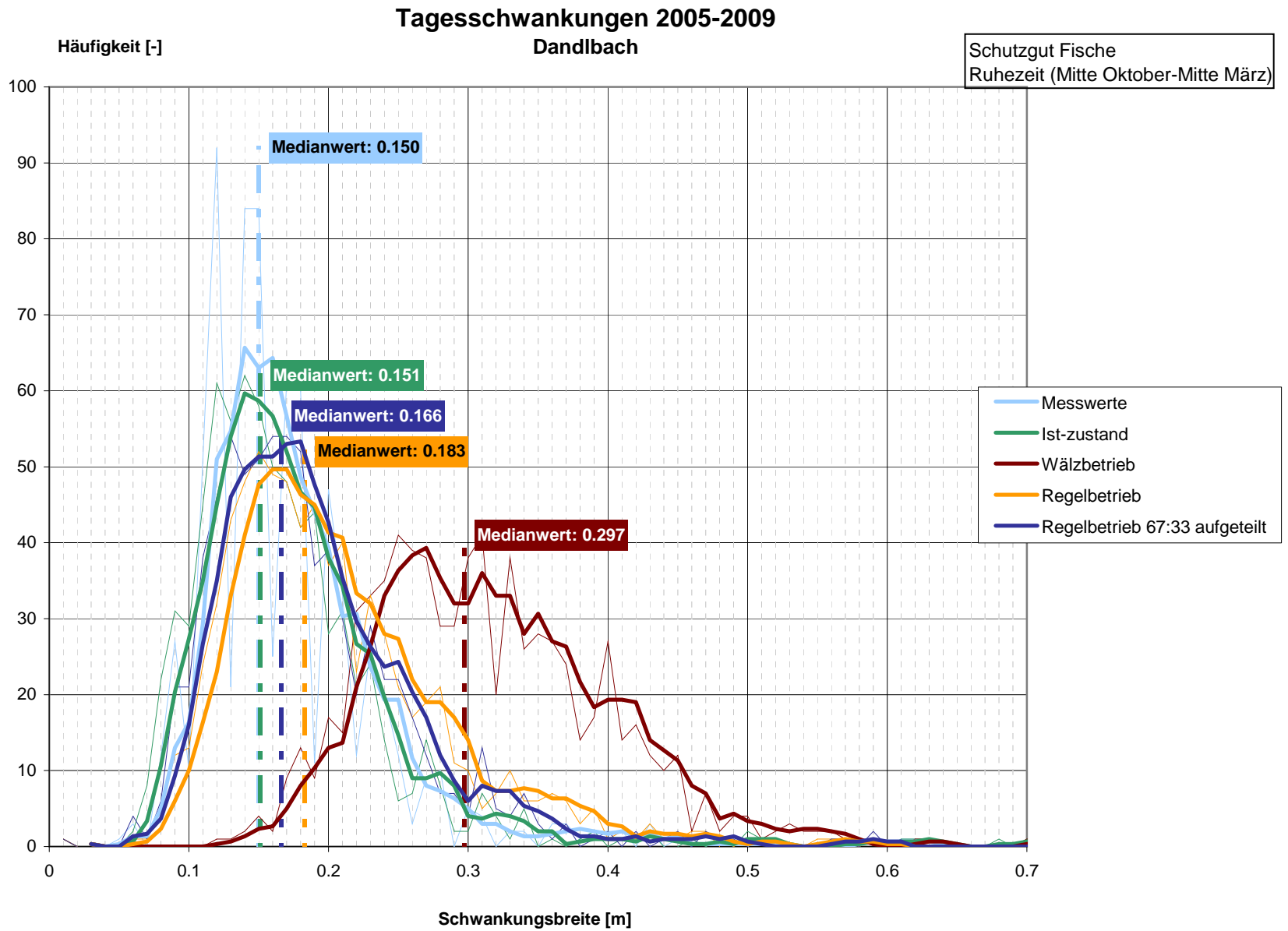


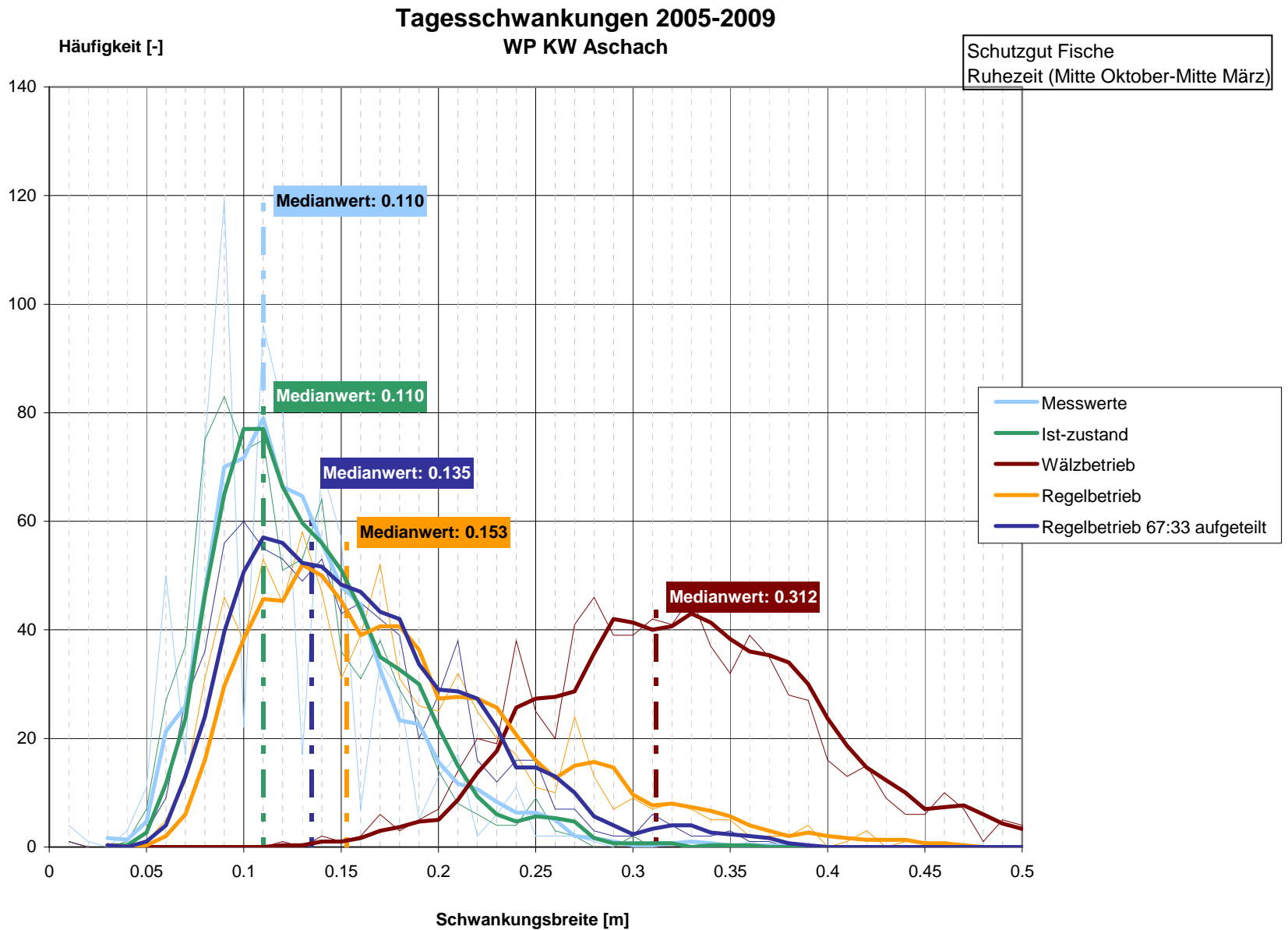




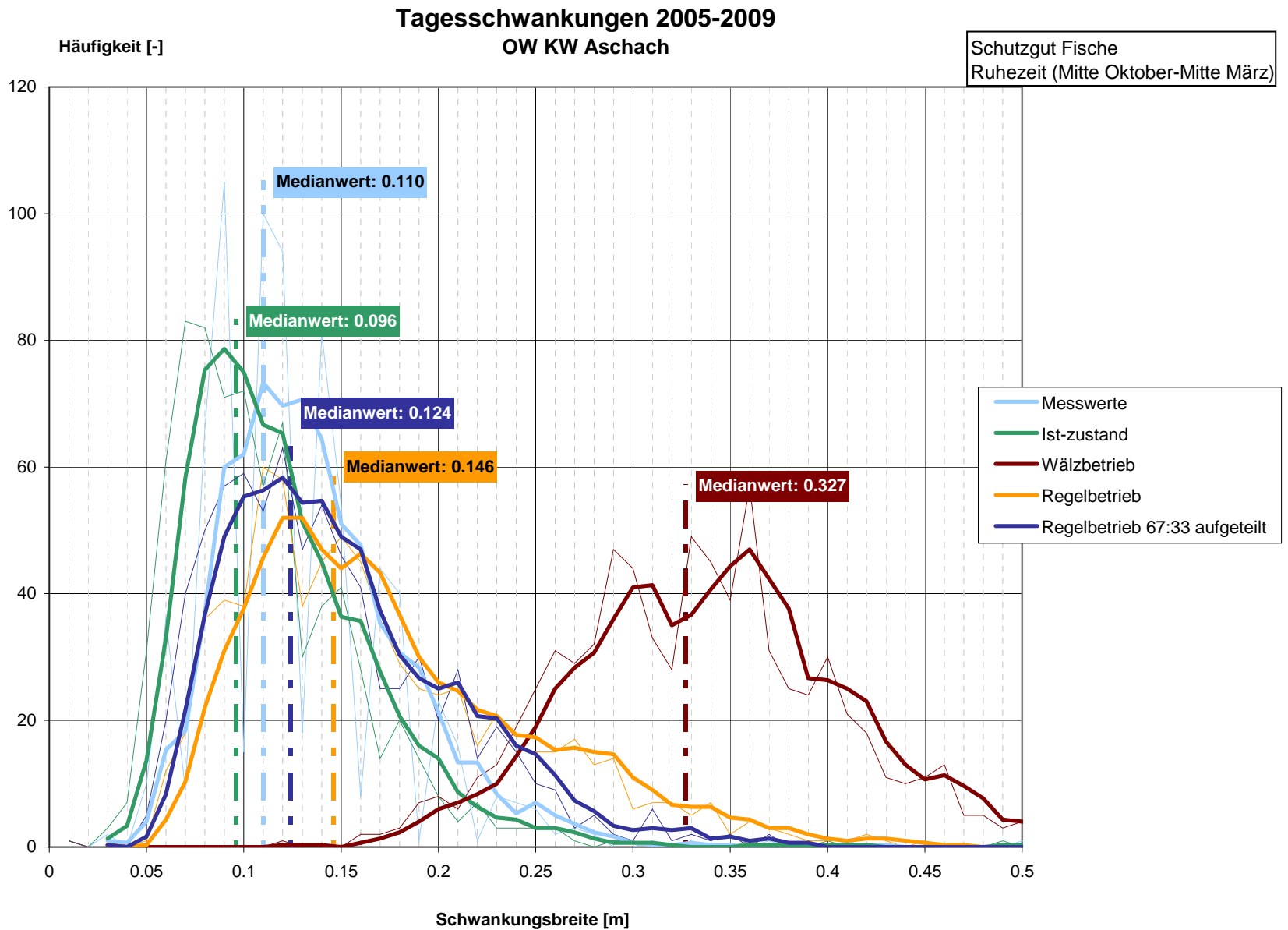


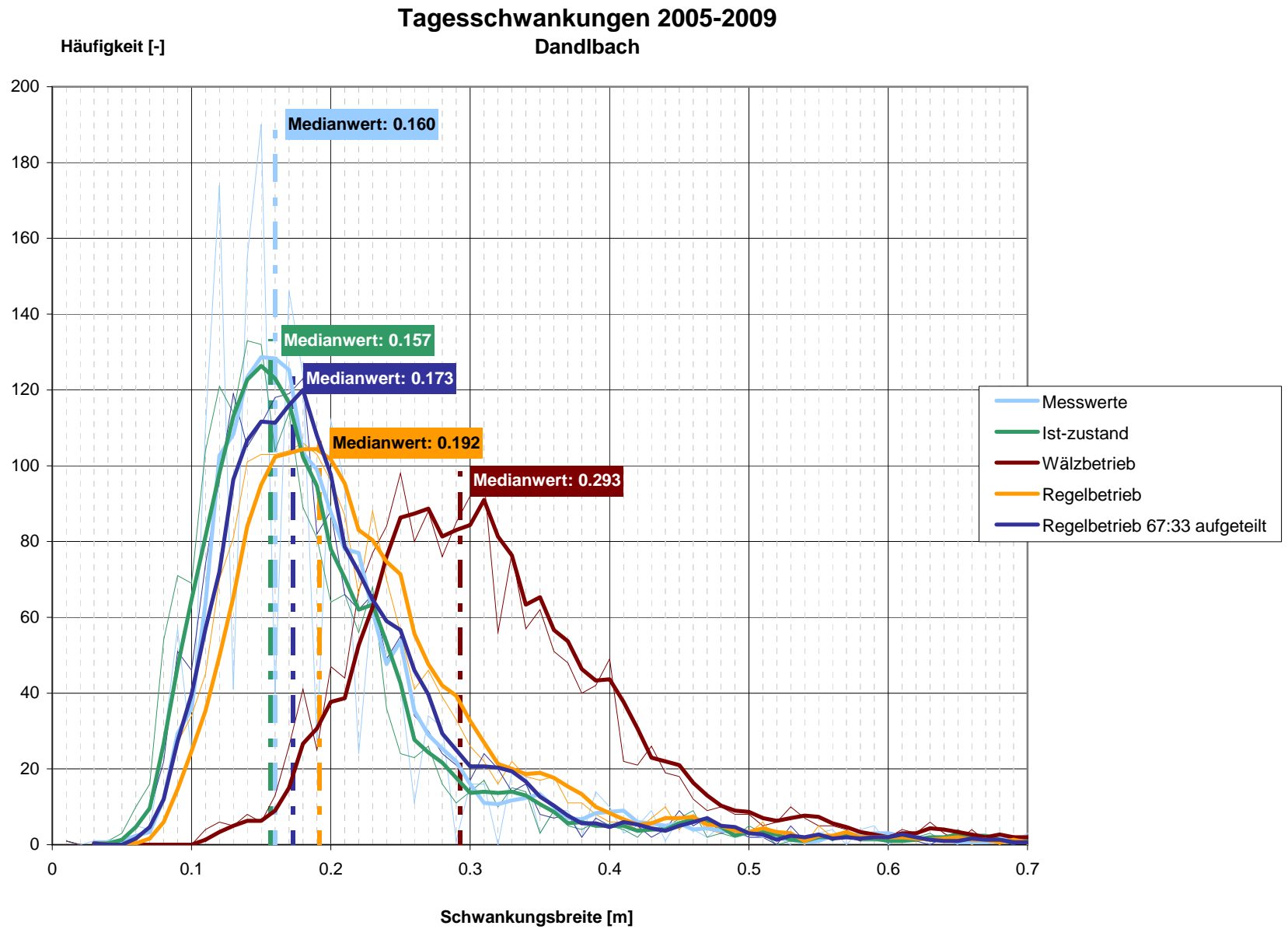


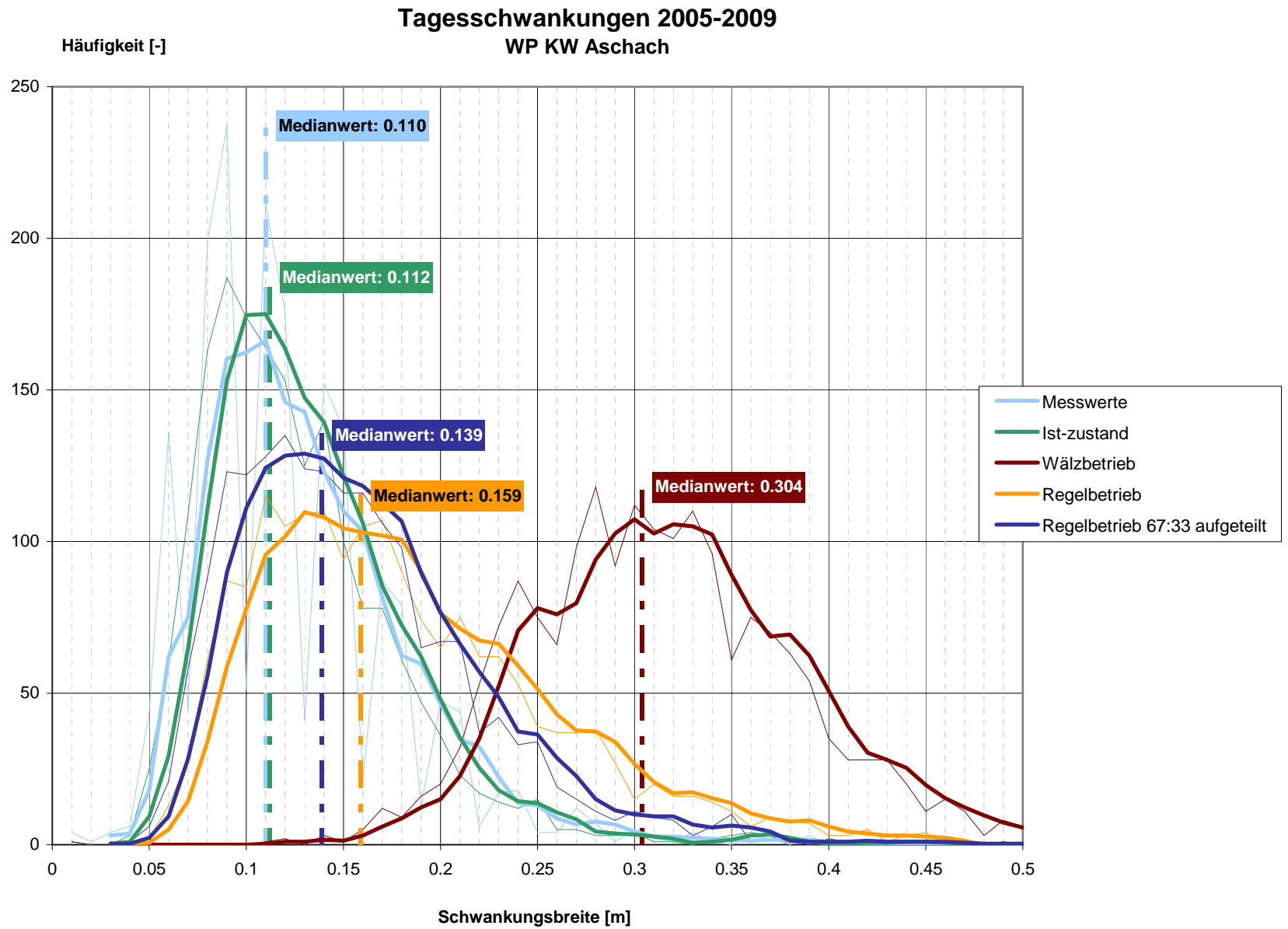












# Tagesschwankungen 2005-2009 OW KW Aschach

