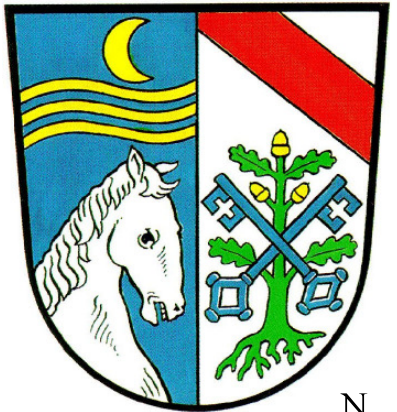
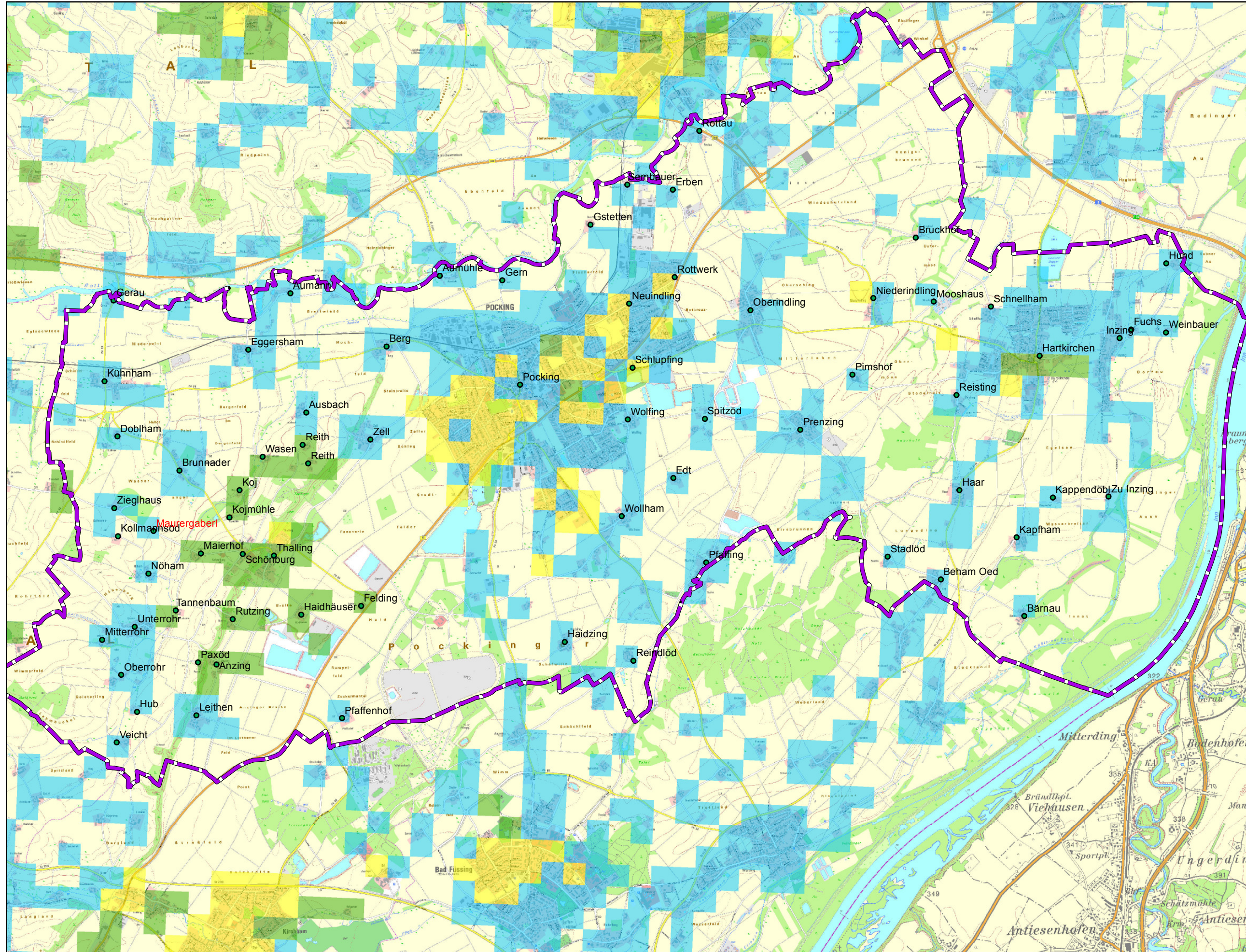







# Gemeinde Pocking



## Legende

-  vorl. Erschließungsgebiet / Gemeindegrenze
-  Ortsteile

## Versorgung

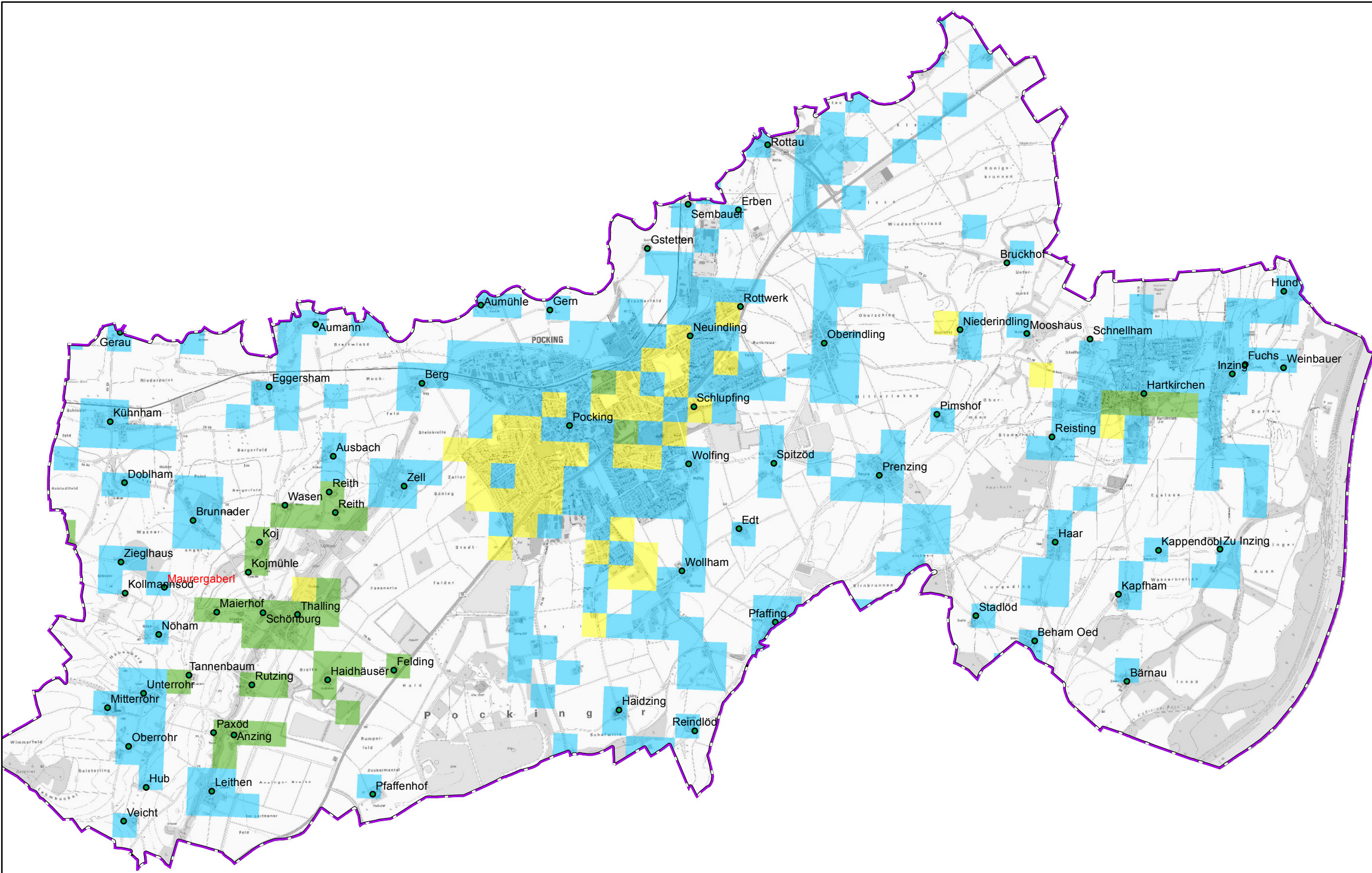
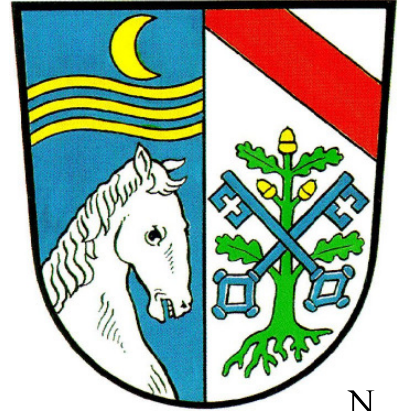
-   $\le 15 \text{ Mbit/s Down} / 1 \text{ Mbit/s Up}$
-   $16 \text{ Mbit/s Down} / 1 \text{ Mbit/s Up}$
-   $\ge 30 \text{ Mbit/s Down} / 2 \text{ Mbit/s Up}$





**LANDKREIS  
PASSAU**

Koordinierungsstelle  
Landratsamt Passau  
Domplatz 11  
94032 Passau




# Gemeinde Pocking



## Legende

-  vorl. Erschließungsgebiet / Gemeindegrenze
-  Ortsteile

## Versorgung

-   $\le 15 \text{ Mbit/s Down} / 1 \text{ Mbit/s Up}$
-   $16 \text{ Mbit/s Down} / 1 \text{ Mbit/s Up}$
-   $\ge 30 \text{ Mbit/s Down} / 2 \text{ Mbit/s Up}$



**LANDKREIS  
PASSAU**  
Koordinierungsstelle  
Landratsamt Passau  
Domplatz 11  
94032 Passau