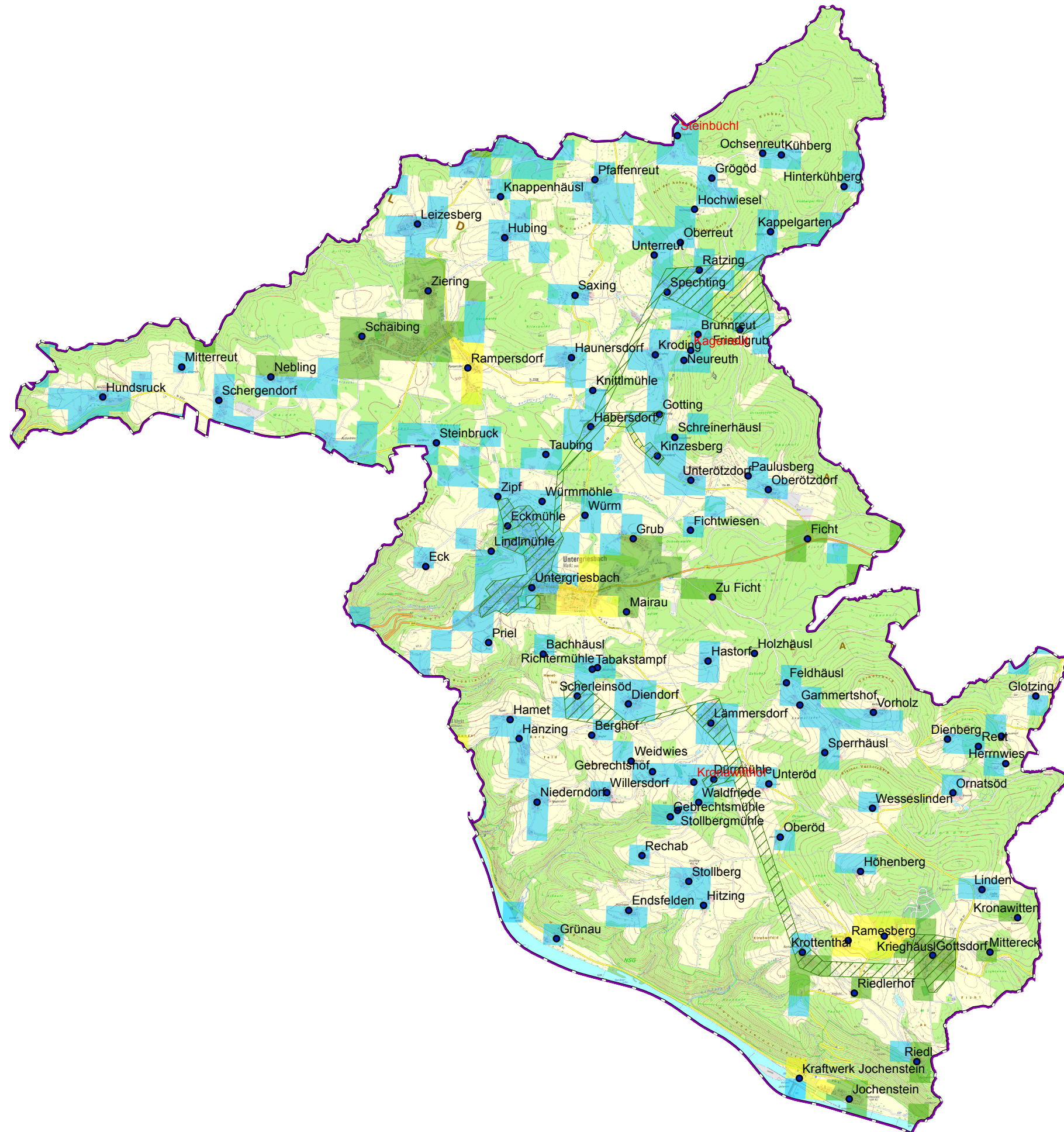
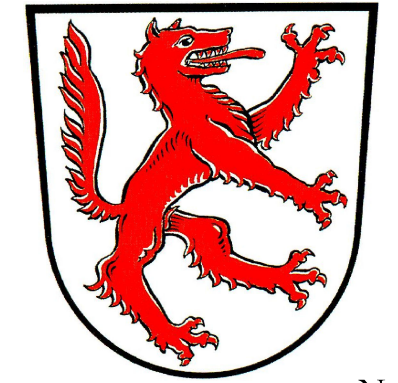






# Gemeinde Untergriesbach



## Legende

-  Ausbau gefördert oder eigenwirtschaftlich
-  vorl. Erschließungsgebiet / Gemeindegrenze
-  Ortsteile

## Versorgung

-   $\le 15 \text{ Mbit/s Down} / 1 \text{ Mbit/s Up}$
-   $16 \text{ Mbit/s Down} / 1 \text{ Mbit/s Up}$
-   $\ge 30 \text{ Mbit/s Down} / 2 \text{ Mbit/s Up}$



Koordinierungsstelle  
Landratsamt Passau  
Domplatz 11  
94032 Passau